

VOTE | Voice of the Experienced
4930 Washington Ave
New Orleans, LA 70125
504-571-9599
info@voiceoftheexperienced.org

November 15, 2022

Department of Commerce
U.S. Census Bureau
DCMD.2030.Research@census.gov

RE: Public Comments
Design Selection Phase Comments
Docket Number USBC-2022-0004

Dear Sir/Madam:

Please accept the following comments on behalf of Voice of the Experienced (VOTE) concerning the Design Selection Phase of the United States 2030 Census.

VOTE is a non-profit organization based in Louisiana, a state with one of the highest incarceration rates in the United States. VOTE is an organization founded and led by formerly incarcerated individuals working to change the system of mass incarceration. Through grassroots organizing and education, VOTE works to restore the voting rights of the formally incarcerated, advocates for improved health care inside of correctional facilities, and supports the employment and housing rights of the formally incarcerated.

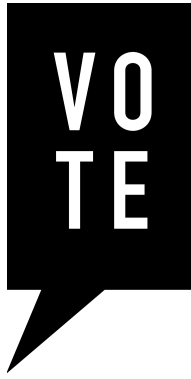
VOTE engages with individuals across Louisiana, specifically current and formerly incarcerated people and their loved ones. The organization reaches roughly 100,000 people each year. At the heart of VOTE's constituency are 34,000 people incarcerated by the state of Louisiana. They are 94% men and 67% Black.

In light of VOTE's mission and goals, the organization offers the following comments on the Design Selection Phase for the 2030 Census. VOTE has specifically structured its following comments as requested by the US Census Bureau:

A. Reaching and motivating everyone

VOTE specifically requests that the US Census Bureau and the Census of State and Federal Adult Correctional Facilities conducted by the Bureau of Justice Statistics change the manner in which it gathers data about incarcerated individuals for the US Census. The Census recognizes that it undercounts the "Black or African American population, the American Indian or Alaska Native population living on a reservation, the Hispanic or Latino population people who reported being of Some Other Race, and young children." *See* 87 Fed. Reg. 50599, 50600 (Aug. 17, 2022).

One reason that these undercounts exist is that upon information and belief, census data about those who are incarcerated is gathered by prison officials, rather than those who are actually imprisoned. It is widely understood that incarceration rates in the United States disproportionately impact people of color. *See e.g.*



VOTE | Voice of the Experienced

4930 Washington Ave

New Orleans, LA 70125

504-571-9599

info@voiceoftheexperienced.org

Leah Wang, et al., *Beyond the count: A deep dive into state prison populations*, Prison Policy Initiative (April 2022), <https://www.prisonpolicy.org/reports/beyondthecount.html>. In turn, the census data that is gathered by prison officials fails to accurately reflect demographic statistics concerning issues such as the sex and race of those behind bars.

For instance, the Louisiana Department of Corrections demographic data on race is inaccurate as it only accounts for individuals who are “black” or “white.” See e.g. <https://doc.louisiana.gov/demographic-dashboard/> (last visited Nov. 14, 2022). There are no distinctions for incarcerated residents with other ethnicities and races such as American Indian, Asian and/or Asian American, and/or Hispanic. In addition, the DOC data on sex is reflective of an incarcerated individual’s sex at birth, and thus fails to account for individuals who are transgender.

Therefore, in order to truly reach everyone, the US Census needs to adjust the way that gathers data about those who are incarcerated by allowing this country’s incarcerated population to participate in the census.

B. Technology

VOTE advocates that the US Census Bureau work with corrections departments throughout the country in order to facilitate actual individual participation in the census for those who are incarcerated. During the COVID-19 pandemic, prisons and jails throughout the country updated their technology to facilitate virtual attendance of court dates and privileged attorney-client communication. Such technology includes the widespread use of tablets, desktops and laptops. With such updates, VOTE believes that prisons have the tools to facilitate individual permit those who are incarcerated to participate electronically in the census.

In addition, census workers could coordinate with prisons and jails to gather data with those who are incarcerated via phone and/or video conference.

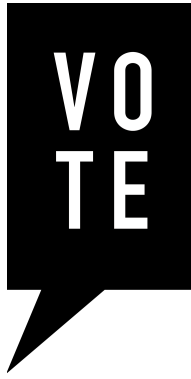
C. New data sources

VOTE understands that the US Census Bureau is using administrative data to more fully provide demographic data about the United States’ population. VOTE encourages the US Census Bureau to use this administrative data to show the socio-economic, racial, gender and geographical based impacts of incarceration on communities throughout the United States.

In addition, VOTE requests, as discussed previously, to gather data about prisoners directly from those who are incarcerated.

D. How we contact respondents

The Census Bureau is specifically interested in strategies that “focus on encouraging respondents to complete the census on their own.” See 87 Fed. Reg. 50599, 50600 (Aug. 17, 2022). As discussed



VOTE | Voice of the Experienced

4930 Washington Ave

New Orleans, LA 70125

504-571-9599

info@voiceoftheexperienced.org

throughout this comment, VOTE contends that advances in technology permit the US Census Bureau to gather census data directly from those incarcerated rather than from their respective jailers. By directly communicating with those housed in a correctional facility, the Census Bureau will be taking active steps to ensure accuracy in the data it gathers in the 2030 census.

E. Respondent support services

VOTE advocates that respondent support services include support for incarcerated respondents that are participating in the 2030 Census. Such services should include providing census workers to conduct interviews via phone and/or video conference with incarcerated respondents.

F. End the residence rule as it applies to jails and prisons

VOTE adamantly believes that the US Census Bureau needs to end its residence rule as it applies to those who are incarcerated. Specifically, VOTE contends that anyone who is incarcerated should be counted as a resident of the census block where that person lived prior to his/her incarceration. VOTE is attaching a report developed by the Redistricting Data Hub that demonstrates how incarceration changes the demographic and geographic data of Louisiana.

Should you have any questions, please do not hesitate to reach out to my office.

Sincerely,

Emily H. Posner

Staff Attorney

emily@voiceoftheexperienced.org

Louisiana Prison Gerrymandering Analysis

How prison gerrymandering affected Louisiana's 2020 redistricting

Summary

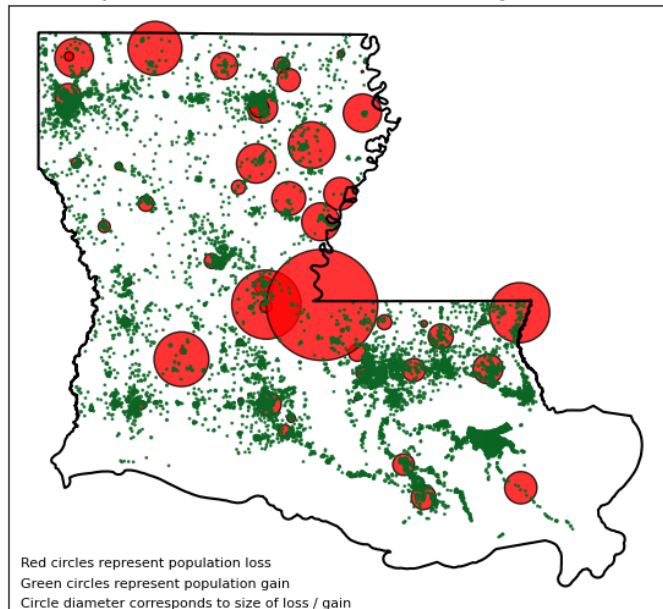
The RDH performed a counterfactual prisoner adjustment for Louisiana's census data. We received a file of 26,750 data points with prisoner addresses and addresses for places of incarceration. We were able to geocode 22,865 prisoner address and 122 prison addresses and shift the population around the state to reflect this information. In certain cases, we were either unable to determine a prison's address or the stated prison did not appear to be a physical facility. In addition, some prisoners have a valid prison address, but no valid last known address. In such cases, these prisoners are subtracted from the block containing their prison and not added back to the block containing their last known address, resulting in a net population change of -1,373 people. Some states remove federal prisoners as part of their adjustment. This step was not carried out in this analysis.

As is the case in other states, the changes in block population following prisoner adjustment are not uniform: a small number of census blocks, those containing a jail or prison, will lose all or most of their population, while a larger number of census blocks containing the last home addresses of prisoners will grow slightly. Due to the sheer number of census blocks in states, most blocks in a state are unaffected by prisoner adjustment.

In statistical terms, the block-level changes arising from adjustment are "negatively skewed": a census block containing a facility may lose several hundred people, but there likely will not be a single census block that gains several hundred people; they will instead be re-allocated across several census blocks, resulting in many blocks with small population gains. This is illustrated in the table and map below.

Population Change	Number of Blocks
Gained 100+	0
Gained 51-100	0
Gained 11-50	24
Gained 6-10	157
Gained 1-5	15,261
No Change	127,330
Lost 1-5	16
Lost 6-10	6
Lost 11-50	28
Lost 51-100	15
Lost 100+	37

Population Gains and Losses from Adjustment



Although the prisoner address data we received did not contain information about prisoner demographics, we were able to infer some of the effects of the adjustment on different demographic groups within the state by looking at the demographic figures for census blocks that gained population lost population, or were unaffected by population adjustment.

In general, census blocks that gained population following adjustment (i.e. those of a prisoners' last address) had a higher % of Black population than the rest of the state. Please note that the demographics of census blocks that lost

population (i.e. those containing prisons) reflect the demographics of their prisoners, and not the demographics of the areas surrounding the prisons. We created racial and ethnic demographic groups based on the [OMB categories](#) that are often used for redistricting purposes. See the below table with various demographic¹ data from the unadjusted 2020 PL data for more information.

Grouping	Pop. Change	Adj. Pop.	W%	B+B&W %	AS+AS &W%	AI+AI &W%	PI+PI &W%	OTH+OTH &W%	OTHM ULTI%	H%
Louisiana	-1,373	4,656,384	55.8%	32.1%	2.2%	1.6%	0.1%	0.9%	0.6%	6.9%

Demographics of Louisiana census blocks according to impact of adjustment:

Grouping	Pop. Change	Adj. Pop.	W%	B+B&W %	AS+AS &W%	AI+AI &W%	PI+PI &W%	OTH+OTH &W%	OTHM ULTI%	H%
Blocks Gaining Pop	22,865	1,596,537	45.6%	43.5%	1.7%	1.3%	0.0%	0.6%	0.4%	6.8%
Blocks Losing Pop	-24,238	1,160	40.8%	48.3%	1.3%	0.6%	0.0%	0.2%	0.1%	8.6%
Blocks Unaffected	0	3,058,687	61.1%	26.1%	2.4%	1.7%	0.1%	1.0%	0.7%	7.0%

The population shifts throughout the state would have affected Louisiana's redistricting. To meet equal population requirements, U.S. Congressional Districts are meant to be drawn with a +/- 1 person deviation, while State House and State Senate Districts generally must have a total deviation of less than 10%, where the total deviation is the sum of the largest deviating district and the smallest.

The effects of the adjustment on these three levels is described below:

¹ W% : Non-Hispanic White %
B+B&W% : Non-Hispanic Black plus Non-Hispanic Black and White %
AS+AS&W% : Non-Hispanic Asian plus Non-Hispanic Asian and White %
AI+AI&W% : Non-Hispanic American Indian plus Non-Hispanic American Indian and White %
PI+PI&W% : Non-Hispanic Pacific Islander plus Non-Hispanic Pacific Islander and White %
OTH+OTH&W% : Non-Hispanic Some Other Race plus Non-Hispanic Some Other Race and White
OTHMULTI% : Non-Hispanic Other multiple-race %
H% : Hispanic %

State House Districts (105 Total Districts)

- Original Population Deviation: 9.80%
- New Population Deviation: 12.29%
- Districts greater than 5% adjusted deviation:
 - District 3 (5.28%)
 - District 73 (5.23%)
 - District 69 (5.13%)
 - District 47 (5.11%)
 - District 31 (5.10%)
- Districts lower than -5% adjusted deviation:
 - District 28 (-7.01%)
 - District 62 (-6.62%)
 - District 20 (-6.32%)
 - District 32 (-6.23%)
 - District 21 (-6.01%)
 - District 19 (-5.61%)

State Senate Districts (39 Total Districts)

- Original Population Deviation: 9.87%
- New Population Deviation: 15.21%
- Districts greater than 5% adjusted deviation:
 - District 39 (5.69%)
 - District 22 (5.23%)
- Districts lower than -5% adjusted deviation:
 - District 32 (-9.52%)
 - District 34 (-7.53%)
 - District 28 (-6.19%)
 - District 17 (-5.64%)

U.S. Congressional Districts (6 Total Districts)

- Original Population Deviation: .01%
- New Population Deviation: 1.94%
- Largest district adjusted deviations:
 - District 5 (-1.49%)
 - District 2 (.45%)

The rest of this report details prison gerrymandering and explains in further depth how this adjustment affects Louisiana's legislative districts and other geographic units.

What is Prison Gerrymandering?

Although states have different criteria to guide the creation of new districts, all states must strive to meet the principle of “one person, one vote,” by creating districts with roughly equal populations. In the case of congressional districts, the goal is equality as “nearly as practicable,” meaning deviations as small as one person across districts. In the case of legislative districts, the goal is “substantial equality,” which has been defined as deviations of less than 10%. The equal population requirement means that counting how many people live where - data provided by the decennial census - is critically important.

In August 2021, the US Census Bureau released the 2020 Census Redistricting Data (P.L. 94-171) File for states to use in redistricting congressional and state legislative districts. In 2020, as in past decennial censuses, the Bureau counted inmates who were in jail or prison on April 1 as residing at the facility in which they are currently incarcerated.

According to the [Prison Policy Initiative](#), the population of people in jails and prison in 2020 was roughly 2.3 million. Many of these individuals are serving sentences far short of a decade. In the case of jails, most individuals are being held on pre-trial detention, and may eventually be found not guilty or given a sentence other than confinement. But because the decennial census counts these individuals as residing at the jail or prison, they will be counted toward the population of the surrounding district for the next ten years.

The problem of where incarcerated people are counted for redistricting purposes is compounded by three additional complexities:

1. Incarcerated individuals are often confined at facilities that are geographically distant from their homes.
2. Incarcerated individuals are almost never guaranteed the right vote.
3. Incarcerated individuals often have a different demographic profile from the individuals residing near the facility.

Taken together, this has the practical effect of shifting voting power away from areas and demographic populations that have high incarceration rates, and toward areas where jails and prisons are located and the demographic populations that live in those areas.

To give a simple example, imagine a state with 100 residents, and two congressional districts, A and B. If everyone can vote and no one is incarcerated, District A and B will each contain 50 individuals, and these individuals will all have equivalent voting power – that is, each individual’s vote counts toward 1/50 of the district’s electoral outcomes.

Now imagine that 10 individuals from District A are incarcerated in District B, and are not allowed to vote. District B will have to become geographically smaller to meet equal population requirements, and shift 10 non-incarcerated individuals on the margins of District B to District A. But only 40 of the 50 individuals in District B can vote. Thus, each individual’s vote in District B counts toward 1/40th of the outcome, whereas individuals’ votes in District A still count as 1/50th. This is how prison gerrymandering dilutes voting power and distorts representation.

In terms of demographics, the Voting Rights Act prevents minority vote dilution in redistricting, which requires knowing the race and ethnicity of the population, in addition to where individuals live. To the extent that individuals are counted as living at a jail or prison rather than at their home address, distortions in equal population may also distort minority representation.

Fortunately, 13 states have decided to reallocate at least some incarcerated individuals to their last known in-state home address for congressional and/or legislative redistricting in 2021. There is a great deal of variation in how this reallocation is accomplished. Nonetheless, all methods attempt to rectify the problem of prison gerrymandering.

Prison Gerrymandering in Louisiana

Louisiana is one of the 37 states that, as of November 2022, does not adjust its official census data for redistricting to combat prison gerrymandering.

The RDH was contacted by [Voice of the Experienced \(VOTE\)](#) and [Voters Organized to Educate](#) to analyze the impact prison gerrymandering reform would have had on Louisiana’s 2020 redistricting cycle.

According to the 2020 PL data, there are 51,241 adults in correctional facilities in Louisiana. To give some context to that number, the “target populations” for the various statewide districts in Louisiana are as follows:

- State House: 44,360 people
- State Senate: 119,430 people
- Congress: 776,293 people

Prison gerrymandering reform would likely involve at least three steps:

1. Geocode prisoners' last known addresses to census blocks
2. Add population to the geocoded census blocks
3. Subtract population away from the facilities where prisoners with valid addresses are being held

We received a “2022 Prisoner List” file that VOTE and Voters Organized to Educate obtained from Louisiana’s Department of Corrections. The file contains 26,750 prisoner addresses, as well as the address for the jail or prison at which prisoners are being held. This data does not include pre-trial data from parish jails or federal prison data. As a result, this dataset does not capture the entirety of the incarcerated population in Louisiana.

Of these 26,750 addresses, there are 3,885 that are out of state, prisoners with home addresses at another facility, or are incomplete and cannot be properly geocoded at this time. For the other 22,865 addresses, we were able to geocode the address to a particular census block (step #1 above). As part of prison gerrymandering reform, these census blocks would gain population (step #2 above). To better understand the effects of these changes, our analysis aggregates these increases in population to a variety of different geographic levels: Congress, State House, State Senate, Parish, Zip Code Tabulation Area, and Census Place.

Methodology

For the purposes of geocoding, only columns 1, 5, 9, 10, 11, 12 are needed. They are renamed as the following below:

Column 1	DOC_NUM (Dept of Corrections ID)
Column 5	FACILITY (Facility for incarcerated person)
Column 9	ADDRESS (Street address of incarcerated person address)
Column 10	CITY (City of incarcerated person home address)
Column 11	STATE (State of incarcerated person home address)
Column 12	ZIP (Zip of incarcerated person home address)

Processing was completed using the pandas, json, and requests libraries in Python. Address file was read in as a pandas dataframe. A complete address field was made by combining the ADDRESS, CITY, STATE, and ZIP fields. Some addresses were removed from the file prior to attempting to geocode due to incomplete addresses, non-physical facilities, out of state addresses, PO Boxes, addresses at other DOC facilities, amongst others.

The addresses were reformatted into URLs for the Census geocoding API using 2020 the benchmark and the vintage as Census2020_Census2020 with return type geographies. Remaining addresses which we were unable to geocode using the Census API were geocoded to latitude and longitude using the Google API, and then a spatial join with a block shapefile to retrieve block GEOIDs.

Using the methods above we attempted to retrieve 2020 Block GEOIDs from a matched address. Of the 26,750 total addresses in the file:

- 22,865 (85.5%) were successfully geocoded
- 3,885 (15.0%) are invalid addresses we were unable to geocode:
 - 1,071 (4.0%) are out-of-state
 - 262 (1.0%) are non-physical facility addresses (facilities starting with OAS)
 - 221 (.8%) are addresses for prisons/other facilities
 - 1,966 (7.4%) contain no data at all for a street address
 - 329 (1.2%) are invalid addresses (ex. PO Box, unknown, to be secured, homeless, etc.)
 - 11 (0.04%) are invalid addresses of only 0s for street number
 - 18 (0.1%) contain no city
 - 7 (0.03%) assorted errors

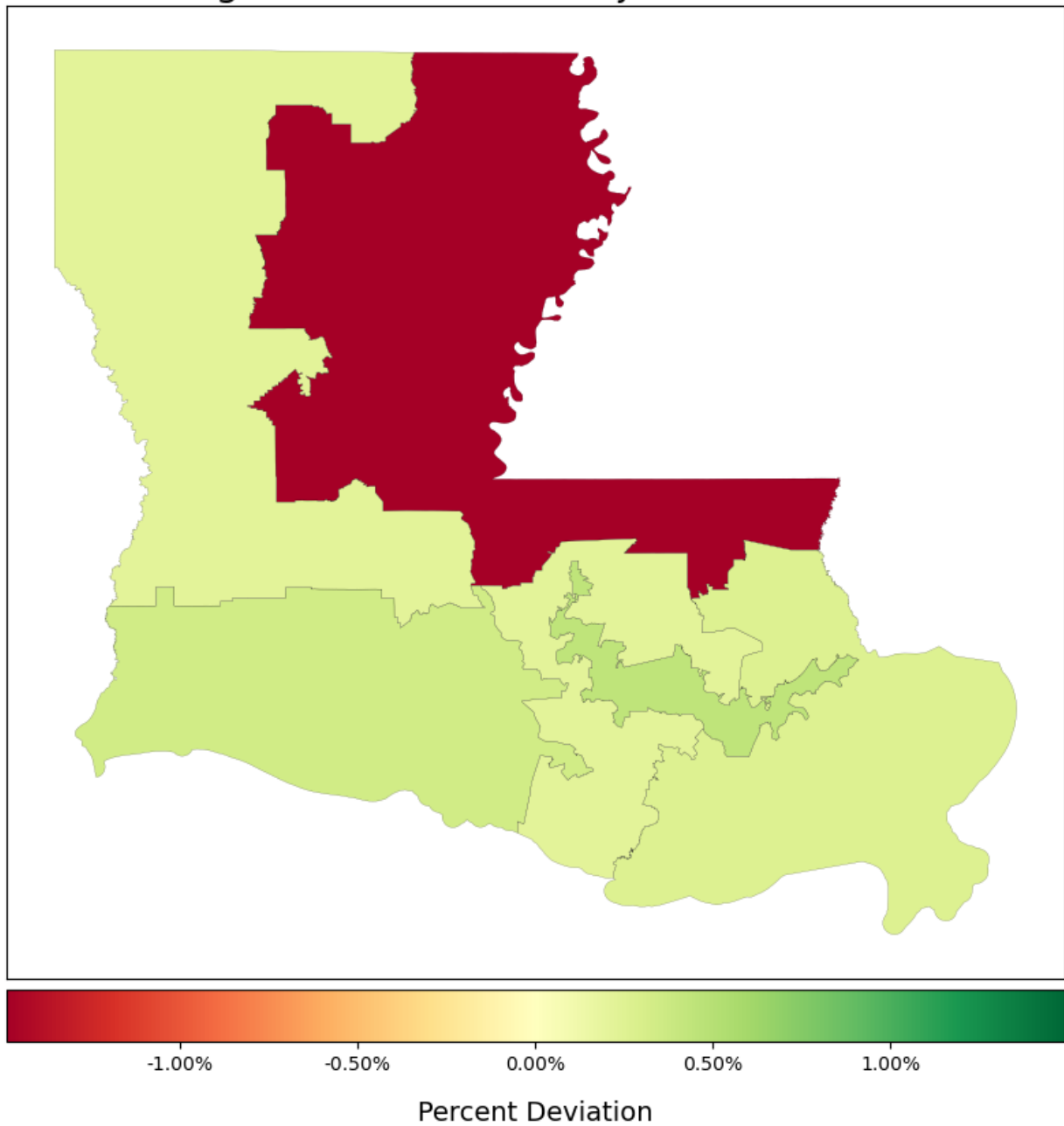
To create a block-level file, addresses which had a block successfully matched were queried out. A field was added to the block file with a count of how many people were assigned to that block, which is what was used in the creation of the reports.

The Effects of Prisoner Adjustment

As the dataset is adjusted to count prisoners at their last home address, census blocks containing jails or prisons lose population and census blocks containing those last addresses gain population.

Congressional District

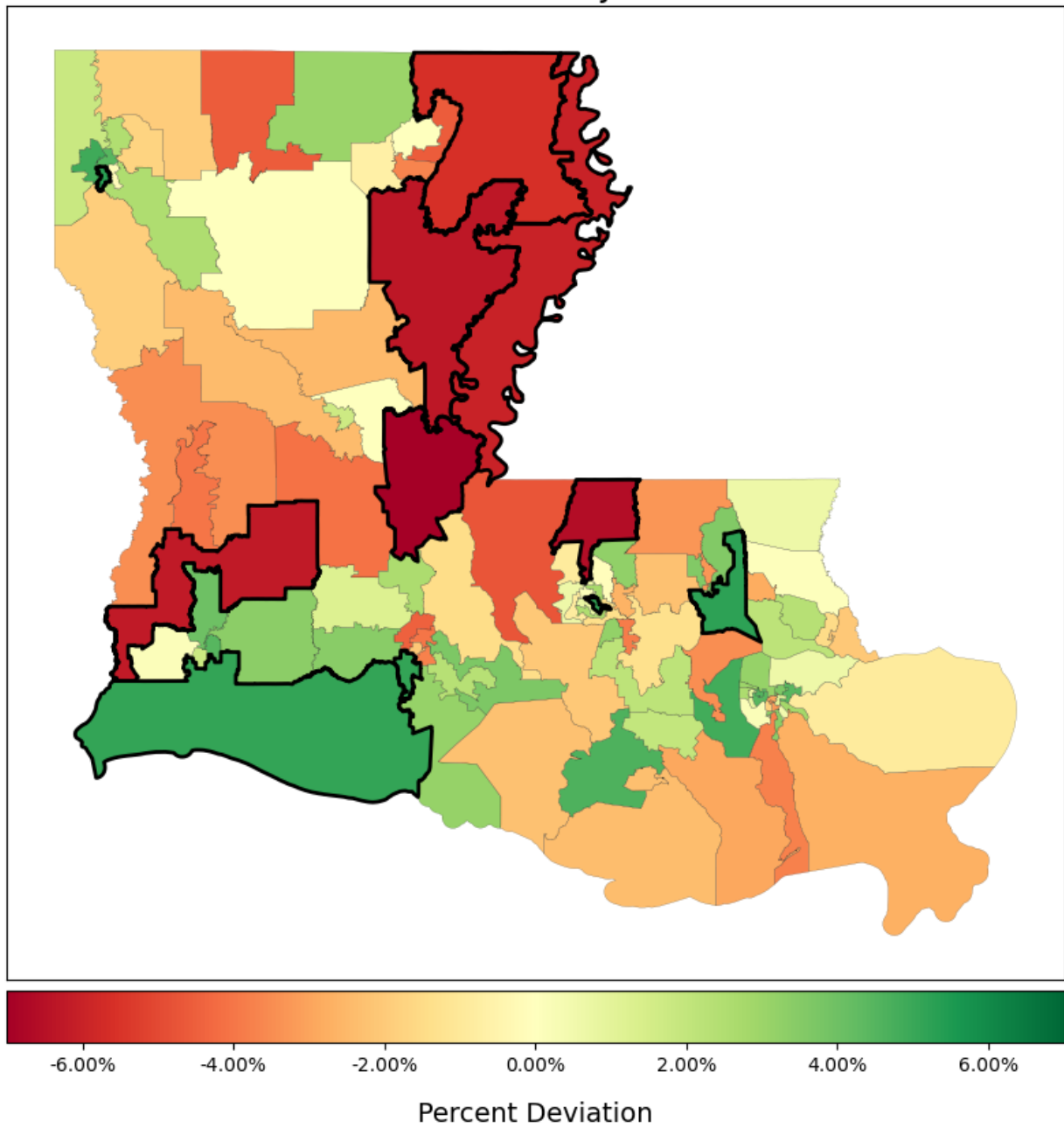
Congressional District Adjusted Deviation



State House District

Districts with a population deviation greater than 5% or lower than -5% are outlined in black.

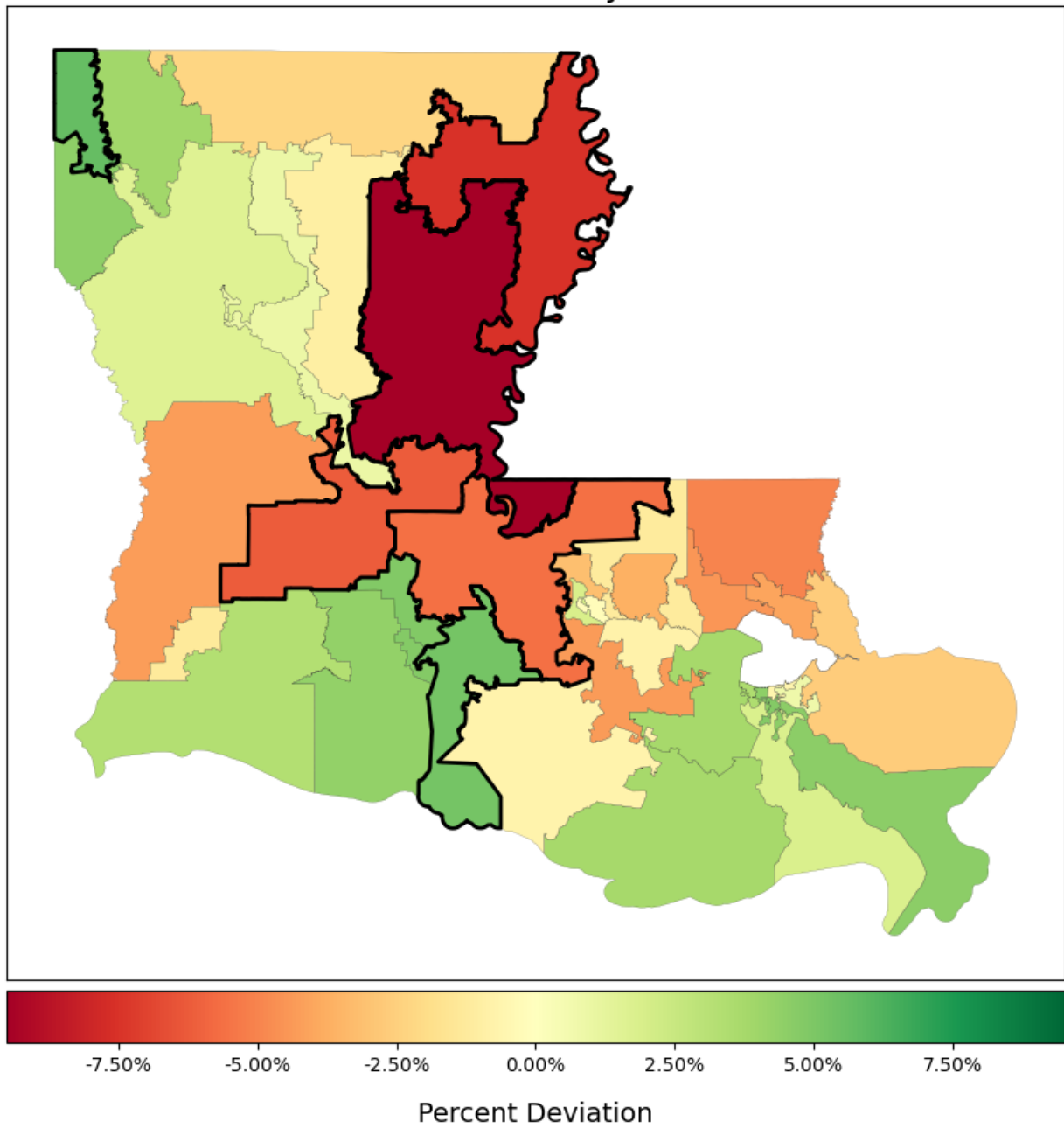
State House District Adjusted Deviation



State Senate District

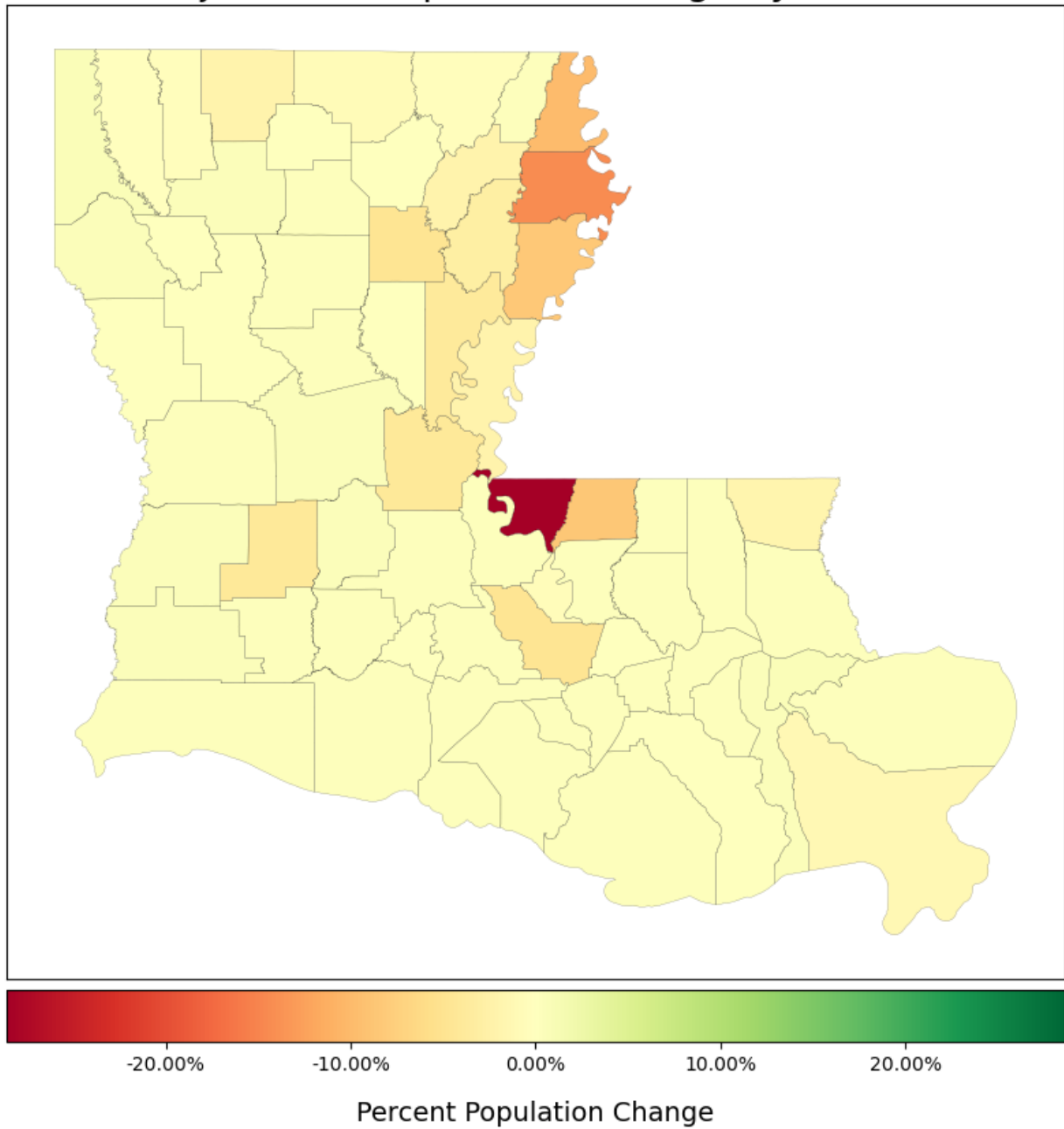
Districts with a population deviation greater than 5% or lower than -5% are outlined in black.

State Senate District Adjusted Deviation



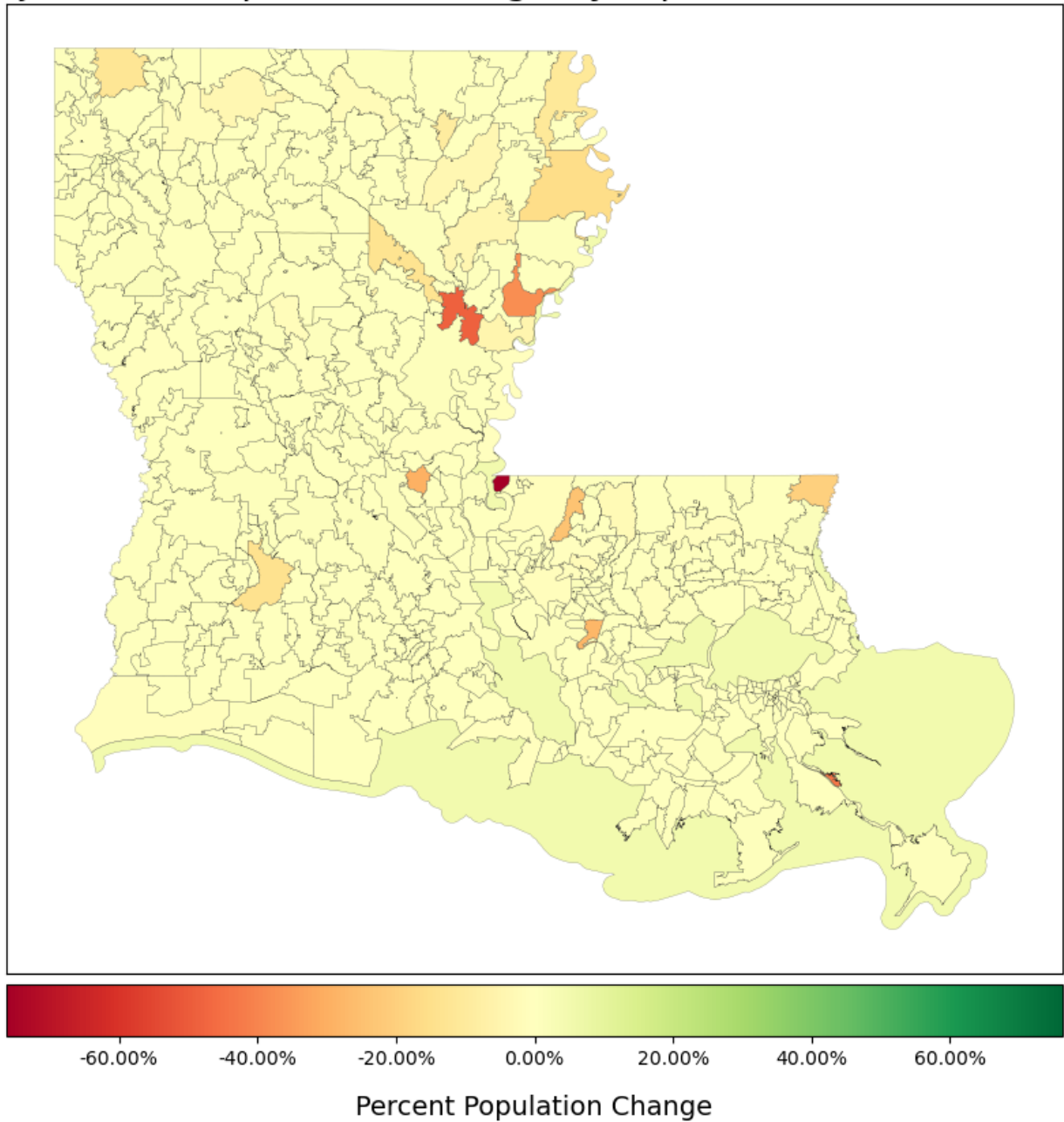
Parish

Adjusted % Population Change by Parish



Zip Code Tabulation Area

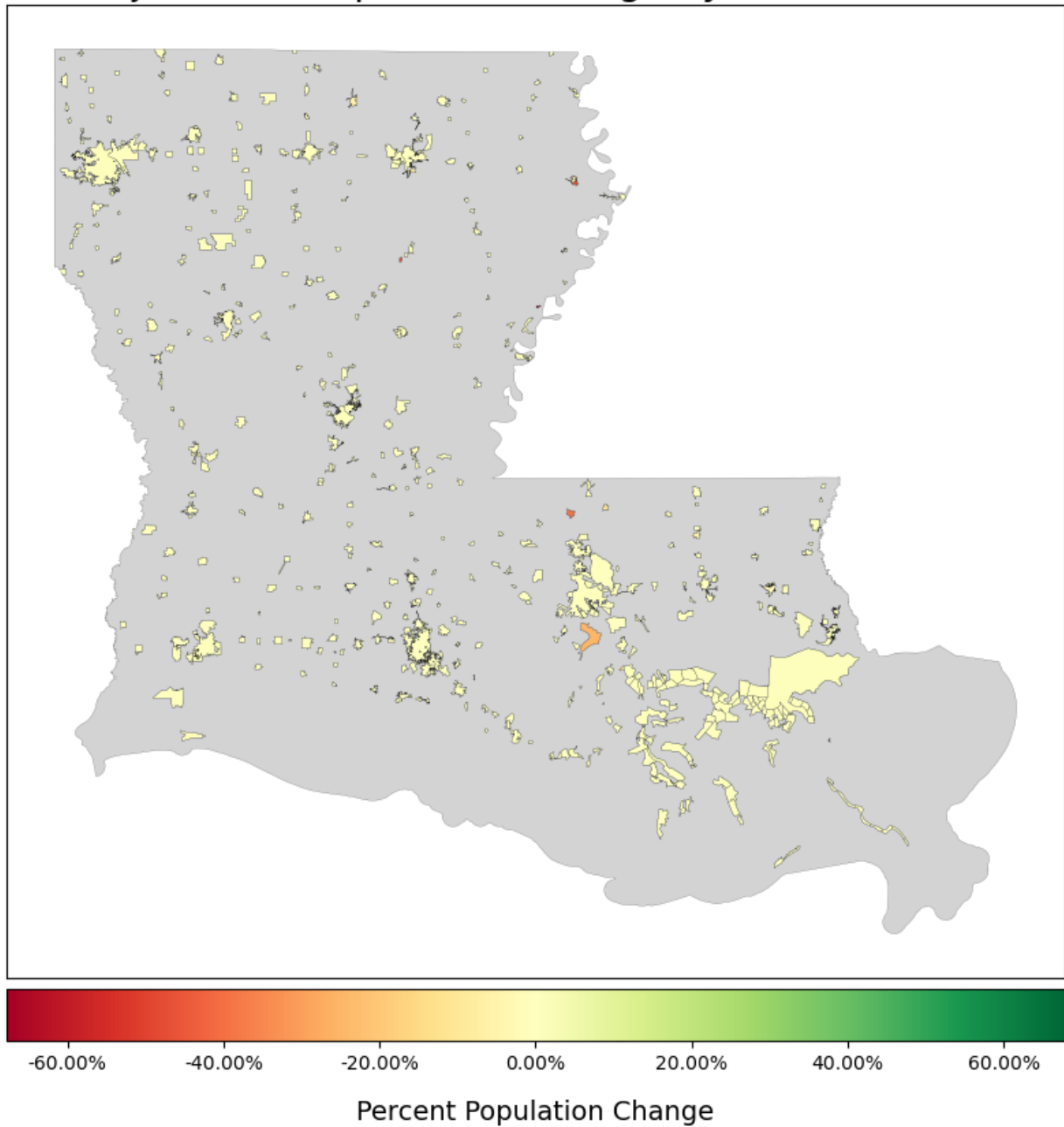
Adjusted % Population Change by Zip Code Tabulation Area



Census Place

Note: Areas in grey do not correspond to a census place.

Adjusted % Population Change by Census Place



Appendix: Data Tables

Please note the following definitions used in the data tables:

- W% : Non-Hispanic White %
- B+B&W% : Non-Hispanic Black plus Non-Hispanic Black and White %
- AS+AS&W% : Non-Hispanic Asian plus Non-Hispanic Asian and White %
- AI+AI&W% : Non-Hispanic American Indian plus Non-Hispanic American Indian and White %
- PI+PI&W% : Non-Hispanic Pacific Islander plus Non-Hispanic Pacific Islander and White %
- OTH+OTH&W% : Non-Hispanic Some Other Race plus Non-Hispanic Some Other Race and White
- OTHMULTI% : Non-Hispanic Other multiple-race %
- H% : Hispanic %

The tables for Congressional, State House, and State Senate districts are sorted by the largest deviation, either positive or negative. The other tables are sorted by the largest percentage change in population, either positive or negative.

Congressional District

Cong. District	Pop. Change	Adj. Pop.	Unadj. Dev.	Adj. Dev.	W%	B+B& W%	AS+A S&W %	AI+AI &W%	PI+PI &W%	OTH +OT H&W %	OTH MULT I%	H%
5	-11,759	764,518	-0.00%	-1.49%	57.9%	34.4%	1.1%	1.5%	0.0%	0.7%	0.5%	3.8%
2	3,217	779,534	+0.00%	+0.45%	27.1%	59.1%	2.9%	0.7%	0.0%	0.8%	0.8%	8.7%
3	2,446	778,721	-0.00%	+0.34%	64.4%	25.7%	2.0%	1.2%	0.1%	0.8%	0.6%	5.3%
1	1,832	778,100	-0.00%	+0.26%	67.0%	13.7%	2.9%	2.4%	0.1%	1.2%	0.6%	12.0%
6	1,519	777,806	-0.00%	+0.22%	62.4%	24.7%	2.7%	1.5%	0.0%	0.9%	0.5%	7.2%
4	1,372	777,705	+0.01%	+0.21%	55.7%	34.9%	1.3%	2.0%	0.1%	0.8%	0.6%	4.5%

State House District

State House District	Pop. Change	Adj. Pop.	Unadj. Dev.	Adj. Dev.	W%	B+B&W%	AS+A S&W %	AI+AI &W%	PI+PI &W%	OTH +OT H&W %	OTH MULT I%	H%
28	-1,614	41,237	-3.40%	-7.01%	64.3%	28.1%	1.0%	1.7%	0.0%	0.6%	0.7%	3.6%
62	-1,559	41,410	-3.13%	-6.62%	38.6%	57.0%	0.4%	0.9%	0.0%	0.5%	0.6%	2.0%
20	-661	41,543	-4.86%	-6.32%	77.6%	16.5%	0.3%	1.7%	0.1%	0.6%	0.3%	2.9%
32	-827	41,582	-4.40%	-6.23%	75.4%	14.0%	0.7%	3.3%	0.1%	0.7%	0.5%	5.5%
21	-2,647	41,682	-0.07%	-6.01%	39.1%	57.0%	0.4%	0.7%	0.0%	0.3%	0.4%	1.9%
19	-1,323	41,860	-2.65%	-5.61%	66.3%	28.7%	0.4%	1.4%	0.0%	0.5%	0.4%	2.3%
3	567	46,689	+3.97%	+5.28%	18.8%	75.6%	0.8%	0.7%	0.0%	0.5%	0.8%	2.8%
73	161	46,664	+4.83%	+5.23%	73.8%	16.3%	1.0%	2.0%	0.1%	1.2%	0.4%	5.3%
69	72	46,622	+4.94%	+5.13%	58.0%	25.1%	5.4%	0.9%	0.0%	1.1%	0.6%	8.9%
47	131	46,611	+4.78%	+5.11%	79.2%	12.7%	1.9%	1.0%	0.1%	0.7%	0.3%	4.1%
31	99	46,609	+4.85%	+5.10%	68.7%	18.1%	4.8%	1.1%	0.0%	0.9%	0.4%	6.0%
4	116	46,521	+4.61%	+4.90%	20.4%	74.2%	0.6%	0.8%	0.0%	0.6%	0.7%	2.6%
56	141	46,502	+4.51%	+4.86%	66.3%	20.9%	1.5%	1.5%	0.0%	0.9%	0.5%	8.4%
18	-4,245	42,249	+4.81%	-4.73%	61.7%	31.9%	0.4%	1.0%	0.0%	0.7%	0.5%	3.7%
51	79	46,398	+4.42%	+4.63%	60.9%	22.9%	1.7%	3.8%	0.0%	0.8%	0.6%	9.4%
11	-144	42,314	-4.29%	-4.58%	36.2%	57.9%	1.0%	1.0%	0.0%	0.4%	0.5%	3.0%
16	-10	42,318	-4.58%	-4.57%	29.6%	65.2%	1.3%	0.9%	0.0%	0.4%	0.6%	2.0%
80	112	46,361	+4.26%	+4.54%	57.5%	14.7%	4.4%	0.8%	0.0%	1.3%	0.6%	20.6%
34	457	46,336	+3.43%	+4.49%	18.9%	72.9%	1.0%	0.6%	0.1%	0.8%	1.4%	4.3%
2	695	46,337	+2.89%	+4.49%	21.6%	68.5%	1.2%	1.0%	0.1%	0.6%	1.1%	6.0%
39	107	42,369	-4.73%	-4.46%	58.4%	30.5%	1.1%	1.0%	0.0%	0.8%	0.6%	7.5%
99	403	46,325	+3.52%	+4.46%	13.0%	79.2%	0.8%	0.4%	0.0%	0.8%	0.9%	4.9%
82	117	46,319	+4.15%	+4.45%	70.3%	11.3%	3.1%	1.1%	0.0%	1.4%	0.5%	12.3%
38	220	42,529	-4.62%	-4.10%	67.2%	24.1%	0.8%	1.6%	0.0%	0.6%	0.4%	5.3%
30	238	42,551	-4.61%	-4.05%	65.0%	20.3%	2.5%	2.6%	0.4%	1.1%	0.9%	7.2%
44	59	42,565	-4.18%	-4.02%	30.5%	61.3%	1.0%	0.6%	0.0%	0.6%	0.8%	5.2%
35	149	46,124	+3.64%	+4.01%	78.4%	12.7%	1.2%	1.7%	0.0%	0.9%	0.5%	4.6%
88	83	42,625	-4.10%	-3.88%	73.0%	14.4%	1.2%	1.4%	0.0%	0.8%	0.3%	8.9%
43	56	42,686	-3.90%	-3.74%	72.1%	15.3%	3.2%	1.2%	0.0%	0.9%	0.6%	6.6%
84	172	42,692	-4.15%	-3.73%	57.3%	20.6%	6.3%	2.3%	0.1%	1.1%	0.5%	11.9%
97	280	45,993	+3.05%	+3.71%	18.9%	70.7%	1.7%	0.5%	0.0%	1.1%	1.4%	5.8%
17	-106	42,701	-3.50%	-3.71%	24.9%	66.6%	1.0%	0.7%	0.1%	0.5%	0.8%	5.5%
96	273	45,979	+3.04%	+3.68%	36.0%	57.1%	1.8%	0.6%	0.0%	0.5%	0.6%	3.2%
86	191	45,927	+3.10%	+3.56%	63.5%	25.9%	1.4%	1.6%	0.0%	0.7%	0.4%	6.4%
24	110	42,802	-3.76%	-3.48%	77.2%	10.6%	1.3%	3.4%	0.5%	0.9%	0.6%	5.6%
57	109	42,806	-3.75%	-3.47%	30.3%	58.9%	1.0%	0.8%	0.0%	0.6%	0.6%	7.7%
42	208	45,870	+2.94%	+3.44%	74.2%	20.0%	0.5%	1.0%	0.0%	0.5%	0.3%	3.4%
37	178	45,850	+2.96%	+3.39%	75.4%	18.4%	0.6%	1.4%	0.1%	0.7%	0.7%	2.8%
87	294	45,832	+2.66%	+3.35%	19.5%	58.7%	7.5%	0.6%	0.0%	0.7%	0.8%	12.2%
72	63	42,880	-3.48%	-3.31%	39.4%	54.8%	0.4%	0.9%	0.0%	0.6%	0.5%	3.3%

State House District	Pop. Change	Adj. Pop.	Unadj. Dev.	Adj. Dev.	W%	B+B&W%	AS+A S&W %	AI+AI &W%	PI+PI &W%	OTH +OT H&W %	OTH MULT I%	H%
91	393	42,901	-4.17%	-3.26%	44.5%	40.9%	2.5%	0.9%	0.0%	1.1%	1.0%	9.0%
64	168	45,787	+2.84%	+3.25%	83.3%	7.0%	0.8%	2.2%	0.1%	1.1%	0.2%	5.3%
59	77	45,776	+3.02%	+3.22%	67.0%	18.6%	3.1%	1.2%	0.1%	0.9%	0.5%	8.6%
94	67	45,752	+2.99%	+3.17%	68.7%	8.5%	5.1%	0.8%	0.0%	1.3%	0.6%	15.0%
49	78	45,748	+2.95%	+3.16%	78.1%	10.8%	2.4%	1.3%	0.0%	0.6%	0.4%	6.4%
12	-205	45,684	+3.45%	+3.02%	71.9%	19.5%	1.3%	1.5%	0.1%	0.6%	0.3%	4.8%
23	319	43,027	-3.72%	-2.98%	32.6%	50.2%	1.8%	0.7%	0.0%	1.0%	1.0%	12.6%
79	85	45,664	+2.75%	+2.97%	55.4%	11.9%	7.4%	0.8%	0.0%	1.3%	0.5%	22.7%
54	194	43,043	-3.41%	-2.94%	80.3%	3.7%	1.1%	6.5%	0.0%	0.5%	0.4%	7.6%
102	343	45,607	+2.04%	+2.84%	20.6%	66.3%	2.6%	0.6%	0.1%	0.8%	0.9%	8.1%
77	-195	43,096	-2.41%	-2.82%	78.6%	8.4%	1.7%	1.5%	0.1%	1.5%	0.4%	7.8%
101	216	45,562	+2.22%	+2.74%	20.4%	61.8%	5.6%	0.5%	0.0%	0.5%	0.8%	10.3%
105	-218	43,148	-2.24%	-2.70%	44.6%	35.0%	6.9%	1.6%	0.1%	1.3%	0.9%	9.5%
71	167	43,168	-3.06%	-2.66%	74.4%	12.4%	1.7%	1.7%	0.1%	1.1%	0.3%	8.3%
92	332	45,508	+1.84%	+2.62%	35.7%	29.2%	3.3%	0.8%	0.0%	1.1%	0.5%	29.3%
40	199	45,495	+2.11%	+2.59%	39.3%	56.1%	0.6%	0.6%	0.0%	0.6%	0.8%	2.1%
5	107	45,482	+2.29%	+2.56%	67.2%	20.4%	3.3%	2.0%	0.1%	0.9%	0.7%	5.4%
70	64	45,462	+2.34%	+2.52%	61.9%	21.6%	6.1%	1.2%	0.0%	1.0%	0.6%	7.5%
22	1	43,239	-2.53%	-2.50%	62.3%	25.0%	1.1%	2.1%	0.1%	0.8%	0.6%	7.9%
8	116	45,441	+2.18%	+2.47%	65.9%	20.8%	3.4%	1.8%	0.1%	0.9%	0.6%	6.4%
25	139	43,275	-2.76%	-2.42%	65.8%	24.5%	2.3%	2.3%	0.0%	1.2%	0.6%	3.3%
53	125	43,285	-2.70%	-2.39%	58.3%	21.1%	1.3%	10.9%	0.1%	0.5%	1.0%	6.9%
48	42	45,381	+2.21%	+2.33%	70.2%	18.5%	3.5%	1.0%	0.1%	0.8%	0.5%	5.4%
104	184	45,381	+1.89%	+2.33%	70.9%	14.0%	1.8%	2.0%	0.1%	1.6%	0.9%	8.7%
52	161	43,324	-2.70%	-2.31%	69.1%	15.6%	2.0%	5.4%	0.1%	0.6%	0.8%	6.5%
50	145	43,335	-2.64%	-2.28%	55.0%	33.0%	0.8%	3.3%	0.1%	0.7%	0.6%	6.5%
95	1	43,338	-2.31%	-2.27%	76.3%	14.7%	0.6%	1.7%	0.1%	1.1%	0.3%	5.2%
89	82	45,300	+1.94%	+2.15%	82.9%	3.8%	2.4%	1.4%	0.1%	1.3%	0.3%	7.8%
58	102	45,296	+1.88%	+2.14%	34.3%	58.4%	0.4%	0.5%	0.0%	0.5%	0.6%	5.2%
45	40	43,412	-2.23%	-2.11%	71.0%	15.2%	3.2%	1.2%	0.1%	1.0%	0.5%	7.8%
76	198	43,426	-2.55%	-2.08%	58.2%	27.6%	3.0%	1.6%	0.1%	1.2%	0.9%	7.5%
60	-1,429	43,435	+1.14%	-2.06%	54.3%	39.4%	0.5%	0.8%	0.0%	0.4%	0.3%	4.3%
55	116	45,240	+1.72%	+2.01%	67.1%	25.5%	0.8%	1.6%	0.0%	0.5%	0.4%	4.1%
10	-660	43,477	-0.50%	-1.96%	61.3%	33.4%	0.5%	1.8%	0.0%	0.7%	0.3%	2.0%
7	231	43,510	-2.44%	-1.89%	58.3%	30.0%	0.4%	6.7%	0.0%	0.8%	0.6%	3.2%
1	227	45,168	+1.31%	+1.85%	67.1%	23.8%	0.7%	2.6%	0.1%	1.2%	0.5%	4.1%
98	106	43,537	-2.09%	-1.83%	67.8%	13.8%	3.6%	0.9%	0.1%	1.2%	0.6%	12.0%
36	71	45,133	+1.58%	+1.77%	69.0%	15.9%	5.2%	1.2%	0.2%	1.0%	0.6%	6.9%
9	178	43,579	-2.16%	-1.73%	62.2%	21.7%	1.8%	2.5%	0.2%	1.1%	0.7%	9.7%
26	463	45,099	+0.62%	+1.70%	26.5%	66.6%	1.4%	0.9%	0.1%	0.6%	0.9%	3.1%
90	238	43,689	-2.05%	-1.48%	63.3%	21.9%	2.2%	1.9%	0.1%	1.5%	0.9%	8.2%
46	116	43,712	-1.72%	-1.43%	71.6%	22.6%	0.8%	0.9%	0.0%	0.6%	0.4%	3.0%

State House District	Pop. Change	Adj. Pop.	Unadj. Dev.	Adj. Dev.	W%	B+B&W%	AS+A S&W %	AI+AI &W%	PI+PI &W%	OTH +OT H&W %	OTH MULT I%	H%
66	34	43,737	-1.48%	-1.37%	66.3%	19.7%	5.7%	1.0%	0.1%	0.9%	0.5%	5.9%
81	115	43,747	-1.64%	-1.35%	78.3%	12.8%	1.0%	1.5%	0.1%	1.0%	0.3%	5.0%
41	143	44,887	+0.87%	+1.22%	71.8%	21.1%	0.6%	0.9%	0.0%	0.5%	0.5%	4.6%
93	549	44,773	-0.31%	+0.96%	30.1%	58.5%	2.1%	0.9%	0.1%	1.1%	1.1%	6.2%
103	178	43,942	-1.34%	-0.91%	52.9%	27.0%	2.9%	1.5%	0.0%	1.4%	0.6%	13.7%
63	-682	43,956	+0.63%	-0.88%	25.6%	69.3%	0.8%	0.6%	0.0%	0.6%	0.5%	2.6%
67	409	43,975	-1.79%	-0.84%	30.1%	53.5%	4.0%	0.6%	0.1%	0.6%	0.8%	10.2%
78	124	44,708	+0.51%	+0.82%	66.7%	9.2%	2.9%	1.2%	0.0%	1.3%	0.4%	18.1%
68	61	44,668	+0.56%	+0.72%	67.0%	20.6%	4.1%	0.9%	0.0%	0.9%	0.6%	5.9%
15	111	44,045	-0.96%	-0.68%	84.6%	6.7%	1.5%	2.5%	0.0%	1.1%	0.3%	3.3%
29	91	44,635	+0.42%	+0.65%	20.9%	73.9%	0.6%	0.4%	0.1%	0.3%	0.6%	3.1%
100	269	44,629	+0.00%	+0.64%	3.4%	78.8%	10.0%	0.2%	0.0%	0.5%	1.0%	6.1%
75	-841	44,622	+2.49%	+0.62%	65.1%	28.9%	0.4%	1.4%	0.0%	0.7%	0.3%	3.1%
85	254	44,557	-0.13%	+0.47%	33.9%	34.8%	4.4%	0.9%	0.1%	0.9%	0.8%	24.2%
83	480	44,436	-0.91%	+0.20%	28.3%	55.7%	3.1%	1.0%	0.0%	0.7%	0.7%	10.4%
6	100	44,274	-0.42%	-0.16%	71.2%	17.5%	3.7%	1.7%	0.2%	0.9%	0.6%	4.2%
61	367	44,416	-0.70%	+0.16%	15.9%	76.7%	1.0%	0.5%	0.0%	0.4%	0.7%	4.8%
33	170	44,413	-0.26%	+0.15%	81.0%	8.4%	1.4%	1.8%	0.1%	0.9%	0.3%	6.1%
65	112	44,301	-0.38%	-0.10%	61.4%	23.7%	2.4%	1.4%	0.0%	1.0%	0.4%	9.7%
74	201	44,386	-0.39%	+0.09%	81.2%	7.0%	0.7%	2.1%	0.1%	1.3%	0.3%	7.2%
13	178	44,365	-0.39%	+0.04%	63.7%	28.1%	1.0%	1.9%	0.1%	0.8%	0.5%	4.0%
27	138	44,363	-0.30%	+0.04%	78.8%	11.7%	1.5%	3.0%	0.1%	1.2%	0.5%	3.3%
14	78	44,357	-0.18%	+0.02%	68.1%	24.0%	2.6%	1.5%	0.0%	0.8%	0.4%	2.6%

State Senate District

State Senate District	Pop. Change	Adj. Pop.	Unadj. Dev.	Adj. Dev.	W%	B+B&W%	AS+AS&W %	AI+AI&W%	PI+PI&W%	OTH +OT H&W %	OTH MULT I%	H%
32	-6,141	108,027	-4.41%	-9.52%	73.9%	18.6%	0.8%	1.9%	0.1%	0.7%	0.3%	3.8%
34	-3,136	110,402	-4.93%	-7.53%	28.5%	66.4%	0.9%	0.7%	0.0%	0.4%	0.6%	2.4%
28	-2,353	112,005	-4.25%	-6.19%	66.4%	23.8%	1.5%	1.8%	0.0%	0.7%	0.6%	5.3%
39	1,285	126,193	+4.59%	+5.69%	27.4%	65.0%	0.8%	1.2%	0.1%	0.7%	0.8%	4.1%
17	-1,376	112,664	-4.51%	-5.64%	63.4%	31.0%	0.6%	0.9%	0.0%	0.7%	0.5%	2.8%
22	349	125,635	+4.90%	+5.23%	61.8%	27.8%	2.7%	1.0%	0.0%	0.7%	0.5%	5.4%
12	-752	113,419	-4.40%	-5.00%	69.0%	23.3%	0.5%	1.6%	0.0%	0.9%	0.4%	4.4%
24	422	125,221	+4.50%	+4.88%	38.6%	54.3%	0.6%	0.7%	0.0%	0.6%	0.8%	4.4%
5	1,168	125,163	+3.82%	+4.83%	35.3%	50.7%	2.7%	0.8%	0.0%	1.0%	1.0%	8.5%
23	125	125,139	+4.68%	+4.81%	73.2%	13.6%	3.6%	1.2%	0.1%	0.9%	0.5%	6.9%
7	416	124,903	+4.23%	+4.61%	20.8%	59.0%	4.7%	0.6%	0.1%	0.9%	0.9%	13.1%
37	483	113,983	-4.96%	-4.53%	62.9%	26.6%	1.4%	1.6%	0.1%	0.9%	0.4%	6.2%
38	504	124,787	+4.06%	+4.52%	58.1%	32.8%	1.7%	1.9%	0.1%	0.9%	0.6%	3.9%
9	236	124,773	+4.28%	+4.50%	65.1%	10.3%	4.1%	0.9%	0.1%	1.3%	0.5%	17.7%
26	443	124,621	+3.98%	+4.38%	75.2%	17.3%	1.4%	1.0%	0.0%	0.6%	0.3%	4.1%
2	-1,609	114,171	-3.06%	-4.37%	33.3%	59.2%	0.7%	0.6%	0.0%	0.5%	0.5%	5.1%
30	535	114,272	-4.77%	-4.29%	75.6%	12.2%	1.6%	2.8%	0.4%	0.9%	0.6%	5.9%
11	46	114,527	-4.14%	-4.08%	77.6%	8.4%	1.9%	1.7%	0.1%	1.5%	0.5%	8.4%
36	-410	124,102	+4.26%	+3.94%	62.3%	25.9%	2.0%	2.0%	0.1%	0.9%	0.5%	6.2%
19	497	123,913	+3.34%	+3.78%	55.4%	29.4%	1.2%	1.3%	0.0%	0.8%	0.5%	11.4%
20	453	123,898	+3.36%	+3.77%	68.9%	13.4%	1.4%	7.8%	0.1%	0.6%	0.7%	7.1%
13	186	115,001	-3.86%	-3.68%	80.1%	8.6%	1.2%	2.0%	0.1%	1.2%	0.3%	6.6%
10	321	123,489	+3.13%	+3.43%	58.7%	12.2%	5.1%	1.0%	0.0%	1.3%	0.5%	21.1%
25	382	123,380	+2.99%	+3.34%	67.8%	21.8%	2.5%	1.3%	0.1%	0.9%	0.7%	4.8%
15	-226	115,622	-3.00%	-3.16%	15.1%	74.7%	2.3%	0.4%	0.0%	0.4%	0.7%	6.3%
1	580	116,202	-3.19%	-2.67%	62.8%	22.5%	2.4%	1.9%	0.1%	1.4%	0.8%	8.2%
33	-201	116,695	-2.12%	-2.26%	69.3%	24.1%	0.8%	1.6%	0.0%	0.7%	0.3%	3.2%
14	949	121,699	+1.11%	+1.93%	28.5%	59.4%	3.5%	0.6%	0.0%	0.6%	0.8%	6.6%
8	625	121,545	+1.25%	+1.80%	51.0%	26.2%	5.9%	1.8%	0.1%	1.1%	0.6%	13.3%
31	387	121,289	+1.23%	+1.59%	64.1%	24.2%	1.9%	3.7%	0.1%	0.9%	0.7%	4.4%
27	645	117,876	-1.84%	-1.27%	61.7%	29.2%	1.3%	1.3%	0.1%	0.9%	0.7%	4.9%
6	314	117,909	-1.54%	-1.24%	63.6%	24.5%	2.7%	1.4%	0.0%	1.0%	0.4%	6.5%
35	399	118,218	-1.35%	-0.99%	73.9%	16.3%	1.7%	2.1%	0.0%	0.9%	0.4%	4.6%
29	649	120,483	+0.34%	+0.91%	34.7%	58.4%	1.2%	1.2%	0.1%	0.6%	0.7%	3.2%
3	779	120,298	+0.07%	+0.76%	26.4%	57.1%	5.0%	0.8%	0.0%	1.1%	1.0%	8.5%
18	239	118,489	-0.99%	-0.76%	72.1%	15.8%	1.8%	1.3%	0.0%	0.8%	0.4%	7.7%
21	457	118,562	-1.11%	-0.70%	60.0%	27.4%	1.3%	3.0%	0.0%	0.7%	0.6%	7.0%
4	796	118,617	-1.35%	-0.65%	31.1%	57.6%	1.8%	0.6%	0.0%	0.9%	0.9%	7.1%
16	160	119,191	-0.33%	-0.17%	64.8%	20.6%	4.9%	1.0%	0.0%	1.0%	0.5%	7.1%

Parish

Parish	Pop. Change	Adj. Pop.	Change (%)	W%	B+B& W%	AS+A S&W%	AI+AI &W%	PI+PI &W%	OTH+ OTH& W%	OTH MUL TI%	H%
West Feliciana	-4,382	10,928	-28.62%	69.1%	23.8%	0.5%	1.4%	0.1%	0.4%	0.4%	4.3%
Madison	-1,447	8,570	-14.45%	34.1%	62.4%	0.1%	0.5%	0.0%	0.3%	0.6%	2.0%
East Carroll	-736	6,723	-9.87%	27.3%	69.9%	0.3%	0.5%	0.0%	0.2%	0.4%	1.5%
East Feliciana	-1,674	17,865	-8.57%	58.4%	37.0%	0.4%	1.2%	0.0%	0.6%	0.4%	2.0%
Tensas	-348	3,799	-8.39%	41.7%	54.6%	0.3%	0.4%	0.0%	0.6%	0.8%	1.6%
Iberville	-1,469	28,772	-4.86%	48.4%	44.7%	0.6%	0.7%	0.0%	0.5%	0.4%	4.7%
Caldwell	-461	9,184	-4.78%	78.3%	16.6%	0.5%	1.4%	0.1%	0.6%	0.1%	2.3%
Avoyelles	-1,617	38,076	-4.07%	63.6%	28.6%	1.0%	1.8%	0.0%	0.6%	0.7%	3.7%
Allen	-919	21,831	-4.04%	66.6%	18.8%	0.9%	4.0%	0.1%	0.7%	0.7%	8.3%
Catahoula	-357	8,549	-4.01%	64.4%	26.2%	0.4%	1.1%	0.1%	0.5%	0.5%	6.9%
Franklin	-598	19,176	-3.02%	62.9%	33.8%	0.2%	0.9%	0.0%	0.5%	0.3%	1.4%
Concordia	-416	18,271	-2.23%	54.4%	40.8%	0.6%	1.1%	0.0%	0.4%	0.3%	2.5%
Claiborne	-304	13,866	-2.15%	49.9%	44.1%	0.5%	1.3%	0.0%	0.4%	0.4%	3.4%
Richland	-426	19,617	-2.13%	58.2%	37.3%	0.4%	1.2%	0.0%	0.6%	0.3%	2.0%
Washington	-841	44,622	-1.85%	65.1%	28.9%	0.4%	1.4%	0.0%	0.7%	0.3%	3.1%
Plaquemines	-282	23,233	-1.20%	58.5%	21.8%	5.2%	2.5%	0.2%	1.4%	0.8%	9.5%
Union	-153	20,954	-0.72%	67.7%	24.3%	0.3%	1.4%	0.1%	0.6%	0.3%	5.4%
Caddo	1,682	239,530	+0.71%	42.8%	49.1%	1.6%	1.4%	0.1%	0.8%	0.7%	3.5%
Orleans	2,703	386,700	+0.70%	31.6%	54.5%	3.2%	0.6%	0.1%	1.0%	1.0%	8.1%
Bienville	77	13,058	+0.59%	53.2%	42.3%	0.4%	1.5%	0.1%	0.5%	0.4%	1.6%
Rapides	723	130,746	+0.56%	58.7%	31.9%	1.8%	2.1%	0.1%	0.9%	0.6%	3.9%
Evangeline	181	32,531	+0.56%	65.4%	28.0%	0.7%	0.8%	0.0%	0.6%	0.4%	4.1%
West Baton Rouge	-151	27,048	-0.56%	51.9%	40.3%	1.0%	1.0%	0.1%	0.6%	0.6%	4.6%
Beauregard	201	36,750	+0.55%	79.5%	12.1%	1.0%	2.6%	0.1%	0.8%	0.4%	3.5%
De Soto	145	26,957	+0.54%	56.4%	36.5%	0.4%	2.5%	0.0%	0.8%	0.5%	2.8%
Jefferson	2,067	442,848	+0.47%	47.3%	27.0%	5.0%	1.0%	0.0%	1.1%	0.6%	17.9%
Calcasieu	968	217,753	+0.45%	63.2%	26.4%	2.1%	1.4%	0.1%	0.9%	0.7%	5.3%
Vernon	214	48,964	+0.44%	68.9%	14.4%	2.6%	2.9%	0.7%	1.1%	0.9%	8.6%
Morehouse	-112	25,517	-0.44%	47.7%	47.9%	0.5%	1.4%	0.0%	0.5%	0.6%	1.5%
Pointe Coupee	87	20,845	+0.42%	59.0%	35.5%	0.4%	0.6%	0.0%	0.9%	0.5%	3.0%
Acadia	244	57,820	+0.42%	76.6%	18.4%	0.4%	0.9%	0.0%	0.5%	0.3%	2.9%
St Bernard	178	43,942	+0.41%	52.9%	27.0%	2.9%	1.5%	0.0%	1.4%	0.6%	13.7%
Terrebonne	428	110,008	+0.39%	62.8%	20.1%	1.5%	7.4%	0.1%	0.6%	0.8%	6.7%
Iberia	273	70,202	+0.39%	55.2%	34.2%	3.0%	0.9%	0.0%	0.6%	0.6%	5.6%
West Carroll	37	9,788	+0.38%	80.0%	14.3%	0.2%	1.6%	0.0%	0.4%	0.2%	3.3%
St Landry	312	82,852	+0.38%	52.4%	42.5%	0.6%	0.6%	0.0%	0.6%	0.7%	2.6%
Webster	-138	36,829	-0.37%	61.0%	33.8%	0.5%	1.8%	0.0%	0.7%	0.3%	1.9%
Assumption	76	21,115	+0.36%	64.5%	29.0%	0.4%	1.1%	0.0%	0.4%	0.2%	4.3%

Parish	Pop. Change	Adj. Pop.	Change (%)	W%	B+B& W%	AS+A S&W%	AI+AI &W%	PI+PI &W%	OTH+ OTH& W%	OTH MUL TI%	H%
St Mary	179	49,585	+0.36%	53.3%	31.5%	1.6%	3.1%	0.1%	0.7%	0.6%	9.2%
Jefferson Davis	116	32,366	+0.36%	77.1%	17.4%	0.5%	1.3%	0.1%	0.8%	0.7%	2.3%
St Helena	37	10,957	+0.34%	41.2%	54.5%	0.2%	1.0%	0.0%	0.6%	0.5%	2.0%
St John The Baptist	141	42,618	+0.33%	31.4%	57.9%	0.9%	0.8%	0.0%	0.6%	0.6%	7.7%
Grant	74	22,243	+0.33%	75.2%	14.4%	0.5%	2.7%	0.0%	0.8%	0.4%	6.0%
Tangipahoa	429	133,586	+0.32%	59.9%	30.8%	1.0%	1.6%	0.1%	0.8%	0.4%	5.4%
Jackson	47	15,078	+0.31%	65.8%	27.1%	1.1%	1.5%	0.0%	0.9%	0.4%	3.1%
Vermilion	174	57,533	+0.30%	76.7%	14.8%	2.4%	1.0%	0.1%	0.7%	0.3%	4.0%
St Tammany	708	265,278	+0.27%	72.6%	13.7%	2.0%	1.8%	0.1%	1.4%	0.6%	7.9%
St Martin	138	51,905	+0.27%	63.6%	30.2%	1.0%	0.9%	0.0%	0.6%	0.4%	3.2%
Livingston	366	142,648	+0.26%	80.7%	8.5%	1.1%	1.9%	0.1%	1.2%	0.3%	6.2%
St Charles	137	52,686	+0.26%	62.2%	25.7%	1.4%	1.4%	0.0%	0.9%	0.5%	7.9%
St James	50	20,242	+0.25%	49.1%	47.6%	0.2%	0.4%	0.0%	0.5%	0.5%	1.7%
Winn	35	13,790	+0.25%	61.8%	26.6%	1.4%	1.8%	0.1%	0.4%	0.5%	7.4%
East Baton Rouge	1,062	457,843	+0.23%	41.9%	45.7%	3.5%	0.8%	0.0%	0.7%	0.6%	6.7%
Cameron	13	5,630	+0.23%	92.1%	1.6%	0.4%	1.3%	0.0%	0.8%	0.3%	3.5%
Natchitoches	75	37,590	+0.20%	50.4%	40.6%	0.6%	2.0%	0.1%	1.4%	1.0%	4.0%
Lafourche	183	97,740	+0.19%	72.5%	15.8%	1.0%	4.0%	0.0%	0.5%	0.4%	5.8%
Lincoln	88	48,484	+0.18%	53.0%	39.3%	1.8%	1.2%	0.0%	0.5%	0.4%	3.6%
Sabine	40	22,195	+0.18%	67.0%	16.7%	0.4%	11.2%	0.1%	0.7%	0.6%	3.2%
Ouachita	256	160,624	+0.16%	54.5%	37.5%	1.7%	1.5%	0.0%	0.8%	0.5%	3.5%
Ascension	201	126,701	+0.16%	63.0%	24.7%	1.7%	1.1%	0.1%	0.8%	0.4%	8.2%
Lafayette	361	242,114	+0.15%	62.2%	26.1%	2.6%	1.1%	0.0%	0.8%	0.6%	6.6%
Red River	11	7,631	+0.14%	54.5%	40.0%	0.0%	1.9%	0.0%	0.6%	0.6%	2.5%
La Salle	11	14,802	+0.07%	76.1%	9.2%	1.9%	2.4%	0.1%	0.6%	0.2%	9.5%
Bossier	-70	128,676	-0.05%	61.3%	24.3%	2.5%	2.1%	0.2%	1.0%	0.7%	8.0%

Zip Code Tabulation Area

Zip Code Tabulation Area	Pop. Change	Adj. Pop.	Change (%)	W%	B+B& W%	AS+A S&W %	AI+AI &W%	PI+P I&W %	OTH+ OTH& W%	OTH MUL TI%	H%
70712	-4,293	1,334	-76.29%	75.6%	15.4%	0.0%	1.4%	0.0%	0.0%	0.1%	7.5%
71340	-412	435	-48.64%	85.2%	8.9%	0.2%	1.2%	0.2%	0.0%	0.2%	4.0%
70082	-360	472	-43.27%	14.9%	81.2%	0.5%	0.0%	0.0%	0.2%	0.4%	2.8%
71375	-365	603	-37.71%	27.6%	68.5%	0.3%	0.2%	0.0%	0.4%	1.1%	1.9%
71327	-1,682	3,994	-29.63%	44.8%	34.1%	4.2%	0.8%	0.0%	0.6%	0.4%	15.0%
70776	-1,622	4,269	-27.53%	48.4%	37.2%	1.3%	0.4%	0.0%	0.8%	0.4%	11.5%
70748	-1,569	4,995	-23.90%	57.7%	36.8%	0.3%	1.1%	0.1%	0.4%	0.5%	3.1%
70426	-1,214	4,880	-19.92%	64.2%	31.4%	0.1%	1.3%	0.0%	0.4%	0.1%	2.5%
71282	-1,447	7,684	-15.85%	29.1%	67.3%	0.1%	0.4%	0.1%	0.2%	0.7%	2.1%
70648	-1,021	6,177	-14.18%	68.9%	14.8%	1.2%	3.7%	0.1%	0.6%	0.8%	10.0%
71435	-514	3,287	-13.52%	80.9%	15.2%	0.3%	1.4%	0.1%	0.4%	0.1%	1.7%
71064	-533	3,729	-12.51%	51.8%	44.1%	0.2%	1.2%	0.0%	0.4%	0.4%	1.8%
71254	-737	6,018	-10.91%	23.3%	74.3%	0.3%	0.4%	0.0%	0.1%	0.4%	1.3%
71229	-178	1,746	-9.25%	60.9%	34.7%	0.4%	1.4%	0.1%	0.6%	0.4%	1.6%
71480	-62	1,095	-5.36%	54.5%	7.3%	12.6%	1.6%	0.0%	0.8%	0.1%	23.1%
NO ZCTA	7	142	+5.19%	43.0%	12.6%	2.2%	11.9%	0.0%	7.4%	0.7%	22.2%
71334	-431	8,087	-5.06%	35.1%	60.2%	0.7%	0.7%	0.0%	0.4%	0.2%	2.7%
70340	4	85	+4.94%	8.6%	79.0%	1.2%	0.0%	0.0%	0.0%	0.0%	11.1%
71295	-642	13,427	-4.56%	58.4%	38.5%	0.2%	0.8%	0.0%	0.3%	0.3%	1.4%
71040	-333	7,955	-4.02%	45.0%	48.3%	0.6%	0.9%	0.0%	0.3%	0.4%	4.6%
71269	-471	11,872	-3.82%	59.2%	36.3%	0.4%	1.2%	0.0%	0.6%	0.4%	2.0%
70050	1	29	+3.57%	14.3%	32.1%	7.1%	0.0%	0.0%	0.0%	0.0%	46.4%
70722	-138	5,431	-2.48%	59.3%	36.6%	0.5%	1.2%	0.0%	0.6%	0.2%	1.6%
71101	151	6,711	+2.30%	20.5%	71.0%	0.8%	1.1%	0.1%	0.9%	0.9%	4.7%
71434	1	46	+2.22%	82.2%	6.7%	2.2%	4.4%	0.0%	0.0%	0.0%	4.4%
71241	-200	9,335	-2.10%	65.1%	26.9%	0.3%	1.3%	0.1%	0.5%	0.2%	5.6%
70451	4	196	+2.08%	37.5%	47.4%	1.6%	1.6%	0.0%	0.5%	0.0%	11.5%
70463	2	100	+2.04%	74.5%	20.4%	1.0%	1.0%	0.0%	0.0%	1.0%	2.0%
71414	5	254	+2.01%	9.6%	86.7%	0.0%	1.2%	0.4%	0.0%	2.0%	0.0%
70654	4	211	+1.93%	94.2%	0.5%	0.0%	3.9%	0.0%	1.0%	0.0%	0.5%
70714	-358	18,596	-1.89%	25.4%	69.0%	0.4%	0.7%	0.0%	0.5%	0.5%	3.4%
71109	338	18,752	+1.84%	5.2%	91.0%	0.3%	0.5%	0.0%	0.4%	1.1%	1.5%
71103	115	6,477	+1.81%	7.3%	89.5%	0.2%	0.1%	0.0%	0.2%	1.0%	1.7%
71415	5	313	+1.62%	62.3%	30.5%	0.3%	2.3%	0.0%	0.6%	0.0%	3.9%
71108	269	17,996	+1.52%	9.7%	85.4%	0.5%	0.6%	0.1%	0.5%	1.0%	2.3%
71009	3	204	+1.49%	79.6%	3.0%	0.0%	12.9%	0.0%	0.5%	0.5%	3.5%
70789	6	411	+1.48%	24.7%	69.4%	1.0%	0.5%	0.0%	1.0%	1.2%	2.2%
70801	5	345	+1.47%	62.6%	19.7%	11.5%	0.0%	0.0%	1.2%	0.3%	4.7%
70113	120	8,689	+1.40%	18.1%	67.4%	2.1%	0.5%	0.1%	0.8%	1.4%	9.6%
71055	-256	18,370	-1.37%	53.1%	42.3%	0.5%	1.4%	0.1%	0.6%	0.4%	1.6%
70427	244	18,185	+1.36%	58.6%	34.9%	0.7%	1.4%	0.0%	0.8%	0.4%	3.1%

Zip Code Tabulation Area	Pop. Change	Adj. Pop.	Change (%)	W%	B+B& W%	AS+A S&W %	AI+AI &W%	PI+P I&W %	OTH+ OTH& W%	OTH MUL TI%	H%
71345	1	75	+1.35%	16.2%	75.7%	0.0%	0.0%	0.0%	2.7%	1.4%	4.1%
70805	339	26,364	+1.30%	3.2%	93.4%	0.2%	0.3%	0.0%	0.3%	0.8%	1.8%
70640	2	157	+1.29%	38.7%	51.6%	0.6%	1.3%	0.0%	0.6%	3.2%	3.9%
70352	3	236	+1.29%	91.4%	1.7%	0.4%	1.7%	0.0%	0.9%	0.0%	3.9%
70112	64	5,052	+1.28%	37.1%	45.4%	7.6%	0.8%	0.0%	1.1%	0.8%	7.3%
70117	358	28,886	+1.25%	26.6%	63.8%	1.0%	0.8%	0.1%	1.1%	1.0%	5.6%
70802	327	26,846	+1.23%	22.6%	69.4%	2.1%	0.4%	0.1%	0.5%	0.8%	4.1%
70585	3	246	+1.23%	95.5%	0.4%	0.0%	1.2%	0.0%	0.0%	0.0%	2.9%
71301	247	20,701	+1.21%	34.8%	57.3%	2.0%	1.0%	0.0%	0.6%	0.8%	3.4%
71063	8	667	+1.21%	55.7%	38.5%	0.5%	1.7%	0.0%	0.8%	0.6%	2.3%
71404	-10	818	-1.21%	75.4%	16.1%	0.8%	3.4%	0.5%	0.8%	1.0%	2.1%
71302	162	13,577	+1.21%	17.2%	78.8%	0.4%	0.7%	0.0%	0.5%	0.9%	1.4%
70754	-142	11,824	-1.19%	90.2%	2.9%	0.6%	1.8%	0.0%	1.1%	0.2%	3.2%
70465	5	430	+1.18%	8.0%	87.8%	0.2%	0.2%	0.2%	0.2%	1.2%	2.1%
70767	-180	15,129	-1.18%	49.6%	42.9%	0.7%	0.8%	0.1%	0.6%	0.7%	4.6%
70807	-188	15,903	-1.17%	2.2%	95.4%	0.1%	0.1%	0.0%	0.1%	0.7%	1.3%
70787	1	87	+1.16%	24.4%	69.8%	0.0%	2.3%	0.0%	0.0%	3.5%	0.0%
71069	6	525	+1.16%	67.8%	22.0%	0.8%	2.7%	0.0%	1.5%	0.2%	5.0%
70091	2	182	+1.11%	69.4%	11.7%	5.0%	2.8%	0.0%	1.7%	2.8%	6.7%
70436	5	455	+1.11%	19.1%	80.2%	0.0%	0.2%	0.0%	0.2%	0.0%	0.2%
70076	3	279	+1.09%	33.3%	61.6%	0.0%	0.0%	0.0%	0.0%	0.4%	4.7%
70356	25	2,323	+1.09%	45.3%	45.7%	0.4%	3.7%	0.0%	1.0%	0.3%	3.5%
70114	247	23,374	+1.07%	17.3%	70.7%	1.0%	0.6%	0.1%	0.7%	1.0%	8.7%
71253	3	284	+1.07%	87.9%	8.2%	0.0%	2.8%	0.0%	0.0%	0.4%	0.7%
70601	367	34,938	+1.06%	27.4%	64.5%	0.9%	0.8%	0.1%	0.8%	1.2%	4.3%
70422	-145	13,718	-1.05%	50.3%	43.4%	0.5%	1.1%	0.0%	0.6%	0.3%	3.7%
70747	2	196	+1.03%	26.3%	66.5%	1.0%	0.0%	0.0%	1.5%	0.5%	4.1%
71378	22	2,171	+1.02%	60.5%	36.4%	0.2%	0.7%	0.0%	0.4%	0.1%	1.7%
70038	2	199	+1.02%	49.2%	21.3%	8.1%	6.6%	0.0%	0.5%	2.0%	12.2%
70116	108	10,784	+1.01%	44.7%	43.8%	1.2%	1.1%	0.0%	1.2%	1.3%	6.7%
70580	2	204	+0.99%	76.2%	18.3%	0.0%	1.0%	0.0%	0.0%	0.5%	4.0%
70062	164	16,791	+0.99%	31.1%	37.2%	2.0%	1.0%	0.1%	0.9%	0.5%	27.3%
70744	55	5,722	+0.97%	86.3%	4.3%	0.4%	2.2%	0.1%	1.4%	0.2%	5.0%
70775	-91	9,314	-0.97%	65.9%	28.2%	0.8%	1.5%	0.1%	0.7%	0.6%	2.4%
70391	1	105	+0.96%	77.9%	17.3%	1.0%	1.9%	0.0%	0.0%	1.0%	1.0%
70753	7	737	+0.96%	47.5%	47.3%	0.3%	0.4%	0.0%	0.3%	0.7%	3.6%
71068	31	3,323	+0.94%	57.8%	37.2%	0.2%	1.8%	0.0%	0.7%	0.5%	1.8%
70660	15	1,663	+0.91%	91.3%	1.7%	0.4%	2.8%	0.0%	0.7%	0.1%	3.0%
71104	124	13,804	+0.91%	53.1%	33.1%	3.0%	1.6%	0.2%	1.0%	1.1%	7.0%
70550	2	224	+0.90%	34.7%	54.1%	0.0%	0.5%	0.0%	1.4%	3.6%	5.9%
70659	12	1,362	+0.89%	77.6%	7.6%	1.0%	3.2%	0.3%	0.1%	0.9%	9.3%
70094	272	30,910	+0.89%	36.7%	45.2%	3.3%	1.2%	0.0%	0.8%	0.6%	12.2%
71044	6	690	+0.88%	84.6%	13.3%	0.3%	0.9%	0.1%	0.0%	0.1%	0.6%

Zip Code Tabulation Area	Pop. Change	Adj. Pop.	Change (%)	W%	B+B& W%	AS+A S&W %	AI+AI &W%	PI+P I&W %	OTH+ OTH& W%	OTH MUL TI%	H%
71418	49	5,674	+0.87%	78.6%	15.8%	0.6%	1.4%	0.1%	0.7%	0.2%	2.6%
71039	15	1,731	+0.87%	69.7%	25.1%	0.0%	2.2%	0.0%	0.4%	0.5%	2.2%
70092	65	7,567	+0.87%	36.2%	52.4%	1.1%	1.1%	0.0%	0.9%	0.5%	7.8%
70761	7	813	+0.87%	52.9%	44.0%	0.1%	1.4%	0.0%	0.7%	0.2%	0.6%
70462	47	5,537	+0.86%	78.6%	14.2%	0.6%	1.5%	0.1%	1.2%	0.3%	3.5%
71021	4	475	+0.85%	14.6%	82.6%	0.0%	0.0%	0.0%	0.4%	0.2%	2.1%
70377	31	3,733	+0.84%	67.4%	2.8%	0.4%	26.4%	0.1%	0.6%	0.5%	1.7%
71075	49	5,893	+0.84%	61.2%	33.9%	0.8%	1.6%	0.1%	0.7%	0.3%	1.5%
70773	1	120	+0.84%	51.3%	35.3%	0.0%	0.0%	0.0%	4.2%	0.8%	8.4%
70445	91	10,957	+0.84%	65.2%	19.2%	1.2%	2.4%	0.1%	2.1%	1.8%	8.0%
70125	146	17,603	+0.84%	34.4%	52.4%	2.1%	0.8%	0.0%	1.0%	0.9%	8.4%
70460	187	22,616	+0.83%	52.5%	32.4%	1.4%	2.0%	0.1%	1.6%	1.2%	9.0%
71463	80	9,710	+0.83%	60.4%	24.3%	0.8%	2.8%	0.1%	0.7%	0.5%	10.5%
70534	6	731	+0.83%	90.2%	5.2%	0.0%	1.7%	0.0%	0.1%	0.0%	2.8%
71357	13	1,608	+0.82%	45.8%	50.0%	0.1%	0.4%	0.1%	0.8%	1.0%	1.8%
70514	15	1,858	+0.81%	35.9%	57.8%	1.1%	2.1%	0.1%	0.4%	0.7%	2.0%
70523	6	750	+0.81%	36.4%	30.8%	0.1%	27.8%	0.0%	0.5%	1.7%	2.6%
70127	194	24,526	+0.80%	1.9%	92.3%	1.3%	0.2%	0.0%	0.5%	0.9%	2.8%
71082	35	4,430	+0.80%	62.0%	31.9%	0.9%	2.4%	0.0%	0.6%	0.3%	1.8%
70072	448	57,372	+0.79%	39.8%	40.4%	6.0%	1.6%	0.0%	0.9%	0.7%	10.6%
70051	14	1,791	+0.79%	48.3%	47.6%	0.2%	1.0%	0.1%	0.5%	0.5%	1.9%
71052	72	9,481	+0.77%	29.0%	65.9%	0.5%	1.3%	0.0%	0.5%	0.6%	2.3%
71106	270	35,176	+0.77%	51.5%	40.1%	2.3%	1.2%	0.0%	0.7%	0.6%	3.6%
70656	29	3,853	+0.76%	86.7%	1.8%	0.5%	5.9%	0.0%	1.0%	0.4%	3.7%
70126	231	30,628	+0.76%	4.3%	88.7%	0.6%	0.2%	0.0%	0.4%	1.0%	4.8%
71479	5	661	+0.76%	94.2%	1.7%	0.2%	2.1%	0.0%	0.5%	0.3%	1.1%
70355	7	927	+0.76%	93.4%	2.2%	0.1%	1.4%	0.0%	0.2%	0.0%	2.7%
70449	26	3,496	+0.75%	91.7%	3.1%	0.5%	1.6%	0.0%	0.7%	0.0%	2.2%
71422	11	1,480	+0.75%	87.3%	7.6%	0.6%	2.5%	0.0%	0.7%	0.3%	1.0%
70040	9	1,209	+0.75%	34.0%	53.5%	0.4%	1.4%	0.0%	0.8%	0.2%	9.7%
70058	309	41,686	+0.75%	21.4%	56.1%	7.5%	0.6%	0.0%	0.8%	0.8%	12.7%
71073	16	2,170	+0.74%	64.1%	30.8%	0.4%	1.7%	0.0%	0.0%	0.2%	2.6%
71343	54	7,314	+0.74%	65.1%	24.9%	0.4%	1.3%	0.1%	0.3%	0.5%	7.4%
71322	44	5,957	+0.74%	49.1%	43.6%	0.3%	2.5%	0.0%	0.5%	0.8%	3.1%
70456	20	2,761	+0.73%	41.7%	54.2%	0.4%	1.2%	0.1%	0.4%	0.5%	1.6%
71336	11	1,510	+0.73%	80.2%	14.9%	0.1%	1.8%	0.0%	1.9%	0.3%	0.9%
71043	3	415	+0.73%	72.1%	22.8%	0.0%	2.7%	0.0%	0.7%	1.0%	0.7%
70812	79	11,055	+0.72%	2.9%	92.3%	0.0%	0.1%	0.1%	0.1%	0.6%	3.8%
71061	11	1,529	+0.72%	68.1%	26.0%	0.2%	3.0%	0.1%	0.8%	0.5%	1.3%
70393	3	424	+0.71%	51.8%	41.6%	0.7%	0.0%	0.0%	0.2%	0.2%	5.5%
70080	10	1,427	+0.71%	74.0%	12.1%	1.2%	1.2%	0.1%	1.4%	0.4%	9.7%
70119	266	38,314	+0.70%	38.2%	44.8%	1.8%	0.8%	0.1%	1.2%	1.0%	12.1%
70358	7	1,012	+0.70%	92.4%	0.2%	0.6%	2.6%	0.0%	0.9%	0.3%	3.0%

Zip Code Tabulation Area	Pop. Change	Adj. Pop.	Change (%)	W%	B+B& W%	AS+A S&W %	AI+AI &W%	PI+P I&W %	OTH+ OTH& W%	OTH MUL TI%	H%
70357	17	2,436	+0.70%	78.0%	1.9%	0.5%	12.9%	0.0%	0.2%	0.7%	5.8%
71071	16	2,351	+0.69%	90.6%	4.7%	0.1%	2.4%	0.0%	0.6%	0.0%	1.4%
71202	-189	27,346	-0.69%	9.0%	84.2%	1.0%	0.5%	0.0%	0.4%	0.9%	4.1%
70661	15	2,194	+0.69%	92.9%	3.0%	0.1%	2.0%	0.1%	0.3%	0.6%	1.0%
71407	6	882	+0.68%	90.0%	1.8%	0.5%	4.1%	0.2%	1.1%	0.5%	1.8%
70130	99	14,620	+0.68%	59.7%	23.7%	4.1%	1.5%	0.1%	1.3%	1.0%	8.7%
70450	19	2,797	+0.68%	70.2%	24.9%	0.2%	1.3%	0.0%	0.5%	0.2%	2.7%
70443	70	10,299	+0.68%	57.4%	31.7%	0.4%	1.5%	0.0%	0.8%	0.4%	7.7%
71411	17	2,553	+0.67%	56.1%	35.4%	0.2%	4.3%	0.0%	1.0%	0.6%	2.4%
71454	15	2,266	+0.67%	80.1%	13.8%	0.4%	3.0%	0.1%	0.7%	0.5%	1.4%
71474	4	605	+0.67%	84.9%	5.5%	0.8%	3.8%	0.3%	1.0%	0.2%	3.5%
71323	7	1,055	+0.67%	94.4%	1.0%	0.3%	1.1%	0.0%	0.7%	0.7%	1.8%
70041	18	2,693	+0.67%	49.4%	18.4%	18.1%	3.8%	0.1%	2.2%	1.5%	6.5%
70537	3	455	+0.66%	96.0%	0.4%	0.0%	0.7%	0.0%	0.0%	0.0%	2.9%
70359	62	9,653	+0.65%	59.4%	27.2%	0.9%	5.2%	0.0%	0.8%	0.9%	5.6%
70759	8	1,247	+0.65%	57.8%	32.3%	0.2%	0.6%	0.0%	2.0%	0.4%	6.7%
70526	113	17,446	+0.65%	68.6%	26.1%	0.5%	0.8%	0.0%	0.5%	0.4%	3.1%
70397	8	1,248	+0.65%	76.0%	2.7%	0.7%	15.9%	0.0%	0.8%	0.3%	3.5%
70341	21	3,260	+0.65%	31.2%	65.5%	0.2%	0.4%	0.0%	0.0%	0.0%	2.8%
70764	101	15,717	+0.65%	53.7%	40.8%	0.5%	0.8%	0.1%	0.4%	0.3%	3.4%
70128	118	18,378	+0.65%	1.7%	87.9%	6.1%	0.2%	0.0%	0.4%	1.2%	2.5%
71047	68	10,766	+0.64%	71.8%	20.1%	0.6%	2.9%	0.1%	1.0%	0.4%	3.1%
70442	3	471	+0.64%	87.2%	3.6%	0.4%	3.8%	0.0%	1.5%	0.0%	3.4%
71051	13	2,038	+0.64%	78.8%	12.0%	0.8%	2.8%	0.0%	1.6%	0.3%	3.5%
71243	1	158	+0.64%	80.3%	13.4%	0.0%	1.3%	0.0%	1.3%	0.6%	3.2%
70780	6	963	+0.63%	49.0%	46.1%	0.6%	0.7%	0.0%	0.4%	0.1%	3.0%
70632	2	317	+0.63%	90.5%	5.4%	0.0%	1.0%	0.0%	0.0%	0.0%	3.2%
70353	7	1,113	+0.63%	45.4%	4.0%	2.4%	40.6%	0.2%	0.4%	0.7%	6.3%
70344	33	5,251	+0.63%	81.4%	7.0%	0.7%	7.1%	0.0%	0.6%	0.3%	3.0%
70122	217	35,203	+0.62%	19.0%	69.7%	1.8%	0.4%	0.0%	1.2%	1.5%	6.2%
70453	7	1,129	+0.62%	67.8%	26.7%	0.3%	1.4%	0.2%	1.2%	0.9%	1.4%
70586	122	19,711	+0.62%	63.3%	32.5%	0.7%	0.7%	0.0%	0.6%	0.3%	2.0%
70631	-5	818	-0.61%	92.1%	3.0%	0.1%	1.6%	0.1%	0.9%	0.2%	1.9%
70615	91	15,040	+0.61%	40.3%	52.3%	0.5%	0.7%	0.0%	0.7%	1.2%	4.2%
71461	13	2,157	+0.61%	36.5%	41.4%	6.6%	1.8%	0.6%	1.5%	1.7%	10.0%
71423	31	5,238	+0.60%	90.3%	2.5%	0.6%	3.2%	0.0%	0.8%	0.6%	2.1%
71018	8	1,338	+0.60%	59.8%	32.8%	0.2%	3.1%	0.0%	1.6%	0.2%	2.3%
71260	16	2,669	+0.60%	67.5%	25.9%	0.4%	1.6%	0.0%	0.8%	0.2%	3.5%
70733	10	1,680	+0.60%	91.0%	1.3%	2.4%	1.7%	0.0%	1.1%	0.2%	2.3%
71027	11	1,872	+0.59%	63.3%	29.3%	0.4%	3.7%	0.0%	1.2%	0.4%	1.7%
71070	8	1,366	+0.59%	75.8%	18.9%	0.4%	2.7%	0.2%	0.5%	0.5%	1.0%
70757	18	3,074	+0.59%	43.9%	52.6%	0.0%	0.6%	0.0%	0.5%	0.2%	2.2%
71247	5	852	+0.59%	45.2%	47.1%	1.7%	1.2%	0.0%	2.5%	0.2%	2.1%

Zip Code Tabulation Area	Pop. Change	Adj. Pop.	Change (%)	W%	B+B& W%	AS+A S&W %	AI+AI &W%	PI+P I&W %	OTH+ OTH& W%	OTH MUL TI%	H%
70438	115	19,767	+0.59%	71.0%	22.5%	0.4%	1.6%	0.0%	0.7%	0.3%	3.4%
71028	8	1,359	+0.59%	29.0%	66.5%	0.0%	0.5%	0.1%	0.4%	1.0%	2.3%
71432	6	1,048	+0.58%	92.2%	1.0%	0.1%	3.9%	0.0%	0.4%	0.2%	2.2%
70084	37	6,448	+0.58%	42.1%	50.8%	0.3%	0.9%	0.0%	0.3%	0.4%	5.2%
71232	35	6,108	+0.58%	51.0%	44.9%	0.3%	0.9%	0.0%	0.4%	0.2%	2.3%
71079	1	174	+0.58%	62.4%	34.1%	0.6%	1.7%	0.0%	0.6%	0.0%	0.6%
70401	122	21,136	+0.58%	48.9%	40.8%	1.6%	1.2%	0.1%	0.6%	0.5%	6.3%
70634	146	25,185	+0.58%	74.8%	15.5%	1.4%	2.6%	0.2%	0.9%	0.5%	4.2%
71486	23	3,985	+0.58%	47.6%	21.0%	0.4%	24.5%	0.1%	0.3%	1.0%	5.0%
70760	37	6,546	+0.57%	33.4%	63.0%	0.8%	0.3%	0.0%	0.6%	0.5%	1.3%
71038	19	3,340	+0.57%	47.0%	48.3%	0.2%	2.0%	0.0%	0.4%	0.5%	1.6%
70788	21	3,713	+0.57%	32.4%	62.6%	0.1%	0.7%	0.1%	0.3%	0.5%	3.3%
71403	25	4,373	+0.57%	87.4%	1.9%	1.4%	4.1%	0.4%	1.2%	0.4%	3.1%
71266	9	1,597	+0.57%	70.6%	22.4%	0.4%	1.8%	0.0%	0.9%	0.1%	3.8%
70083	13	2,320	+0.56%	27.4%	55.2%	3.3%	5.1%	0.1%	2.7%	1.6%	4.6%
71223	2	360	+0.56%	43.6%	47.2%	0.8%	1.4%	0.0%	0.6%	1.1%	5.3%
70466	50	8,906	+0.56%	61.5%	26.5%	0.6%	2.1%	0.0%	0.7%	0.4%	8.3%
71065	6	1,078	+0.56%	63.3%	29.7%	0.0%	3.4%	0.0%	0.8%	0.3%	2.5%
70811	72	13,188	+0.55%	9.4%	85.9%	0.3%	0.3%	0.1%	0.2%	0.6%	3.2%
70668	36	6,612	+0.55%	77.0%	13.4%	0.6%	2.0%	0.0%	1.0%	0.3%	5.8%
71446	121	22,216	+0.55%	68.1%	17.0%	2.6%	2.9%	0.6%	1.2%	0.8%	6.8%
71129	72	13,270	+0.55%	31.6%	59.6%	0.7%	1.2%	0.0%	0.9%	0.9%	5.1%
71465	16	2,910	+0.55%	91.7%	2.6%	0.1%	2.6%	0.1%	0.8%	0.2%	1.9%
70373	36	6,526	+0.55%	75.9%	5.1%	2.4%	6.2%	0.0%	0.7%	0.4%	9.3%
70637	3	557	+0.54%	94.2%	1.1%	0.2%	1.8%	0.0%	1.8%	0.0%	0.9%
70452	71	13,258	+0.54%	81.8%	6.7%	1.0%	2.6%	0.1%	1.5%	0.5%	5.9%
71368	7	1,294	+0.54%	51.4%	44.1%	0.2%	1.6%	0.0%	1.1%	0.3%	1.3%
71371	11	2,066	+0.54%	93.0%	2.7%	0.2%	2.8%	0.0%	0.5%	0.0%	0.7%
70783	13	2,435	+0.54%	75.9%	19.2%	0.2%	0.7%	0.0%	0.9%	0.7%	2.2%
70031	7	1,297	+0.54%	50.7%	41.9%	0.0%	1.2%	0.1%	0.5%	0.9%	4.7%
71259	9	1,695	+0.53%	75.1%	20.6%	0.5%	1.4%	0.0%	0.3%	0.5%	1.5%
71425	1	190	+0.53%	96.8%	0.0%	0.0%	1.1%	0.0%	0.0%	1.1%	1.1%
70115	169	31,905	+0.53%	61.5%	24.9%	2.9%	0.9%	0.0%	1.2%	0.7%	7.9%
71326	6	1,137	+0.53%	45.4%	49.9%	0.3%	0.9%	0.0%	0.8%	0.4%	2.5%
71029	1	189	+0.53%	53.7%	36.2%	0.0%	2.1%	0.0%	0.0%	1.1%	6.9%
70750	7	1,328	+0.53%	92.7%	1.1%	0.2%	2.4%	0.0%	0.6%	0.9%	2.1%
71030	8	1,522	+0.53%	53.2%	37.5%	0.3%	4.6%	0.0%	0.0%	1.5%	3.0%
71350	22	4,250	+0.52%	58.5%	36.8%	0.4%	1.8%	0.0%	0.7%	0.7%	1.2%
70782	1	192	+0.52%	58.1%	35.6%	1.0%	0.5%	0.0%	1.0%	1.0%	2.6%
70354	23	4,419	+0.52%	74.9%	2.9%	0.6%	7.9%	0.0%	0.3%	0.5%	12.7%
70657	29	5,562	+0.52%	91.7%	2.5%	0.3%	2.2%	0.0%	0.7%	0.1%	2.4%
70723	7	1,342	+0.52%	29.0%	68.2%	0.1%	0.2%	0.0%	0.2%	0.7%	1.6%
70372	12	2,335	+0.52%	67.4%	25.2%	0.5%	0.9%	0.0%	0.6%	0.3%	5.1%

Zip Code Tabulation Area	Pop. Change	Adj. Pop.	Change (%)	W%	B+B& W%	AS+A S&W %	AI+AI &W%	PI+P I&W %	OTH+ OTH& W%	OTH MUL TI%	H%
71219	6	1,154	+0.52%	89.8%	7.5%	0.2%	1.3%	0.0%	0.3%	0.1%	0.9%
71342	42	8,142	+0.52%	68.1%	14.1%	1.5%	2.3%	0.1%	0.6%	0.3%	13.1%
71331	5	979	+0.51%	96.0%	0.5%	0.4%	0.9%	0.0%	1.0%	0.0%	1.1%
70819	26	5,130	+0.51%	22.8%	53.4%	3.9%	0.8%	0.0%	0.8%	0.7%	17.5%
71008	3	595	+0.51%	64.9%	32.6%	0.5%	0.3%	0.2%	0.7%	0.2%	0.7%
70118	181	35,816	+0.51%	51.1%	29.7%	3.0%	0.8%	0.1%	1.0%	0.7%	13.5%
70380	108	21,187	+0.51%	61.3%	16.6%	2.6%	2.5%	0.1%	0.7%	0.5%	15.6%
70375	1	199	+0.51%	94.9%	1.0%	0.0%	0.5%	0.0%	0.0%	0.0%	3.5%
71346	13	2,611	+0.50%	59.8%	29.9%	0.8%	3.0%	0.0%	0.8%	0.7%	4.9%
71033	18	3,599	+0.50%	61.4%	27.2%	1.3%	2.7%	0.1%	1.9%	0.6%	4.9%
70403	149	29,886	+0.50%	54.8%	35.3%	1.3%	1.4%	0.0%	0.8%	0.4%	5.9%
70814	70	14,131	+0.50%	8.0%	84.5%	1.3%	0.2%	0.0%	0.3%	0.9%	4.7%
71354	8	1,595	+0.50%	95.8%	1.3%	0.1%	1.9%	0.0%	0.0%	0.1%	0.8%
71024	6	1,213	+0.50%	64.6%	27.8%	0.3%	2.9%	0.0%	0.5%	0.0%	3.9%
71237	5	1,033	+0.49%	65.4%	28.5%	0.3%	1.8%	0.0%	0.8%	0.0%	3.2%
70554	27	5,567	+0.49%	61.4%	33.1%	0.5%	0.8%	0.1%	0.5%	0.7%	2.8%
71360	177	36,203	+0.49%	70.1%	20.4%	1.8%	2.6%	0.1%	1.1%	0.6%	3.3%
71367	6	1,228	+0.49%	86.6%	7.4%	0.4%	1.1%	0.0%	1.4%	0.2%	2.8%
71292	109	22,883	+0.48%	73.7%	15.1%	0.7%	2.5%	0.0%	1.2%	0.4%	6.3%
70544	52	10,827	+0.48%	37.9%	53.9%	0.8%	2.9%	0.0%	0.5%	0.6%	3.2%
71049	15	3,123	+0.48%	67.9%	25.0%	0.1%	2.2%	0.0%	1.1%	0.6%	3.0%
70085	22	4,598	+0.48%	68.1%	10.6%	0.7%	2.0%	0.0%	1.1%	0.3%	17.2%
71261	7	1,456	+0.48%	58.5%	37.1%	0.1%	1.4%	0.1%	0.6%	0.9%	1.3%
70721	3	646	+0.47%	8.7%	88.0%	0.0%	0.5%	0.0%	1.4%	0.6%	0.8%
70121	54	11,577	+0.47%	60.6%	21.1%	1.8%	1.3%	0.1%	1.2%	0.5%	13.5%
70806	130	28,028	+0.47%	44.1%	46.5%	1.4%	0.8%	0.0%	0.7%	0.6%	5.7%
71447	6	1,302	+0.46%	71.3%	13.6%	0.8%	9.8%	0.1%	1.4%	0.5%	2.5%
70524	1	218	+0.46%	47.0%	46.1%	0.5%	0.0%	0.0%	1.4%	1.4%	3.7%
71045	3	659	+0.46%	88.7%	7.5%	1.1%	1.1%	0.2%	0.2%	0.0%	1.4%
70444	44	9,711	+0.46%	58.2%	37.3%	0.4%	1.0%	0.0%	0.6%	0.5%	2.0%
70570	178	38,924	+0.46%	34.8%	60.1%	0.7%	0.5%	0.0%	0.6%	0.8%	2.5%
71119	48	10,772	+0.45%	27.1%	66.1%	0.9%	0.8%	0.0%	0.7%	0.8%	3.6%
70129	49	10,933	+0.45%	7.7%	45.6%	28.0%	0.3%	0.0%	0.5%	0.8%	17.1%
70643	1	225	+0.45%	92.0%	0.9%	0.0%	0.9%	0.0%	0.0%	0.4%	5.8%
71277	7	1,571	+0.45%	65.9%	26.8%	0.3%	1.5%	0.2%	1.0%	0.5%	3.8%
70560	174	39,631	+0.44%	49.5%	38.8%	3.4%	0.8%	0.0%	0.6%	0.6%	6.1%
70420	35	8,065	+0.44%	80.1%	5.8%	1.0%	2.0%	0.1%	1.8%	0.4%	8.7%
70392	37	8,443	+0.44%	53.7%	35.9%	0.9%	2.3%	0.1%	1.1%	0.7%	5.2%
70815	129	29,505	+0.44%	29.8%	49.5%	8.1%	0.6%	0.0%	0.7%	0.5%	10.6%
70650	2	454	+0.44%	91.6%	3.5%	1.8%	0.4%	0.0%	0.2%	0.9%	1.5%
70669	43	9,873	+0.44%	77.8%	13.2%	1.1%	1.5%	0.0%	0.7%	0.3%	5.3%
70364	131	29,690	+0.44%	67.7%	15.6%	1.2%	6.0%	0.1%	0.7%	0.8%	7.9%
70345	40	9,159	+0.44%	79.8%	1.8%	1.9%	6.4%	0.0%	0.6%	0.3%	9.1%

Zip Code Tabulation Area	Pop. Change	Adj. Pop.	Change (%)	W%	B+B& W%	AS+A S&W %	AI+AI &W%	PI+P I&W %	OTH+ OTH& W%	OTH MUL TI%	H%
70711	23	5,266	+0.44%	83.3%	8.4%	0.4%	1.9%	0.1%	0.7%	0.2%	5.1%
70549	17	3,853	+0.44%	85.0%	10.6%	0.4%	1.1%	0.0%	0.5%	0.6%	1.8%
71007	4	912	+0.44%	67.3%	27.4%	0.2%	1.3%	0.0%	2.2%	0.2%	1.3%
70087	32	7,276	+0.44%	39.9%	42.0%	2.5%	0.9%	0.0%	0.8%	0.5%	13.4%
70522	1	235	+0.43%	51.7%	37.6%	0.4%	6.8%	0.0%	1.7%	0.0%	1.7%
70532	11	2,571	+0.43%	55.9%	25.2%	0.8%	11.2%	0.0%	1.1%	2.5%	3.4%
71441	3	704	+0.43%	88.4%	5.8%	0.6%	2.6%	0.4%	0.9%	0.3%	1.0%
70131	117	27,590	+0.43%	22.7%	63.5%	4.2%	0.5%	0.0%	1.0%	0.9%	7.2%
71251	35	8,321	+0.42%	57.4%	34.9%	1.5%	1.0%	0.1%	0.7%	0.4%	4.0%
70458	157	37,955	+0.42%	65.7%	20.2%	2.5%	1.8%	0.1%	1.3%	0.9%	7.5%
70663	124	29,449	+0.42%	81.2%	8.2%	1.1%	1.9%	0.1%	0.8%	0.4%	6.3%
70056	173	41,671	+0.42%	31.2%	37.7%	6.9%	0.6%	0.1%	1.0%	0.8%	21.7%
71112	138	32,699	+0.42%	54.8%	27.2%	2.7%	2.1%	0.2%	1.0%	1.0%	10.8%
70576	6	1,428	+0.42%	67.9%	7.9%	0.6%	1.0%	0.0%	0.5%	0.0%	22.1%
70726	249	59,835	+0.42%	74.0%	12.3%	1.6%	1.8%	0.1%	1.2%	0.3%	8.8%
70647	48	11,434	+0.42%	72.7%	20.3%	0.8%	1.7%	0.1%	0.8%	0.7%	2.9%
71433	17	4,166	+0.41%	74.8%	9.0%	2.0%	3.6%	0.0%	0.9%	0.3%	9.3%
70049	8	1,983	+0.41%	4.7%	93.2%	0.1%	0.1%	0.1%	0.2%	1.1%	0.7%
71351	-45	11,023	-0.41%	62.9%	30.8%	0.6%	2.3%	0.0%	0.7%	1.1%	1.5%
70607	123	30,462	+0.41%	46.7%	41.0%	2.5%	1.2%	0.1%	1.0%	0.9%	6.6%
70820	97	23,567	+0.41%	48.0%	28.6%	7.6%	1.0%	0.1%	0.8%	0.8%	13.2%
70546	66	16,343	+0.41%	75.2%	19.4%	0.6%	1.1%	0.1%	0.7%	0.6%	2.3%
70719	18	4,414	+0.41%	57.8%	34.2%	0.7%	1.1%	0.0%	0.6%	0.3%	5.4%
71067	14	3,449	+0.41%	61.6%	22.2%	0.9%	3.2%	0.1%	1.4%	0.3%	10.3%
70662	2	487	+0.41%	82.3%	3.9%	1.0%	5.6%	0.2%	2.1%	1.2%	3.7%
70433	-171	41,252	-0.41%	75.9%	10.0%	2.1%	1.5%	0.1%	1.3%	0.5%	8.7%
70655	10	2,424	+0.41%	59.5%	31.1%	0.8%	2.7%	0.1%	1.0%	0.5%	4.3%
71416	3	727	+0.41%	54.3%	27.1%	0.3%	5.1%	0.0%	7.6%	2.8%	2.9%
71466	2	505	+0.40%	95.6%	1.0%	0.2%	2.2%	0.0%	0.4%	0.0%	0.6%
71409	25	6,287	+0.40%	72.3%	20.1%	0.8%	2.8%	0.0%	0.6%	0.4%	3.1%
71037	85	21,554	+0.40%	73.5%	14.6%	1.2%	2.8%	0.1%	1.2%	0.5%	6.1%
70455	8	2,025	+0.40%	76.5%	8.7%	1.4%	2.7%	0.0%	1.9%	0.5%	8.3%
70079	12	2,982	+0.40%	81.9%	7.8%	0.9%	2.0%	0.0%	1.1%	0.4%	6.0%
71235	17	4,326	+0.39%	80.4%	14.2%	0.4%	2.0%	0.0%	0.3%	0.3%	2.4%
70461	119	30,859	+0.39%	57.3%	28.2%	3.4%	1.6%	0.1%	1.3%	0.8%	7.4%
70644	1	255	+0.39%	89.4%	0.4%	0.4%	5.5%	0.0%	2.4%	0.8%	1.2%
70548	39	10,043	+0.39%	85.2%	9.0%	1.0%	0.9%	0.1%	0.7%	0.3%	2.9%
70535	68	17,360	+0.39%	70.1%	24.7%	0.8%	0.8%	0.1%	0.4%	0.5%	2.6%
71462	6	1,605	+0.38%	50.6%	2.1%	0.4%	39.5%	0.3%	0.4%	1.2%	5.6%
70057	-16	4,185	-0.38%	38.1%	55.3%	0.6%	0.8%	0.0%	0.3%	0.5%	4.5%
70515	13	3,420	+0.38%	71.9%	12.7%	1.6%	1.1%	0.0%	0.5%	0.5%	11.6%
71201	81	21,646	+0.38%	54.0%	38.2%	3.0%	1.0%	0.0%	0.7%	0.4%	2.7%
71456	4	1,062	+0.38%	39.5%	49.7%	0.4%	0.9%	0.0%	5.1%	2.0%	2.4%

Zip Code Tabulation Area	Pop. Change	Adj. Pop.	Change (%)	W%	B+B& W%	AS+A S&W %	AI+AI &W%	PI+P I&W %	OTH+ OTH& W%	OTH MUL TI%	H%
70435	79	20,907	+0.38%	79.7%	8.4%	0.9%	2.2%	0.1%	1.0%	0.4%	7.3%
71023	12	3,247	+0.37%	80.6%	11.8%	0.9%	2.9%	0.0%	0.6%	0.2%	2.9%
70003	149	40,217	+0.37%	60.9%	12.2%	4.0%	1.1%	0.0%	1.5%	0.5%	19.9%
71111	164	44,640	+0.37%	55.7%	29.5%	3.3%	1.5%	0.1%	0.8%	0.7%	8.4%
70437	28	7,603	+0.37%	81.1%	8.6%	0.5%	1.5%	0.1%	1.3%	0.4%	6.7%
70510	88	24,162	+0.37%	64.7%	24.7%	3.9%	0.9%	0.0%	0.6%	0.3%	4.8%
70578	60	16,261	+0.37%	73.7%	21.3%	0.5%	1.0%	0.0%	0.7%	0.3%	2.4%
70360	103	28,117	+0.37%	70.4%	16.6%	2.1%	4.1%	0.1%	0.6%	0.7%	5.5%
70749	5	1,344	+0.37%	79.3%	13.8%	0.4%	0.9%	0.0%	1.0%	0.6%	4.0%
71118	89	24,671	+0.36%	37.1%	56.0%	1.3%	1.2%	0.1%	0.7%	0.5%	3.2%
71341	11	3,107	+0.36%	83.9%	10.8%	0.4%	1.6%	0.0%	0.9%	0.3%	2.2%
70374	24	6,723	+0.36%	84.5%	4.7%	0.6%	3.7%	0.0%	0.5%	0.2%	5.8%
70039	10	2,810	+0.36%	32.5%	58.3%	1.0%	1.0%	0.0%	0.5%	0.1%	6.6%
70529	43	11,885	+0.36%	68.4%	18.6%	0.7%	1.3%	0.0%	0.7%	0.7%	9.5%
70517	95	26,529	+0.36%	62.9%	29.9%	1.1%	1.0%	0.0%	0.7%	0.4%	4.0%
71032	7	2,003	+0.35%	63.1%	30.9%	0.2%	1.5%	0.0%	1.0%	0.5%	2.9%
71333	2	578	+0.35%	61.3%	29.0%	0.5%	3.3%	0.0%	1.6%	0.9%	3.5%
71245	17	4,866	+0.35%	0.5%	98.0%	0.1%	0.2%	0.0%	0.1%	0.6%	0.6%
70052	11	3,173	+0.35%	50.9%	45.3%	0.4%	0.3%	0.0%	0.7%	0.7%	1.5%
70651	1	288	+0.35%	92.3%	1.0%	0.0%	4.2%	0.0%	0.7%	0.3%	1.4%
71256	2	570	+0.35%	47.9%	47.0%	0.5%	1.1%	0.0%	0.0%	1.2%	2.3%
70639	2	577	+0.35%	86.8%	0.9%	0.7%	5.9%	0.2%	0.5%	0.5%	4.5%
70030	15	4,380	+0.34%	85.6%	7.9%	0.3%	2.6%	0.0%	0.5%	0.2%	2.8%
71275	8	2,375	+0.34%	53.6%	37.3%	0.1%	2.1%	0.0%	1.0%	0.5%	5.4%
70339	18	5,350	+0.34%	94.8%	0.5%	0.2%	1.0%	0.0%	0.2%	0.3%	3.0%
71467	28	8,260	+0.34%	66.6%	16.3%	0.7%	2.5%	0.1%	0.6%	0.3%	13.0%
70770	13	3,829	+0.34%	88.5%	4.4%	0.9%	1.9%	0.1%	1.1%	0.3%	2.8%
70065	173	51,657	+0.34%	43.5%	17.3%	6.1%	0.8%	0.0%	1.3%	0.5%	30.5%
71424	4	1,223	+0.33%	90.5%	1.6%	0.2%	3.4%	0.0%	0.9%	0.3%	3.0%
70395	16	4,859	+0.33%	73.8%	14.5%	0.7%	4.4%	0.1%	0.7%	0.6%	5.3%
70552	4	1,230	+0.33%	79.9%	13.6%	0.2%	1.3%	0.1%	0.9%	0.2%	3.8%
70633	30	9,019	+0.33%	79.2%	15.2%	0.5%	2.2%	0.1%	0.5%	0.2%	2.1%
70342	16	4,822	+0.33%	75.4%	12.0%	1.0%	2.5%	0.1%	0.3%	0.4%	8.2%
70730	12	3,625	+0.33%	58.4%	37.6%	0.4%	1.0%	0.0%	0.8%	0.5%	1.2%
70653	10	3,015	+0.33%	85.3%	6.4%	0.3%	4.2%	0.0%	0.7%	0.7%	2.5%
70715	3	902	+0.33%	50.2%	40.5%	0.0%	0.7%	0.1%	0.6%	0.7%	7.3%
70454	104	32,258	+0.32%	74.3%	15.9%	1.0%	1.9%	0.1%	1.2%	0.4%	5.2%
71405	18	5,670	+0.32%	77.8%	12.0%	1.0%	3.2%	0.1%	1.4%	0.4%	4.2%
71264	3	950	+0.32%	74.2%	19.0%	0.1%	4.0%	0.0%	1.2%	0.5%	1.0%
71078	22	6,980	+0.32%	82.8%	7.8%	0.6%	3.8%	0.0%	1.2%	0.2%	3.5%
70075	17	5,399	+0.32%	65.4%	14.8%	3.4%	1.8%	0.0%	1.2%	0.5%	13.0%
70645	3	929	+0.32%	94.9%	0.3%	0.5%	0.8%	0.0%	0.6%	0.4%	2.4%
71016	6	1,935	+0.31%	79.3%	14.3%	0.8%	3.0%	0.1%	1.0%	0.2%	1.2%

Zip Code Tabulation Area	Pop. Change	Adj. Pop.	Change (%)	W%	B+B& W%	AS+A S&W %	AI+AI &W%	PI+P I&W %	OTH+ OTH& W%	OTH MUL TI%	H%
71358	3	970	+0.31%	40.8%	53.9%	0.5%	0.6%	0.0%	1.0%	1.3%	1.8%
71001	13	4,172	+0.31%	34.7%	60.5%	0.5%	0.9%	0.1%	0.7%	0.3%	2.4%
70431	16	5,189	+0.31%	90.7%	0.8%	0.4%	1.3%	0.1%	1.5%	0.3%	4.9%
71438	5	1,600	+0.31%	91.2%	1.0%	0.7%	3.9%	0.1%	0.6%	0.3%	2.3%
70772	2	637	+0.31%	58.3%	38.9%	0.6%	0.8%	0.0%	0.3%	0.9%	0.2%
71203	117	37,555	+0.31%	43.1%	50.1%	2.3%	1.1%	0.0%	0.6%	0.5%	2.3%
71483	30	9,974	+0.30%	54.6%	31.4%	1.7%	1.5%	0.2%	0.4%	0.5%	9.7%
71234	13	4,311	+0.30%	89.8%	3.9%	0.3%	2.0%	0.0%	0.8%	0.2%	3.0%
71429	9	2,997	+0.30%	80.9%	11.8%	0.3%	3.7%	0.1%	0.7%	0.4%	2.1%
70551	1	337	+0.30%	50.3%	47.6%	0.0%	0.3%	0.0%	0.6%	0.3%	0.9%
71325	3	1,011	+0.30%	51.9%	42.9%	0.1%	1.0%	0.0%	1.0%	1.2%	2.0%
71263	21	7,124	+0.30%	83.1%	11.4%	0.1%	1.5%	0.0%	0.3%	0.2%	3.4%
71291	101	34,771	+0.29%	77.1%	14.0%	1.8%	2.0%	0.0%	0.9%	0.3%	3.8%
71419	6	2,055	+0.29%	82.5%	3.5%	0.1%	10.2%	0.1%	1.1%	0.2%	2.4%
71006	45	15,313	+0.29%	78.5%	11.3%	1.6%	2.6%	0.2%	1.0%	0.5%	4.4%
71072	4	1,387	+0.29%	89.1%	6.1%	0.4%	2.0%	0.0%	1.2%	0.2%	1.0%
71430	7	2,430	+0.29%	64.9%	2.6%	1.9%	1.7%	0.0%	0.2%	0.2%	28.4%
70630	4	1,374	+0.29%	87.3%	3.4%	0.7%	1.4%	0.0%	1.2%	0.5%	5.5%
71328	22	7,913	+0.28%	91.9%	1.0%	0.6%	3.4%	0.0%	1.0%	0.2%	1.9%
70446	20	7,275	+0.28%	80.2%	11.7%	0.3%	2.1%	0.0%	0.9%	0.3%	4.5%
70584	21	7,492	+0.28%	62.6%	30.4%	0.4%	1.1%	0.0%	0.6%	0.5%	4.4%
70343	14	5,073	+0.28%	80.8%	2.3%	0.6%	10.6%	0.0%	0.7%	0.3%	4.7%
70043	61	21,657	+0.28%	50.8%	27.0%	3.6%	1.3%	0.1%	1.5%	0.7%	15.0%
70036	3	1,060	+0.28%	84.3%	4.7%	2.3%	3.1%	0.0%	1.0%	0.7%	3.9%
70816	124	45,356	+0.27%	37.0%	41.3%	5.6%	0.8%	0.0%	0.9%	0.7%	13.5%
70652	7	2,564	+0.27%	92.2%	0.9%	0.5%	2.9%	0.1%	0.6%	0.1%	2.5%
71226	4	1,497	+0.27%	69.9%	25.4%	0.5%	2.1%	0.0%	0.5%	0.5%	1.1%
71060	8	2,927	+0.27%	79.5%	8.2%	0.6%	4.4%	0.4%	2.0%	0.2%	4.7%
70533	20	7,302	+0.27%	86.6%	5.7%	1.8%	1.2%	0.0%	0.5%	0.4%	3.9%
71353	4	1,504	+0.27%	67.0%	30.2%	0.3%	0.5%	0.2%	0.5%	0.4%	0.9%
70559	6	2,256	+0.27%	95.3%	2.2%	0.2%	0.7%	0.0%	0.4%	0.0%	1.2%
71369	6	2,314	+0.26%	51.4%	44.7%	0.6%	1.0%	0.0%	0.2%	0.8%	1.3%
70032	12	4,545	+0.26%	60.4%	16.5%	4.0%	1.8%	0.0%	2.1%	0.9%	14.2%
71225	21	8,200	+0.26%	88.2%	5.3%	0.6%	2.6%	0.0%	1.4%	0.1%	1.8%
70737	123	47,455	+0.26%	59.1%	26.9%	1.2%	1.1%	0.1%	0.8%	0.5%	10.5%
70563	49	19,194	+0.26%	72.5%	18.2%	1.9%	1.1%	0.0%	0.6%	0.4%	5.3%
71220	55	21,209	+0.26%	44.9%	50.7%	0.6%	1.4%	0.0%	0.4%	0.6%	1.4%
71222	8	3,058	+0.26%	54.0%	33.3%	0.4%	1.0%	0.1%	0.7%	0.3%	10.3%
70589	9	3,473	+0.26%	68.4%	27.8%	0.2%	0.5%	0.0%	0.7%	0.5%	1.7%
71366	4	1,583	+0.25%	46.2%	50.6%	0.4%	0.5%	0.0%	0.4%	0.5%	1.3%
70001	102	40,170	+0.25%	60.5%	15.1%	3.3%	1.0%	0.1%	1.5%	0.6%	18.0%
70706	56	22,532	+0.25%	84.5%	6.4%	0.8%	2.4%	0.1%	1.1%	0.3%	4.4%
70525	33	13,265	+0.25%	71.9%	21.5%	0.3%	0.9%	0.0%	0.6%	0.5%	4.3%

Zip Code Tabulation Area	Pop. Change	Adj. Pop.	Change (%)	W%	B+B& W%	AS+A S&W %	AI+AI &W%	PI+P I&W %	OTH+ OTH& W%	OTH MUL TI%	H%
70070	34	13,803	+0.25%	71.0%	16.4%	1.6%	1.6%	0.0%	1.0%	0.5%	7.8%
70068	84	33,297	+0.25%	33.0%	54.5%	1.1%	0.9%	0.0%	0.8%	0.6%	9.0%
70520	51	20,068	+0.25%	58.9%	33.2%	0.9%	0.9%	0.0%	0.8%	0.6%	4.7%
70507	44	17,835	+0.25%	45.0%	45.4%	1.2%	0.9%	0.0%	0.8%	0.8%	5.9%
70740	3	1,184	+0.25%	80.0%	16.3%	0.3%	1.6%	0.0%	0.3%	0.2%	1.4%
70591	13	5,542	+0.24%	79.2%	16.5%	0.4%	0.9%	0.0%	0.6%	0.4%	2.0%
70346	-25	10,317	-0.24%	27.6%	67.5%	0.2%	0.3%	0.0%	0.3%	0.4%	3.8%
70123	65	27,411	+0.24%	71.2%	13.1%	3.3%	1.2%	0.0%	1.1%	0.4%	9.6%
70583	29	12,010	+0.24%	65.0%	18.4%	0.9%	1.4%	0.1%	0.7%	0.7%	12.8%
70646	2	839	+0.24%	93.5%	1.7%	0.1%	1.1%	0.0%	0.4%	0.1%	3.1%
71286	1	444	+0.23%	78.6%	15.8%	0.0%	0.5%	0.0%	1.1%	0.5%	3.6%
70725	4	1,747	+0.23%	23.9%	71.8%	0.2%	0.6%	0.1%	0.3%	0.5%	2.6%
71003	2	859	+0.23%	70.0%	25.7%	0.6%	1.1%	0.0%	0.7%	0.1%	1.9%
70542	7	3,070	+0.23%	91.1%	6.2%	0.0%	0.3%	0.1%	0.5%	0.3%	1.5%
70531	3	1,376	+0.22%	96.6%	0.2%	0.1%	0.7%	0.0%	0.9%	0.0%	1.5%
70071	7	3,212	+0.22%	44.8%	52.6%	0.3%	0.2%	0.0%	0.5%	0.2%	1.3%
70086	4	1,786	+0.22%	7.2%	89.5%	0.2%	0.2%	0.0%	0.1%	0.7%	2.1%
70448	57	25,727	+0.22%	81.1%	4.4%	2.0%	1.6%	0.1%	1.6%	0.4%	8.8%
70002	44	19,901	+0.22%	54.8%	14.7%	6.9%	0.7%	0.0%	1.1%	0.8%	21.0%
70543	8	3,891	+0.21%	91.4%	3.8%	0.1%	0.7%	0.1%	0.4%	0.2%	3.3%
70777	9	4,396	+0.21%	69.6%	25.2%	0.4%	1.8%	0.0%	0.8%	0.5%	1.7%
70810	88	42,560	+0.21%	54.5%	28.8%	5.8%	0.9%	0.0%	0.9%	0.6%	8.6%
71280	10	4,718	+0.21%	76.7%	16.2%	1.0%	1.6%	0.1%	0.9%	0.6%	3.0%
70090	15	7,167	+0.21%	40.5%	56.1%	0.1%	0.5%	0.0%	0.5%	0.6%	1.9%
70006	35	16,575	+0.21%	55.8%	9.3%	7.3%	0.8%	0.0%	1.1%	0.4%	25.3%
70067	6	2,829	+0.21%	81.9%	1.6%	4.3%	5.3%	0.1%	0.6%	0.8%	5.3%
70778	6	2,956	+0.20%	55.8%	33.0%	0.9%	1.1%	0.0%	0.8%	0.3%	8.0%
70037	33	16,295	+0.20%	68.6%	12.2%	3.8%	2.1%	0.3%	1.2%	0.6%	11.1%
70047	26	12,809	+0.20%	66.2%	20.6%	1.7%	1.3%	0.1%	0.9%	0.5%	8.7%
70818	21	10,513	+0.20%	71.0%	19.8%	1.3%	1.3%	0.0%	1.1%	0.2%	5.2%
70512	20	10,166	+0.20%	78.8%	17.6%	0.3%	0.6%	0.0%	0.5%	0.3%	1.8%
71031	2	997	+0.20%	92.7%	2.0%	0.0%	1.9%	0.1%	0.9%	0.1%	2.3%
70665	25	12,557	+0.20%	85.5%	4.7%	2.3%	1.5%	0.1%	0.8%	0.3%	4.8%
70516	3	1,582	+0.19%	81.8%	11.1%	0.6%	0.9%	0.0%	0.5%	0.4%	4.6%
70053	32	16,541	+0.19%	39.0%	35.7%	2.7%	1.2%	0.1%	1.0%	0.7%	19.6%
70734	16	8,400	+0.19%	59.7%	27.1%	2.4%	1.4%	0.0%	0.8%	0.6%	8.1%
70736	1	514	+0.19%	62.2%	31.0%	0.2%	0.0%	0.2%	2.9%	0.4%	3.1%
71004	1	527	+0.19%	55.3%	40.5%	0.0%	0.4%	0.0%	0.2%	0.4%	3.2%
71417	-9	4,682	-0.19%	65.0%	30.3%	0.2%	1.5%	0.0%	0.9%	0.4%	1.8%
70611	43	22,500	+0.19%	82.7%	8.1%	1.5%	1.8%	0.0%	1.1%	0.4%	4.3%
71019	13	7,375	+0.18%	54.8%	39.4%	0.0%	1.9%	0.0%	0.7%	0.6%	2.5%
70732	2	1,112	+0.18%	80.6%	16.8%	0.3%	0.5%	0.0%	0.5%	0.3%	1.1%
70528	4	2,259	+0.18%	77.4%	13.7%	0.1%	1.8%	0.1%	0.7%	0.5%	5.7%

Zip Code Tabulation Area	Pop. Change	Adj. Pop.	Change (%)	W%	B+B& W%	AS+A S&W %	AI+AI &W%	PI+P I&W %	OTH+ OTH& W%	OTH MUL TI%	H%
70739	22	12,912	+0.17%	81.4%	9.5%	1.2%	1.8%	0.0%	1.2%	0.3%	4.7%
70582	32	19,120	+0.17%	61.1%	34.5%	1.0%	0.6%	0.0%	0.5%	0.3%	2.1%
70755	3	1,718	+0.17%	84.7%	9.5%	0.3%	1.2%	0.0%	0.6%	0.3%	3.4%
71238	5	2,929	+0.17%	87.8%	5.6%	0.4%	2.6%	0.0%	1.0%	0.4%	2.3%
71046	2	1,185	+0.17%	62.6%	28.1%	0.1%	2.5%	0.0%	1.4%	1.0%	4.2%
70710	11	6,760	+0.16%	50.8%	40.8%	1.8%	1.2%	0.2%	0.7%	0.4%	4.1%
71485	4	2,549	+0.16%	85.6%	7.8%	0.9%	2.3%	0.0%	0.7%	0.4%	2.4%
70808	51	32,561	+0.16%	70.3%	17.1%	4.2%	1.0%	0.0%	1.0%	0.6%	5.8%
71355	4	2,541	+0.16%	74.8%	19.6%	0.5%	1.3%	0.1%	0.6%	1.1%	2.0%
71105	35	21,343	+0.16%	69.6%	18.1%	3.5%	2.0%	0.2%	1.0%	0.7%	4.9%
70774	16	9,916	+0.16%	90.8%	1.7%	0.3%	1.8%	0.0%	0.7%	0.2%	4.5%
71227	6	4,133	+0.15%	84.2%	8.1%	0.6%	2.2%	0.1%	0.8%	0.4%	3.6%
70763	6	4,135	+0.15%	80.3%	16.5%	0.1%	0.6%	0.0%	0.5%	0.2%	1.7%
70791	-43	29,389	-0.15%	48.4%	44.9%	1.4%	1.2%	0.0%	0.9%	0.4%	2.8%
70506	56	39,857	+0.14%	59.6%	24.2%	3.9%	1.1%	0.0%	0.9%	0.6%	9.7%
70501	39	28,760	+0.14%	21.2%	73.1%	0.6%	0.5%	0.0%	0.5%	0.9%	3.2%
70577	6	4,430	+0.14%	77.2%	18.7%	0.2%	0.8%	0.0%	0.7%	0.5%	1.9%
70541	1	734	+0.14%	31.2%	65.5%	0.0%	0.3%	0.0%	0.0%	0.1%	2.9%
71362	3	2,224	+0.14%	91.3%	3.5%	0.3%	1.5%	0.0%	0.5%	0.6%	2.4%
70769	64	46,735	+0.14%	71.6%	15.0%	2.9%	1.3%	0.1%	0.9%	0.4%	7.9%
70447	24	17,144	+0.14%	83.9%	4.2%	1.6%	1.5%	0.1%	1.3%	0.2%	7.2%
71270	45	31,558	+0.14%	52.9%	38.4%	2.4%	1.2%	0.0%	0.6%	0.4%	4.1%
71469	4	2,957	+0.14%	83.3%	7.6%	0.5%	3.6%	0.0%	0.8%	0.5%	3.6%
70518	21	16,704	+0.13%	71.6%	16.4%	3.7%	1.3%	0.1%	1.0%	0.6%	5.3%
71457	32	25,538	+0.13%	42.4%	49.8%	0.6%	1.5%	0.1%	1.2%	0.9%	3.5%
70752	1	764	+0.13%	75.1%	15.1%	0.1%	0.9%	0.0%	1.6%	0.9%	6.3%
70005	31	25,462	+0.12%	76.2%	3.9%	3.2%	0.7%	0.0%	1.3%	0.4%	14.3%
70555	11	8,936	+0.12%	83.9%	8.1%	2.1%	0.9%	0.1%	0.8%	0.2%	3.9%
70605	47	39,950	+0.12%	73.8%	11.5%	5.3%	1.3%	0.2%	1.0%	0.5%	6.4%
70441	6	5,012	+0.12%	33.4%	61.8%	0.2%	1.2%	0.0%	0.8%	0.6%	2.0%
70592	31	29,006	+0.11%	78.6%	10.0%	3.1%	1.4%	0.1%	0.8%	0.4%	5.6%
71449	-10	9,344	-0.11%	68.0%	22.4%	0.5%	5.1%	0.1%	0.8%	0.6%	2.5%
70581	1	935	+0.11%	79.0%	15.0%	0.9%	0.7%	0.0%	1.1%	0.2%	3.1%
70390	7	6,600	+0.11%	52.4%	41.8%	0.3%	0.9%	0.0%	0.3%	0.4%	3.9%
70508	46	40,389	+0.11%	74.5%	13.1%	3.4%	1.1%	0.0%	0.9%	0.6%	6.4%
71450	1	930	+0.11%	84.3%	5.5%	0.5%	3.8%	0.0%	0.9%	1.2%	3.9%
70538	-13	12,591	-0.10%	44.1%	47.6%	0.8%	2.0%	0.0%	0.8%	0.6%	4.1%
70785	23	22,592	+0.10%	85.7%	5.4%	1.0%	2.0%	0.1%	1.2%	0.3%	4.4%
70729	1	968	+0.10%	66.7%	25.2%	0.3%	1.2%	0.1%	0.5%	1.7%	4.2%
71373	-6	6,694	-0.09%	67.2%	26.7%	0.8%	1.4%	0.0%	0.5%	0.3%	3.1%
71115	14	15,450	+0.09%	65.8%	20.8%	6.7%	1.4%	0.2%	0.8%	0.5%	3.9%
70809	19	25,321	+0.08%	65.9%	19.5%	5.2%	1.1%	0.0%	0.9%	0.6%	6.8%
70471	19	23,353	+0.08%	83.2%	3.1%	2.8%	1.4%	0.1%	1.1%	0.3%	8.0%

Zip Code Tabulation Area	Pop. Change	Adj. Pop.	Change (%)	W%	B+B& W%	AS+A S&W %	AI+AI &W%	PI+P I&W %	OTH+ OTH& W%	OTH MUL TI%	H%
70817	28	35,053	+0.08%	67.5%	18.9%	4.8%	1.1%	0.1%	1.0%	0.5%	6.2%
70124	17	22,794	+0.07%	80.1%	4.1%	4.0%	0.9%	0.0%	1.5%	0.5%	9.1%
70363	15	25,334	+0.06%	47.4%	27.9%	1.7%	11.0%	0.1%	0.5%	1.2%	10.2%
70301	27	46,688	+0.06%	66.8%	25.5%	0.9%	1.7%	0.0%	0.5%	0.4%	4.2%
70503	17	27,514	+0.06%	78.0%	8.7%	5.0%	1.2%	0.1%	0.9%	0.4%	5.7%
71439	1	1,713	+0.06%	94.2%	1.1%	0.2%	2.1%	0.2%	0.5%	0.4%	1.2%
71110	1	1,952	+0.05%	57.0%	14.5%	4.5%	2.4%	0.8%	3.0%	2.2%	15.6%
70394	-7	13,925	-0.05%	70.2%	21.8%	0.5%	2.5%	0.1%	0.5%	0.4%	4.1%
71303	11	22,808	+0.05%	55.3%	33.8%	3.8%	1.1%	0.1%	0.9%	0.6%	4.3%
71268	1	2,738	+0.04%	84.4%	11.2%	0.5%	1.4%	0.0%	1.0%	0.1%	1.4%
71107	-3	31,308	-0.01%	43.7%	49.7%	0.5%	1.7%	0.1%	0.8%	0.5%	3.0%
71459	1	10,087	+0.01%	54.1%	17.5%	3.9%	1.7%	1.7%	1.2%	1.3%	18.6%
70163	1	1	+0.00%	0.0%	0.0%	0.0%	0.0%	0.0%	0.0%	0.0%	0.0%
70148	0	1,603	+0.00%	40.2%	43.9%	5.3%	1.6%	0.0%	1.6%	0.2%	7.1%
70139	1	1	+0.00%	0.0%	0.0%	0.0%	0.0%	0.0%	0.0%	0.0%	0.0%
70803	0	3,587	+0.00%	73.7%	15.6%	4.6%	0.4%	0.1%	0.1%	0.1%	5.5%
71749	0	344	+0.00%	55.5%	37.8%	0.3%	0.3%	0.0%	2.3%	0.3%	3.5%
71452	0	42	+0.00%	31.0%	31.0%	0.0%	2.4%	0.0%	28.6%	7.1%	0.0%
71497	0	1,509	+0.00%	47.7%	25.3%	2.9%	0.6%	0.1%	0.5%	1.7%	21.1%
71455	0	178	+0.00%	78.7%	7.3%	1.1%	6.7%	0.0%	2.2%	0.0%	3.9%
71242	0	23	+0.00%	87.0%	0.0%	0.0%	0.0%	0.0%	0.0%	0.0%	13.0%
70813	0	1,753	+0.00%	1.4%	96.1%	0.0%	0.0%	0.0%	1.1%	0.0%	1.4%
71209	0	1,091	+0.00%	57.7%	34.3%	3.1%	1.3%	0.1%	0.0%	0.4%	3.2%
71212	0	10	+0.00%	30.0%	50.0%	10.0%	10.0%	0.0%	0.0%	0.0%	0.0%
71233	0	254	+0.00%	84.3%	10.6%	0.0%	0.0%	0.0%	1.6%	0.0%	3.5%
71066	0	38	+0.00%	5.3%	84.2%	2.6%	0.0%	0.0%	0.0%	0.0%	7.9%
70825	10	10	+0.00%	0.0%	0.0%	0.0%	0.0%	0.0%	0.0%	0.0%	0.0%
71048	0	106	+0.00%	46.2%	51.9%	0.0%	0.9%	0.0%	0.0%	0.0%	0.9%
70836	0	535	+0.00%	59.1%	20.0%	9.7%	0.2%	0.0%	0.2%	1.1%	9.7%
71002	0	194	+0.00%	85.1%	9.3%	0.0%	1.0%	1.5%	0.0%	0.0%	3.1%
71468	0	536	+0.00%	78.7%	8.2%	0.0%	5.8%	0.0%	1.3%	0.7%	5.2%
71034	0	278	+0.00%	72.7%	22.3%	0.0%	2.9%	0.0%	0.0%	0.7%	1.4%
71472	0	328	+0.00%	85.7%	4.0%	0.3%	1.2%	0.0%	4.0%	0.3%	4.6%
71473	0	452	+0.00%	93.8%	1.1%	0.9%	1.3%	0.0%	0.7%	0.4%	1.8%
71218	0	62	+0.00%	82.3%	14.5%	0.0%	0.0%	0.0%	0.0%	0.0%	3.2%
71475	0	5	+0.00%	60.0%	0.0%	0.0%	20.0%	0.0%	0.0%	0.0%	20.0%
71230	0	4	+0.00%	50.0%	50.0%	0.0%	0.0%	0.0%	0.0%	0.0%	0.0%
71359	0	29	+0.00%	24.1%	48.3%	3.4%	6.9%	0.0%	3.4%	6.9%	6.9%
70310	0	383	+0.00%	3.4%	89.0%	0.8%	0.8%	0.0%	0.0%	0.3%	5.7%
71250	0	138	+0.00%	62.3%	21.7%	0.7%	5.8%	0.0%	0.0%	2.9%	6.5%
70556	0	545	+0.00%	79.4%	18.0%	0.0%	1.1%	0.0%	0.0%	0.0%	1.5%
70558	0	140	+0.00%	78.6%	2.9%	1.4%	5.7%	0.0%	0.0%	0.0%	11.4%
71339	0	75	+0.00%	81.3%	10.7%	2.7%	5.3%	0.0%	0.0%	0.0%	0.0%

Zip Code Tabulation Area	Pop. Change	Adj. Pop.	Change (%)	W%	B+B& W%	AS+A S&W %	AI+AI &W%	PI+P I&W %	OTH+ OTH& W%	OTH MUL TI%	H%
70609	0	260	+0.00%	46.5%	31.9%	9.2%	0.8%	0.0%	1.2%	0.8%	9.6%
70629	0	19	+0.00%	42.1%	42.1%	5.3%	0.0%	0.0%	5.3%	5.3%	0.0%
70638	0	798	+0.00%	87.8%	2.8%	0.8%	5.8%	0.0%	0.6%	0.1%	2.1%
71330	0	76	+0.00%	86.8%	1.3%	0.0%	1.3%	0.0%	5.3%	2.6%	2.6%
70519	0	122	+0.00%	32.8%	43.4%	11.5%	0.8%	0.0%	0.8%	2.5%	8.2%
71401	0	73	+0.00%	93.2%	1.4%	0.0%	2.7%	0.0%	0.0%	0.0%	2.7%
70658	0	888	+0.00%	92.6%	2.4%	0.6%	1.6%	0.0%	0.6%	0.3%	2.0%
71320	0	156	+0.00%	96.2%	1.3%	1.3%	0.0%	0.0%	0.0%	0.0%	1.3%
70513	0	134	+0.00%	79.9%	8.2%	0.0%	2.2%	0.0%	2.2%	1.5%	6.0%
71406	0	193	+0.00%	82.4%	4.1%	2.6%	5.7%	0.0%	2.1%	0.0%	3.1%
71316	0	66	+0.00%	98.5%	0.0%	0.0%	1.5%	0.0%	0.0%	0.0%	0.0%
71410	0	153	+0.00%	69.9%	26.8%	1.3%	2.0%	0.0%	0.0%	0.0%	0.0%
71279	0	45	+0.00%	46.7%	53.3%	0.0%	0.0%	0.0%	0.0%	0.0%	0.0%
70743	0	397	+0.00%	96.7%	1.0%	0.0%	0.3%	0.0%	0.0%	0.5%	1.5%
71276	0	219	+0.00%	40.2%	52.5%	0.0%	2.3%	0.0%	0.5%	0.0%	4.6%
71272	0	2,400	+0.00%	68.8%	23.0%	2.7%	1.5%	0.0%	0.1%	0.2%	3.8%
70464	0	220	+0.00%	80.5%	2.3%	4.5%	3.2%	0.0%	1.4%	0.5%	7.7%
70457	0	221	+0.00%	60.2%	2.7%	1.4%	0.9%	1.4%	1.4%	0.5%	31.7%
70756	0	510	+0.00%	61.2%	30.2%	0.0%	2.0%	0.0%	1.0%	1.0%	4.7%
70762	0	1,034	+0.00%	87.8%	6.7%	0.2%	0.9%	0.0%	0.6%	0.2%	3.7%
71426	0	134	+0.00%	65.7%	25.4%	0.0%	3.7%	0.0%	2.2%	0.7%	2.2%
71427	0	329	+0.00%	88.1%	3.3%	0.0%	4.0%	0.0%	1.2%	1.5%	1.8%
71428	0	20	+0.00%	70.0%	15.0%	0.0%	0.0%	0.0%	5.0%	10.0%	0.0%
70402	0	1,634	+0.00%	40.5%	52.3%	1.2%	1.1%	0.0%	0.6%	0.1%	4.3%
70786	0	12	+0.00%	83.3%	0.0%	0.0%	0.0%	0.0%	0.0%	0.0%	16.7%
71356	0	345	+0.00%	64.9%	29.6%	0.6%	0.6%	0.0%	0.3%	0.9%	3.2%
70575	0	48	+0.00%	64.6%	2.1%	18.8%	4.2%	0.0%	0.0%	0.0%	10.4%

Census Place

Census Place	Pop. Change	Adj. Pop.	Change (%)	W%	B+B& W%	AS+ AS& W%	AI+AI& W%	PI+PI &W%	OTH+ OTH& W%	OTH MULT I%	H%
Waterproof	-367	174	-67.84%	5.5%	91.1%	0.2%	0.0%	0.0%	0.2%	1.1%	1.8%
Clarks	-525	527	-49.90%	49.8%	45.4%	0.8%	0.7%	0.0%	0.3%	0.1%	2.9%
Richmond	-247	264	-48.34%	66.7%	26.2%	0.0%	1.4%	0.0%	1.6%	0.6%	3.5%
Jackson	-1,586	2,404	-39.75%	61.0%	32.5%	0.4%	1.3%	0.1%	0.4%	0.5%	4.0%
St. Gabriel	-1,616	4,817	-25.12%	38.3%	48.8%	1.2%	0.3%	0.0%	0.6%	0.4%	10.4%
Lemannville	-85	610	-12.23%	19.4%	77.0%	0.0%	0.3%	0.0%	0.3%	0.4%	2.6%
Clinton	-149	1,191	-11.12%	42.2%	53.6%	1.0%	1.4%	0.0%	0.2%	0.3%	1.3%
Richwood	-301	3,580	-7.76%	13.5%	59.0%	5.9%	0.2%	0.0%	0.9%	0.3%	20.3%
Tallulah	-473	5,813	-7.52%	16.2%	81.0%	0.1%	0.3%	0.0%	0.1%	0.7%	1.6%
Farmerville	-224	3,142	-6.65%	28.2%	65.4%	0.4%	0.7%	0.0%	0.6%	0.4%	4.2%
Harrisonburg	-17	260	-6.14%	71.5%	21.3%	0.4%	0.0%	0.0%	0.0%	0.4%	6.5%
Napoleonville	-31	509	-5.74%	15.6%	80.7%	0.0%	0.7%	0.0%	0.2%	0.0%	2.8%
Amite City	-193	3,812	-4.82%	40.6%	55.3%	0.7%	0.5%	0.0%	0.3%	0.4%	2.2%
Gloster	2	55	+3.77%	64.2%	5.7%	0.0%	0.0%	0.0%	0.0%	9.4%	20.8%
Siracusaville	10	307	+3.37%	4.4%	89.2%	0.0%	0.7%	0.0%	0.0%	2.4%	3.4%
Good Pine	8	267	+3.09%	53.3%	40.2%	1.2%	1.9%	0.0%	1.2%	0.8%	1.5%
Colfax	-36	1,392	-2.52%	37.3%	59.7%	0.3%	0.4%	0.0%	0.8%	0.4%	1.1%
Greensburg	-14	615	-2.23%	41.8%	50.7%	0.5%	1.3%	0.2%	1.0%	1.3%	3.3%
Delacroix	1	49	+2.08%	62.5%	2.1%	0.0%	0.0%	0.0%	0.0%	0.0%	35.4%
Rodessa	4	196	+2.08%	66.7%	25.0%	0.0%	1.0%	0.0%	2.6%	0.5%	4.2%
Dixie Inn	6	299	+2.05%	47.4%	48.1%	0.7%	0.3%	0.0%	1.7%	0.7%	1.0%
Covington	-236	11,328	-2.04%	71.0%	17.5%	1.2%	1.5%	0.1%	1.5%	0.6%	6.7%
Romeville	2	101	+2.02%	18.2%	74.7%	0.0%	2.0%	0.0%	0.0%	4.0%	1.0%
Banks Springs	22	1,158	+1.94%	42.7%	52.6%	0.4%	0.8%	0.0%	0.7%	0.2%	2.6%
Oretta	7	378	+1.89%	87.6%	3.2%	0.5%	4.9%	0.0%	0.3%	0.3%	3.2%
Columbia	5	282	+1.81%	72.9%	18.4%	0.7%	1.4%	0.0%	0.4%	0.7%	5.4%
South Mansfield	6	339	+1.80%	14.1%	77.2%	0.3%	1.2%	0.0%	0.3%	2.1%	4.8%
Bogalusa	191	10,850	+1.79%	41.4%	51.9%	0.7%	0.9%	0.0%	0.8%	0.6%	3.8%
Dry Prong	8	463	+1.76%	94.3%	0.7%	0.2%	3.3%	0.0%	0.7%	0.0%	0.9%
Wilson	6	354	+1.72%	20.1%	74.4%	0.3%	0.6%	0.0%	1.1%	1.1%	2.3%
Cameron	-5	310	-1.59%	87.6%	4.4%	0.0%	2.9%	0.3%	1.9%	0.3%	2.5%
Clarence	5	331	+1.53%	21.2%	73.6%	0.0%	0.9%	0.6%	0.6%	2.5%	0.6%
Ringgold	21	1,400	+1.52%	34.7%	60.1%	0.1%	2.0%	0.0%	0.9%	0.5%	1.8%
Pollock	6	400	+1.52%	91.4%	0.8%	0.5%	3.6%	0.0%	1.0%	0.5%	2.3%
Frierson	2	134	+1.52%	29.5%	61.4%	0.8%	5.3%	0.0%	0.8%	0.8%	1.5%
Winnsboro	73	4,935	+1.50%	22.1%	74.9%	0.5%	0.3%	0.0%	0.2%	0.4%	1.6%
Wisner	11	782	+1.43%	56.5%	41.0%	0.3%	0.4%	0.0%	0.1%	0.0%	1.7%
Marksville	-71	4,994	-1.40%	46.0%	47.6%	0.8%	2.1%	0.0%	0.7%	1.2%	1.6%
Many	-35	2,536	-1.36%	42.1%	52.2%	0.5%	1.9%	0.1%	0.5%	0.8%	1.9%

Census Place	Pop. Change	Adj. Pop.	Change (%)	W%	B+B& W%	AS+ AS& W%	AI+AI& W%	PI+PI &W%	OTH+ OTH& W%	OTH MULT I%	H%
Dodson	4	298	+1.36%	87.1%	11.2%	1.0%	0.3%	0.0%	0.3%	0.0%	0.0%
Union	10	745	+1.36%	20.8%	78.4%	0.0%	0.0%	0.0%	0.0%	0.4%	0.4%
Maringouin	12	903	+1.35%	11.8%	87.0%	0.0%	0.3%	0.0%	0.1%	0.2%	0.6%
Pioneer	2	151	+1.34%	35.6%	46.3%	0.0%	7.4%	0.0%	0.0%	0.0%	10.7%
Fenton	3	229	+1.33%	44.7%	48.2%	0.4%	0.9%	0.0%	0.9%	2.2%	2.7%
Urania	9	707	+1.29%	85.5%	7.4%	0.3%	2.4%	0.0%	0.7%	0.0%	3.6%
Marion	8	631	+1.28%	37.2%	59.6%	0.0%	0.6%	0.0%	1.1%	0.3%	1.1%
Venice	2	164	+1.23%	71.6%	15.4%	2.5%	4.3%	0.0%	1.2%	0.6%	4.3%
Natchez	6	495	+1.23%	3.1%	93.3%	0.0%	0.0%	0.0%	0.6%	1.8%	1.2%
Midway	14	1,171	+1.21%	46.1%	47.1%	0.3%	3.7%	0.2%	0.8%	0.8%	1.1%
Oberlin	17	1,419	+1.21%	49.9%	39.2%	1.4%	1.8%	0.3%	1.1%	0.4%	5.9%
Homer	33	2,780	+1.20%	25.6%	69.7%	0.9%	1.1%	0.1%	0.4%	0.8%	1.5%
Winnfield	50	4,203	+1.20%	39.4%	54.9%	0.1%	1.2%	0.0%	0.6%	0.8%	3.1%
Tangipahoa	5	430	+1.18%	8.0%	87.8%	0.2%	0.2%	0.2%	0.2%	1.2%	2.1%
Bayou Goula	6	520	+1.17%	6.8%	91.1%	0.0%	0.2%	0.2%	0.0%	0.0%	1.8%
Angie	3	261	+1.16%	63.6%	31.8%	0.0%	1.2%	0.0%	0.4%	0.4%	2.7%
Bunkie	38	3,384	+1.14%	32.0%	62.1%	0.3%	2.5%	0.0%	0.2%	0.8%	2.0%
Rayville	38	3,385	+1.14%	21.7%	73.9%	0.7%	0.4%	0.0%	0.8%	0.7%	1.8%
Cottonport	23	2,046	+1.14%	34.9%	60.4%	0.4%	1.3%	0.0%	0.3%	0.7%	1.9%
Killona	8	732	+1.10%	0.7%	98.5%	0.1%	0.0%	0.0%	0.1%	0.4%	0.1%
Pointe a la Hache	2	185	+1.09%	6.6%	88.0%	0.0%	0.0%	0.0%	1.1%	1.1%	3.3%
Collinston	3	277	+1.09%	51.1%	43.8%	0.0%	0.7%	0.0%	2.9%	0.4%	1.1%
Palmetto	1	93	+1.09%	48.9%	43.5%	0.0%	2.2%	0.0%	1.1%	1.1%	3.3%
Ville Platte	68	6,371	+1.08%	29.6%	67.1%	0.9%	0.5%	0.0%	0.2%	0.5%	1.3%
Norwood	3	282	+1.08%	77.8%	21.5%	0.0%	0.0%	0.0%	0.0%	0.0%	0.7%
Minorca	23	2,179	+1.07%	63.8%	31.2%	0.0%	1.8%	0.0%	0.6%	0.4%	2.4%
Supreme	9	848	+1.07%	15.0%	81.0%	0.2%	0.8%	0.0%	0.0%	0.6%	2.3%
Marrero	345	32,727	+1.07%	31.9%	51.0%	5.8%	1.2%	0.0%	0.7%	0.8%	8.6%
Paincourtville	9	866	+1.05%	60.6%	33.6%	0.8%	1.1%	0.0%	0.4%	0.7%	2.9%
Convent	-5	478	-1.04%	42.0%	53.0%	0.4%	0.0%	0.0%	0.6%	0.4%	3.5%
Jordan Hill	2	198	+1.02%	92.9%	2.6%	0.0%	2.0%	0.0%	0.5%	0.5%	1.5%
Darrow	2	202	+1.00%	10.0%	83.5%	0.0%	0.0%	0.5%	1.0%	2.5%	2.5%
Independence	16	1,651	+0.98%	44.8%	47.9%	0.5%	0.6%	0.0%	1.0%	0.6%	4.6%
Waggaman	96	9,931	+0.98%	23.4%	66.0%	1.4%	0.8%	0.0%	0.7%	0.4%	7.3%
Bridge City	70	7,289	+0.97%	27.5%	44.5%	2.8%	1.0%	0.0%	0.5%	0.6%	23.2%
Ferriday	31	3,220	+0.97%	11.4%	85.8%	0.2%	0.6%	0.0%	0.2%	0.2%	1.6%
Montegut	14	1,479	+0.96%	74.6%	2.7%	0.3%	18.3%	0.1%	1.4%	0.3%	2.1%
Trout	1	105	+0.96%	74.0%	10.6%	1.0%	9.6%	1.0%	0.0%	0.0%	3.8%
Baskin	2	212	+0.95%	87.1%	6.7%	0.0%	1.4%	0.0%	1.4%	0.5%	2.9%
Gray	51	5,569	+0.92%	50.2%	38.3%	1.2%	3.8%	0.0%	0.9%	1.1%	4.4%
Violet	53	5,811	+0.92%	27.6%	62.8%	0.8%	1.0%	0.0%	0.8%	0.5%	6.5%

Census Place	Pop. Change	Adj. Pop.	Change (%)	W%	B+B& W%	AS+ AS& W%	AI+AI& W%	PI+PI &W%	OTH+ OTH& W%	OTH MULT I%	H%
Ida	2	219	+0.92%	96.3%	2.8%	0.0%	0.0%	0.0%	0.0%	0.0%	0.9%
Baldwin	16	1,778	+0.91%	29.1%	64.6%	1.2%	1.9%	0.1%	0.3%	0.7%	2.0%
Roseland	8	888	+0.91%	33.6%	62.2%	0.2%	1.4%	0.0%	0.2%	0.5%	1.9%
Vivian	28	3,101	+0.91%	50.1%	43.7%	1.2%	2.1%	0.0%	0.7%	0.3%	2.0%
Oakdale	61	6,753	+0.91%	47.8%	33.0%	1.0%	2.5%	0.1%	0.7%	0.7%	14.2%
Brownsville	39	4,392	+0.90%	54.4%	29.7%	0.7%	1.9%	0.0%	0.8%	0.7%	11.7%
Campti	8	895	+0.90%	17.7%	77.9%	0.0%	1.6%	0.0%	0.6%	0.8%	1.5%
Minden	107	12,035	+0.90%	41.6%	54.2%	0.6%	0.9%	0.1%	0.4%	0.5%	1.5%
Kentwood	19	2,164	+0.89%	19.3%	77.7%	0.2%	0.4%	0.0%	0.2%	1.0%	1.1%
Woodmere	100	11,338	+0.89%	6.2%	80.3%	3.7%	0.4%	0.0%	0.6%	1.1%	7.7%
Oil City	8	909	+0.89%	49.9%	41.8%	0.2%	4.3%	0.1%	1.1%	0.7%	1.8%
Lacombe	77	8,734	+0.89%	63.3%	21.7%	1.1%	2.2%	0.0%	2.2%	2.0%	7.5%
Empire	8	913	+0.88%	51.3%	25.7%	8.3%	1.4%	0.3%	2.1%	0.8%	10.1%
Pitkin	4	459	+0.88%	87.5%	0.9%	0.0%	7.0%	0.0%	1.1%	0.0%	3.5%
Jonesville	15	1,743	+0.87%	20.7%	76.0%	0.1%	0.2%	0.1%	0.6%	0.9%	1.5%
Estherwood	6	700	+0.86%	90.8%	5.0%	0.0%	1.3%	0.0%	0.0%	0.0%	2.9%
Franklinton	31	3,693	+0.85%	45.2%	49.1%	0.6%	0.9%	0.0%	0.5%	0.5%	3.2%
Kilbourne	3	354	+0.85%	87.2%	7.4%	0.3%	2.6%	0.0%	0.0%	0.3%	2.3%
New Roads	38	4,587	+0.84%	38.4%	57.6%	1.1%	0.4%	0.0%	0.7%	0.5%	1.3%
Cullen	6	722	+0.84%	10.6%	87.2%	0.3%	0.0%	0.0%	0.4%	0.1%	1.4%
Springhill	40	4,841	+0.83%	59.4%	35.5%	0.8%	1.6%	0.0%	0.8%	0.3%	1.6%
Westwego	71	8,639	+0.83%	57.8%	28.2%	1.4%	1.9%	0.0%	1.2%	0.6%	8.9%
Mansura	11	1,331	+0.83%	29.5%	66.1%	0.0%	2.2%	0.0%	0.6%	0.7%	0.9%
Glenmora	9	1,096	+0.83%	59.8%	26.2%	1.2%	1.8%	0.1%	1.2%	0.5%	9.2%
Sicily Island	3	369	+0.82%	26.2%	68.6%	0.0%	2.7%	0.0%	1.1%	0.5%	0.8%
Hosston	2	246	+0.82%	74.2%	19.3%	0.0%	3.7%	0.0%	1.2%	0.4%	1.2%
Harvey	180	22,416	+0.81%	29.2%	44.7%	7.0%	0.8%	0.1%	0.8%	0.8%	16.7%
Gilliam	1	124	+0.81%	56.9%	38.2%	0.0%	1.6%	0.0%	0.0%	0.8%	2.4%
Pleasant Hill	5	622	+0.81%	49.6%	45.4%	0.0%	2.1%	0.0%	0.8%	0.3%	1.8%
Bawcomville	28	3,500	+0.81%	72.4%	11.6%	0.4%	2.9%	0.0%	1.3%	0.5%	10.8%
Oak Ridge	1	125	+0.81%	90.3%	5.6%	0.0%	1.6%	0.0%	0.0%	0.8%	1.6%
Lucky	2	253	+0.80%	40.2%	56.2%	0.4%	0.0%	0.4%	2.4%	0.0%	0.4%
Mangham	5	629	+0.80%	56.4%	40.4%	0.2%	1.3%	0.0%	0.0%	0.5%	1.3%
Garyville	17	2,140	+0.80%	47.8%	48.0%	0.1%	0.9%	0.0%	0.5%	0.5%	2.2%
Zwolle	13	1,651	+0.79%	30.2%	45.7%	0.3%	16.1%	0.1%	0.2%	1.9%	5.5%
Newellton	7	893	+0.79%	22.3%	73.7%	0.0%	0.6%	0.0%	0.8%	1.2%	1.4%
Rosepine	12	1,531	+0.79%	76.8%	8.5%	1.1%	3.5%	0.3%	0.1%	0.9%	8.8%
Iowa	27	3,463	+0.79%	60.6%	32.4%	0.9%	2.1%	0.2%	0.4%	0.8%	2.6%
Hodge	3	385	+0.79%	54.7%	37.7%	1.8%	1.6%	0.0%	1.0%	0.5%	2.6%
Spearsville	1	127	+0.79%	88.1%	3.2%	0.0%	0.8%	0.0%	0.0%	1.6%	6.3%
Tickfaw	5	640	+0.79%	66.9%	18.6%	2.7%	1.7%	0.0%	0.9%	0.5%	8.7%
Boyce	7	895	+0.79%	23.3%	70.0%	0.1%	2.7%	0.0%	0.1%	0.1%	3.6%
Point Place	3	385	+0.79%	54.7%	32.7%	0.0%	1.8%	0.0%	5.8%	2.6%	2.4%

Census Place	Pop. Change	Adj. Pop.	Change (%)	W%	B+B& W%	AS+ AS& W%	AI+AI& W%	PI+PI &W%	OTH+ OTH& W%	OTH MULT I%	H%
Lake Providence	28	3,615	+0.78%	16.6%	81.4%	0.1%	0.5%	0.0%	0.1%	0.4%	0.8%
Alexandria	352	45,627	+0.78%	36.5%	55.8%	2.5%	0.9%	0.0%	0.7%	0.7%	2.8%
Benton	16	2,064	+0.78%	52.9%	36.8%	1.6%	2.3%	0.2%	0.8%	0.9%	4.5%
Center Point	4	524	+0.77%	96.3%	1.0%	0.2%	0.8%	0.0%	0.6%	0.4%	0.8%
Chataignier	2	261	+0.77%	41.3%	54.4%	0.0%	0.0%	0.0%	0.8%	1.2%	2.3%
Dubach	7	915	+0.77%	52.1%	41.3%	0.6%	3.0%	0.0%	0.2%	0.0%	2.9%
Rock Hill	2	262	+0.77%	90.0%	3.1%	0.0%	0.0%	0.0%	2.7%	1.2%	3.1%
Vidalia	-31	3,996	-0.77%	67.6%	26.0%	1.2%	1.0%	0.0%	0.4%	0.3%	3.5%
Reddell	7	911	+0.77%	70.6%	24.7%	0.0%	0.6%	0.0%	0.2%	1.3%	2.7%
Stanley	1	133	+0.76%	84.1%	11.4%	0.0%	0.8%	0.0%	0.8%	0.0%	3.0%
Starks	5	664	+0.76%	91.4%	4.7%	0.2%	2.1%	0.0%	0.3%	0.9%	0.5%
Turkey Creek	3	397	+0.76%	94.4%	0.3%	0.0%	1.8%	0.0%	0.3%	0.0%	3.3%
Franklin	51	6,779	+0.76%	35.5%	56.0%	0.8%	1.8%	0.0%	0.6%	0.7%	4.5%
Morganza	4	529	+0.76%	60.0%	29.9%	0.4%	0.4%	0.0%	2.1%	0.8%	6.5%
Cotton Valley	6	793	+0.76%	48.3%	46.9%	0.0%	3.2%	0.0%	0.1%	0.0%	1.5%
Shreveport	1,395	188,988	+0.74%	35.3%	56.7%	1.9%	1.0%	0.1%	0.7%	0.8%	3.5%
Lakeview	6	824	+0.73%	62.2%	27.8%	0.4%	2.0%	0.0%	2.2%	0.2%	5.3%
Longville	4	549	+0.73%	90.5%	1.1%	0.9%	3.7%	0.0%	0.4%	0.2%	3.3%
Dulac	9	1,250	+0.73%	45.6%	3.9%	2.6%	40.1%	0.2%	0.6%	0.9%	6.0%
Crowley	86	11,796	+0.73%	60.3%	34.1%	0.6%	0.7%	0.0%	0.6%	0.4%	3.4%
Hammond	142	19,726	+0.73%	43.8%	46.2%	2.1%	1.2%	0.1%	0.7%	0.6%	5.3%
Buras	8	1,117	+0.72%	42.5%	12.3%	31.9%	3.7%	0.0%	3.0%	1.3%	5.4%
Avondale	33	4,615	+0.72%	41.3%	32.5%	11.1%	1.3%	0.0%	1.0%	0.7%	12.1%
Plaquemine	45	6,314	+0.72%	45.8%	48.3%	0.9%	0.9%	0.1%	0.3%	0.3%	3.3%
Delhi	19	2,641	+0.72%	30.1%	66.5%	0.4%	0.7%	0.0%	0.2%	0.3%	1.8%
Natalbany	18	2,528	+0.72%	46.0%	42.2%	0.9%	1.4%	0.0%	0.6%	0.4%	8.5%
Lecompte	6	851	+0.71%	27.5%	66.0%	0.4%	1.9%	0.0%	0.9%	1.4%	1.9%
Anacoco	6	857	+0.71%	85.9%	3.5%	2.9%	3.4%	0.4%	1.5%	0.1%	2.2%
Grand Isle	7	1,012	+0.70%	92.4%	0.2%	0.6%	2.6%	0.0%	0.9%	0.3%	3.0%
New Iberia	201	28,756	+0.70%	44.5%	45.4%	3.0%	0.8%	0.0%	0.5%	0.6%	5.1%
Springfield	3	430	+0.70%	83.4%	10.8%	0.2%	2.1%	0.2%	1.4%	0.2%	1.6%
New Orleans	2,703	386,700	+0.70%	31.6%	54.5%	3.2%	0.6%	0.1%	1.0%	1.0%	8.1%
Wallace Ridge	4	576	+0.70%	91.4%	4.7%	0.7%	1.6%	0.0%	0.5%	0.7%	0.3%
Houma	234	33,640	+0.70%	58.2%	25.1%	1.7%	6.1%	0.1%	0.5%	0.9%	7.3%
Boothville	5	723	+0.70%	52.4%	23.8%	6.1%	6.7%	0.0%	0.3%	3.2%	7.5%
Merrydale	65	9,292	+0.70%	2.5%	93.6%	0.0%	0.2%	0.1%	0.2%	0.7%	2.8%
Ridgecrest	4	587	+0.69%	48.2%	45.6%	0.2%	1.4%	0.0%	0.2%	0.5%	3.9%
Haynesville	14	2,053	+0.69%	33.3%	61.8%	0.1%	2.0%	0.0%	0.2%	0.7%	1.8%

Census Place	Pop. Change	Adj. Pop.	Change (%)	W%	B+B&W%	AS+AS&W%	AI+AI&W%	PI+PI&W%	OTH+OTH&W%	OTH MULT I%	H%
New Llano	15	2,228	+0.68%	37.8%	40.4%	6.1%	1.9%	0.6%	1.5%	1.6%	10.0%
New Sarpy	8	1,177	+0.68%	42.5%	49.7%	0.1%	1.4%	0.0%	1.4%	0.3%	4.6%
Lockport	17	2,507	+0.68%	84.5%	5.7%	0.8%	3.2%	0.0%	0.6%	0.2%	5.0%
Simpson	4	589	+0.68%	91.1%	2.9%	0.2%	2.6%	0.3%	0.0%	0.0%	2.9%
Abbeville	76	11,262	+0.68%	44.4%	44.1%	5.7%	0.8%	0.0%	0.6%	0.4%	3.9%
Opelousas	106	15,892	+0.67%	17.7%	78.1%	0.8%	0.4%	0.0%	0.3%	0.9%	1.6%
Grayson	3	452	+0.67%	79.3%	15.6%	0.0%	2.9%	0.2%	1.1%	0.4%	0.4%
Donaldsonville	45	6,740	+0.67%	18.0%	78.3%	0.3%	0.2%	0.0%	0.3%	0.5%	2.4%
Washington	5	747	+0.67%	40.7%	56.6%	0.0%	0.4%	0.0%	0.4%	0.3%	1.6%
Logansport	9	1,349	+0.67%	52.8%	41.4%	0.1%	1.7%	0.0%	1.2%	0.7%	2.0%
Singer	2	305	+0.66%	89.4%	1.7%	0.3%	3.0%	0.0%	3.0%	0.0%	2.6%
Tullos	2	306	+0.66%	92.1%	2.0%	0.3%	3.3%	0.0%	1.0%	0.7%	0.7%
Krotz Springs	6	910	+0.66%	91.5%	1.2%	0.2%	3.0%	0.0%	0.3%	0.8%	3.0%
Forest Hill	4	609	+0.66%	57.2%	2.1%	1.7%	0.7%	0.0%	0.0%	0.0%	38.3%
Vinton	22	3,422	+0.65%	65.7%	22.0%	0.9%	1.6%	0.0%	1.2%	0.2%	8.4%
French Settlement	7	1,080	+0.65%	91.1%	1.0%	3.0%	1.4%	0.0%	0.8%	0.2%	2.4%
Albany	8	1,243	+0.65%	84.5%	9.6%	0.2%	1.5%	0.0%	0.7%	0.3%	3.2%
White Castle	11	1,733	+0.64%	7.3%	90.5%	0.0%	0.4%	0.1%	0.4%	0.6%	0.8%
Cheneyville	3	471	+0.64%	25.9%	69.7%	0.2%	0.4%	0.0%	1.3%	1.5%	1.1%
Ponchatoula	50	7,872	+0.64%	61.4%	29.7%	1.1%	1.6%	0.1%	1.0%	0.6%	4.6%
Montgomery	4	626	+0.64%	64.6%	27.3%	0.0%	5.0%	0.3%	1.1%	0.3%	1.3%
Port Vincent	4	650	+0.62%	89.9%	2.2%	0.3%	2.5%	0.0%	1.9%	0.0%	3.3%
Sibley	7	1,134	+0.62%	72.4%	21.6%	0.3%	2.0%	0.0%	0.0%	0.2%	3.6%
Amelia	13	2,145	+0.61%	27.3%	8.7%	12.3 %	1.5%	0.0%	0.7%	0.4%	49.2%
Joyce	2	330	+0.61%	92.1%	2.7%	0.3%	3.7%	0.0%	0.0%	0.0%	1.2%
Reserve	52	8,593	+0.61%	32.9%	59.4%	0.4%	0.7%	0.0%	0.3%	0.5%	5.8%
Jeanerette	29	4,842	+0.60%	23.8%	72.3%	0.4%	0.5%	0.0%	0.3%	0.5%	2.1%
Calhoun	4	674	+0.60%	84.9%	6.6%	0.3%	2.8%	0.0%	1.6%	0.0%	3.7%
Lake Charles	509	85,381	+0.60%	41.4%	47.1%	2.9%	0.9%	0.1%	0.9%	1.0%	5.6%
Raceland	58	9,826	+0.59%	63.1%	29.1%	0.5%	2.2%	0.0%	0.5%	0.4%	4.1%
NO PLACE	-9,682	1,629,507	-0.59%	70.9%	18.9%	1.4%	2.0%	0.1%	0.9%	0.4%	5.4%
Belle Rose	10	1,708	+0.59%	42.5%	54.3%	0.0%	0.5%	0.0%	0.0%	0.1%	2.7%
Bonita	1	171	+0.59%	32.4%	58.8%	0.6%	0.6%	0.0%	0.6%	1.2%	5.9%
Basile	7	1,221	+0.58%	69.1%	21.7%	1.6%	1.2%	0.0%	0.5%	1.1%	4.7%
Kaplan	25	4,377	+0.57%	78.0%	15.9%	1.3%	1.0%	0.1%	0.6%	0.4%	2.8%
Denham Springs	52	9,338	+0.56%	71.3%	17.3%	1.5%	1.8%	0.0%	1.1%	0.4%	6.7%
Larose	38	6,801	+0.56%	76.5%	5.0%	2.9%	6.0%	0.0%	0.7%	0.3%	8.6%
Epps	2	360	+0.56%	56.1%	39.9%	0.3%	1.4%	0.0%	0.8%	0.0%	1.4%

Census Place	Pop. Change	Adj. Pop.	Change (%)	W%	B+B& W%	AS+ AS& W%	AI+AI& W%	PI+PI &W%	OTH+ OTH& W%	OTH MULT I%	H%
Lawtell	6	1,072	+0.56%	41.3%	49.9%	0.2%	0.7%	0.0%	1.1%	2.1%	4.8%
Sarepta	4	721	+0.56%	94.6%	0.8%	0.3%	2.9%	0.0%	0.6%	0.0%	0.8%
Poydras	14	2,550	+0.55%	62.5%	15.1%	0.9%	2.5%	0.0%	1.5%	0.4%	17.3%
Monticello	30	5,461	+0.55%	7.6%	87.5%	0.8%	0.2%	0.0%	0.3%	1.0%	2.6%
Pineville	79	14,463	+0.55%	55.7%	34.5%	2.6%	1.9%	0.1%	1.0%	0.8%	3.4%
DeRidder	54	9,906	+0.55%	54.9%	33.1%	2.3%	1.9%	0.2%	0.9%	0.8%	5.8%
Greenwood	17	3,183	+0.54%	60.3%	28.3%	1.2%	2.4%	0.1%	2.0%	0.8%	5.1%
Florien	3	556	+0.54%	63.8%	26.2%	0.5%	5.1%	0.0%	1.3%	0.5%	2.5%
Port Sulphur	9	1,686	+0.54%	21.2%	61.8%	3.5%	5.1%	0.1%	2.9%	2.0%	3.5%
Ama	7	1,297	+0.54%	50.7%	41.9%	0.0%	1.2%	0.1%	0.5%	0.9%	4.7%
Olla	7	1,302	+0.54%	90.9%	2.2%	0.2%	3.3%	0.0%	1.2%	0.2%	2.1%
Chauvin	14	2,589	+0.54%	87.3%	1.4%	0.7%	6.8%	0.0%	0.4%	0.3%	3.1%
Leesville	30	5,679	+0.53%	46.6%	36.3%	3.1%	2.4%	0.6%	1.4%	1.4%	8.2%
Vienna Bend	7	1,321	+0.53%	28.7%	60.1%	1.2%	2.0%	0.0%	2.7%	1.9%	3.4%
Erwinville	12	2,287	+0.53%	64.4%	28.9%	0.6%	1.1%	0.0%	0.9%	1.3%	2.7%
Estelle	95	18,047	+0.53%	47.2%	28.7%	6.3%	2.0%	0.0%	1.2%	0.6%	14.0%
Converse	2	381	+0.53%	81.8%	3.2%	0.0%	12.9%	0.0%	0.5%	0.0%	1.6%
Morgan City	61	11,533	+0.53%	57.9%	23.0%	2.0%	2.3%	0.1%	0.7%	0.5%	13.5%
Abita Springs	14	2,645	+0.53%	81.5%	6.2%	0.8%	1.4%	0.2%	1.3%	0.5%	8.2%
Slidell	151	28,932	+0.52%	60.4%	25.0%	2.3%	1.8%	0.1%	1.2%	0.9%	8.3%
Bienville	1	192	+0.52%	65.4%	33.5%	0.0%	0.0%	0.0%	1.0%	0.0%	0.0%
Eunice	49	9,471	+0.52%	57.8%	36.5%	1.1%	0.6%	0.1%	0.4%	0.7%	2.9%
Westlake	25	4,806	+0.52%	69.9%	20.3%	1.3%	1.4%	0.0%	0.5%	0.3%	6.3%
Hessmer	4	776	+0.52%	71.0%	24.0%	1.3%	1.8%	0.0%	0.1%	0.1%	1.7%
Gibbsland	4	777	+0.52%	9.1%	87.5%	0.0%	0.1%	0.0%	0.3%	0.9%	2.2%
Rayne	37	7,273	+0.51%	61.2%	35.2%	0.4%	0.9%	0.0%	0.5%	0.3%	1.6%
Golden Meadow	9	1,770	+0.51%	80.0%	2.2%	0.6%	11.1%	0.0%	0.1%	0.5%	5.5%
Montpelier	1	197	+0.51%	46.9%	46.4%	0.0%	1.0%	0.0%	0.0%	1.0%	4.6%
Kinder	11	2,181	+0.51%	68.2%	22.5%	1.5%	3.5%	0.1%	0.4%	0.7%	3.0%
Sun	2	394	+0.51%	85.2%	8.4%	0.5%	2.8%	0.0%	0.3%	0.8%	2.0%
Jefferson	54	10,687	+0.51%	59.1%	22.5%	1.8%	1.3%	0.1%	1.2%	0.5%	13.6%
Terrytown	128	25,406	+0.51%	25.8%	39.0%	5.1%	0.6%	0.1%	0.8%	0.9%	27.7%
Thibodaux	-81	15,867	-0.51%	53.8%	38.8%	0.9%	1.1%	0.1%	0.3%	0.4%	4.6%
Kenner	329	66,777	+0.50%	40.0%	22.2%	5.2%	0.8%	0.1%	1.2%	0.5%	30.0%
Lake Arthur	13	2,608	+0.50%	82.7%	13.7%	0.2%	0.9%	0.0%	0.5%	0.6%	1.4%
McNary	1	202	+0.50%	72.6%	7.0%	4.0%	3.5%	0.5%	2.0%	0.5%	10.0%
Church Point	21	4,200	+0.50%	55.2%	39.1%	0.3%	0.9%	0.0%	0.3%	0.1%	4.0%
Simsboro	4	807	+0.50%	55.4%	34.6%	0.0%	2.1%	0.0%	0.5%	0.6%	6.7%
West Monroe	66	13,169	+0.50%	54.0%	36.4%	1.1%	1.3%	0.1%	0.8%	0.6%	5.7%
Galliano	35	7,135	+0.49%	76.7%	2.5%	1.0%	7.2%	0.0%	0.3%	0.5%	11.7%
East Hodge	1	205	+0.49%	2.9%	95.1%	0.0%	0.0%	0.0%	1.0%	0.0%	1.0%
Baker	61	12,516	+0.49%	13.4%	82.6%	0.3%	0.4%	0.0%	0.4%	0.5%	2.3%

Census Place	Pop. Change	Adj. Pop.	Change (%)	W%	B+B& W%	AS+ AS& W%	AI+AI& W%	PI+PI &W%	OTH+ OTH& W%	OTH MULT I%	H%
Patterson	29	5,960	+0.49%	46.2%	44.4%	0.9%	2.2%	0.1%	1.1%	0.7%	4.4%
Boutte	15	3,069	+0.49%	33.3%	57.1%	1.1%	0.9%	0.0%	0.5%	0.1%	7.0%
Mamou	14	2,950	+0.48%	47.5%	48.0%	0.7%	0.7%	0.1%	0.4%	0.7%	1.7%
Paradis	6	1,248	+0.48%	79.5%	6.3%	1.4%	1.8%	0.1%	1.4%	0.4%	9.2%
Lewisburg	2	422	+0.48%	84.5%	1.2%	3.6%	0.0%	0.2%	2.6%	0.2%	7.6%
Jennings	47	9,884	+0.48%	64.7%	29.9%	0.4%	1.0%	0.0%	0.7%	0.7%	2.4%
Evergreen	1	216	+0.47%	66.5%	27.9%	0.9%	2.3%	0.0%	0.0%	1.9%	0.5%
Loreauville	3	661	+0.46%	75.8%	19.8%	0.2%	0.6%	0.2%	0.2%	0.5%	2.9%
Jonesboro	19	4,125	+0.46%	37.3%	51.5%	2.5%	0.9%	0.1%	0.8%	0.5%	6.5%
Des Allemands	10	2,189	+0.46%	78.0%	14.9%	0.2%	2.9%	0.0%	0.5%	0.2%	3.3%
Haughton	21	4,560	+0.46%	69.3%	19.6%	1.0%	3.2%	0.1%	1.6%	0.6%	4.6%
Gardere	61	13,264	+0.46%	21.0%	49.1%	3.9%	0.6%	0.0%	0.7%	0.8%	24.0%
Baton Rouge	1,050	228,520	+0.46%	34.2%	54.3%	3.5%	0.6%	0.0%	0.7%	0.7%	5.9%
Plaucheville	1	222	+0.45%	91.9%	1.8%	0.5%	2.3%	0.0%	0.9%	0.9%	1.8%
Gilbert	2	451	+0.45%	64.8%	31.0%	0.0%	1.1%	0.0%	1.6%	0.4%	1.1%
Bayou Vista	19	4,232	+0.45%	75.3%	9.3%	0.9%	3.1%	0.1%	0.7%	0.4%	10.2%
Schriever	30	6,741	+0.45%	60.2%	28.3%	0.8%	3.6%	0.0%	0.6%	0.7%	5.7%
Duson	6	1,332	+0.45%	56.0%	28.7%	0.8%	1.9%	0.0%	0.6%	1.4%	10.7%
Cut Off	25	5,558	+0.45%	79.9%	1.8%	1.3%	6.5%	0.0%	0.8%	0.3%	9.4%
Sunset	13	2,922	+0.45%	45.5%	50.5%	0.4%	0.6%	0.0%	0.6%	0.5%	2.0%
Breaux Bridge	33	7,546	+0.44%	48.3%	45.9%	1.2%	0.9%	0.1%	0.6%	0.5%	2.6%
Bossier City	277	62,978	+0.44%	50.8%	31.7%	3.1%	1.8%	0.2%	0.9%	0.9%	10.7%
Bernice	6	1,362	+0.44%	23.5%	59.6%	0.2%	0.6%	0.1%	0.7%	0.4%	15.0%
Fifth Ward	4	925	+0.43%	93.2%	3.7%	0.3%	1.2%	0.0%	0.3%	0.2%	1.1%
Castor	1	231	+0.43%	76.1%	15.7%	0.0%	5.2%	0.4%	1.3%	0.0%	1.3%
St. Rose	32	7,536	+0.43%	40.8%	41.4%	2.4%	0.9%	0.0%	0.8%	0.5%	13.1%
North Vacherie	9	2,102	+0.43%	22.5%	75.0%	0.0%	0.0%	0.0%	0.2%	0.6%	1.7%
Monterey	2	476	+0.42%	97.5%	0.0%	0.0%	1.1%	0.0%	0.0%	0.0%	1.5%
Walker	26	6,400	+0.41%	78.2%	11.7%	1.8%	1.8%	0.1%	1.3%	0.5%	4.5%
Edgard	8	1,956	+0.41%	4.6%	93.3%	0.1%	0.1%	0.1%	0.2%	1.1%	0.6%
Labadieville	7	1,722	+0.41%	72.9%	19.4%	0.3%	1.2%	0.0%	0.5%	0.1%	5.6%
Charenton	7	1,706	+0.41%	46.3%	23.2%	0.2%	26.5%	0.1%	0.6%	1.0%	2.1%
Chatham	2	493	+0.41%	55.4%	38.5%	0.6%	2.4%	0.0%	0.6%	0.4%	2.0%
Merryville	4	971	+0.41%	73.9%	15.3%	0.5%	4.9%	0.0%	1.1%	1.4%	2.8%
Lacassine	2	492	+0.41%	90.8%	4.3%	1.6%	0.8%	0.0%	0.2%	0.8%	1.4%
Hahnville	12	2,971	+0.41%	47.8%	44.3%	0.7%	1.0%	0.0%	0.4%	0.4%	5.4%
Keachi	1	244	+0.41%	79.0%	15.6%	0.0%	1.2%	0.0%	0.8%	0.8%	2.5%
Coushatta	-7	1,745	-0.40%	26.5%	68.3%	0.1%	0.7%	0.0%	0.4%	0.9%	3.1%
Bayou Blue	54	13,406	+0.40%	72.1%	9.2%	0.7%	6.9%	0.0%	0.8%	0.5%	9.7%
Sulphur	88	21,897	+0.40%	78.3%	9.4%	1.6%	1.9%	0.1%	1.0%	0.4%	7.4%

Census Place	Pop. Change	Adj. Pop.	Change (%)	W%	B+B& W%	AS+ AS& W%	AI+AI& W%	PI+PI &W%	OTH+ OTH& W%	OTH MULT I%	H%
Centerville	2	501	+0.40%	84.4%	8.4%	0.0%	2.8%	0.0%	1.8%	0.2%	2.4%
Norco	12	2,996	+0.40%	81.5%	8.2%	0.9%	1.9%	0.0%	1.1%	0.4%	6.0%
Pine Prairie	6	1,496	+0.40%	69.7%	7.4%	0.5%	0.9%	0.0%	0.5%	0.0%	21.0%
Dubberly	1	251	+0.40%	93.2%	4.0%	0.0%	1.6%	0.0%	0.0%	0.0%	1.2%
Choctaw	3	778	+0.39%	95.5%	1.9%	0.0%	0.5%	0.0%	0.5%	0.1%	1.4%
Cecilia	7	1,814	+0.39%	59.5%	36.1%	0.3%	1.5%	0.0%	0.5%	0.3%	1.8%
Bayou L'Ourse	7	1,813	+0.39%	78.6%	4.2%	1.4%	3.5%	0.0%	1.2%	0.1%	11.2%
Lafitte	4	1,018	+0.39%	80.9%	1.3%	6.2%	4.7%	0.0%	0.5%	0.6%	5.8%
Ventress	3	803	+0.38%	82.4%	10.0%	0.2%	1.4%	0.1%	0.5%	1.2%	4.1%
Meraux	26	6,830	+0.38%	65.1%	15.5%	3.2%	1.8%	0.0%	1.2%	0.5%	12.8%
St. Maurice	1	267	+0.38%	21.1%	71.8%	0.0%	4.1%	0.0%	0.0%	0.4%	2.6%
Saline	1	266	+0.38%	77.7%	18.1%	1.1%	0.4%	0.0%	0.4%	0.0%	2.3%
Iota	5	1,309	+0.38%	89.6%	6.7%	0.0%	0.5%	0.0%	0.5%	0.2%	2.4%
Crescent	3	814	+0.37%	62.6%	32.3%	0.0%	0.9%	0.0%	0.7%	0.5%	3.0%
Timberlane	37	10,401	+0.36%	37.5%	36.5%	8.8%	0.6%	0.0%	1.6%	0.8%	14.1%
Arcadia	10	2,756	+0.36%	25.7%	70.6%	0.2%	0.5%	0.1%	0.5%	0.2%	2.2%
Georgetown	1	278	+0.36%	93.5%	0.0%	0.4%	4.0%	0.0%	0.0%	0.0%	2.2%
Grosse Tete	2	550	+0.36%	65.5%	30.7%	0.7%	1.6%	0.0%	0.4%	0.2%	0.9%
DeQuincy	11	3,155	+0.35%	75.3%	18.0%	0.5%	2.6%	0.1%	0.7%	0.2%	2.5%
Brownfields	18	5,163	+0.35%	16.8%	79.9%	0.2%	0.6%	0.1%	0.2%	0.7%	1.5%
St. James	2	594	+0.34%	10.5%	86.3%	0.0%	0.0%	0.0%	0.0%	0.2%	3.0%
Plain Dealing	3	896	+0.34%	49.3%	47.4%	0.3%	1.1%	0.0%	0.1%	0.1%	1.7%
Gonzales	42	12,273	+0.34%	36.2%	47.6%	1.0%	0.8%	0.1%	0.7%	0.6%	12.9%
Grambling	18	5,257	+0.34%	0.6%	97.6%	0.1%	0.2%	0.0%	0.2%	0.6%	0.7%
Gramercy	10	2,942	+0.34%	49.4%	47.1%	0.4%	0.4%	0.0%	0.5%	0.6%	1.6%
Clayton	2	586	+0.34%	24.5%	73.6%	0.2%	0.0%	0.0%	0.3%	0.3%	1.0%
Berwick	16	4,787	+0.34%	75.5%	12.0%	1.0%	2.3%	0.1%	0.3%	0.4%	8.3%
Sorrento	5	1,519	+0.33%	71.7%	17.2%	0.9%	1.5%	0.1%	1.0%	0.3%	7.5%
Welsh	11	3,344	+0.33%	72.9%	23.0%	0.4%	0.7%	0.0%	0.8%	0.4%	1.9%
River Ridge	45	13,636	+0.33%	73.3%	12.3%	1.7%	1.1%	0.0%	1.0%	0.4%	10.1%
Morse	2	601	+0.33%	97.5%	1.8%	0.2%	0.3%	0.0%	0.0%	0.0%	0.2%
Bayou Cane	63	19,833	+0.32%	65.7%	18.8%	1.8%	5.3%	0.1%	0.7%	1.0%	6.5%
Mansfield	15	4,729	+0.32%	15.4%	79.6%	0.6%	0.8%	0.0%	0.3%	0.6%	2.8%
Monroe	155	47,857	+0.32%	30.2%	64.2%	1.9%	0.6%	0.0%	0.4%	0.6%	2.1%
Hackberry	3	929	+0.32%	94.9%	0.3%	0.5%	0.8%	0.0%	0.6%	0.4%	2.4%
Parks	2	642	+0.31%	61.7%	34.5%	0.0%	0.3%	0.0%	0.2%	0.5%	2.8%
Pearl River	8	2,573	+0.31%	83.1%	3.7%	1.1%	2.5%	0.1%	1.8%	1.0%	6.8%
Stonewall	7	2,280	+0.31%	83.2%	7.0%	0.8%	4.0%	0.0%	1.7%	0.2%	3.2%
Rosedale	2	666	+0.30%	58.0%	38.9%	0.6%	0.8%	0.0%	0.5%	0.9%	0.5%
Doyline	2	676	+0.30%	75.7%	16.9%	0.6%	3.0%	0.0%	0.6%	0.1%	3.1%
Welcome	2	674	+0.30%	4.0%	94.0%	0.0%	0.1%	0.0%	0.0%	0.7%	1.0%
Hayes	2	678	+0.30%	92.8%	2.2%	0.1%	1.3%	0.0%	0.3%	0.1%	3.1%

Census Place	Pop. Change	Adj. Pop.	Change (%)	W%	B+B& W%	AS+ AS& W%	AI+AI& W%	PI+PI &W%	OTH+ OTH& W%	OTH MULT I%	H%
Elton	3	995	+0.30%	49.7%	39.7%	0.9%	4.5%	0.0%	0.7%	1.8%	2.6%
Catahoula	3	991	+0.30%	96.2%	1.3%	0.1%	0.8%	0.0%	0.5%	0.2%	0.9%
Varnado	1	331	+0.30%	82.1%	12.7%	0.0%	2.4%	0.0%	0.0%	0.6%	2.1%
Red Chute	20	7,085	+0.28%	72.7%	12.3%	1.7%	2.3%	0.1%	0.8%	0.4%	9.7%
Deville	5	1,766	+0.28%	92.4%	0.5%	0.6%	4.6%	0.0%	0.9%	0.0%	1.1%
Carencro	26	9,298	+0.28%	43.2%	48.1%	1.2%	0.6%	0.1%	0.8%	0.8%	5.3%
Barataria	3	1,060	+0.28%	84.3%	4.7%	2.3%	3.1%	0.0%	1.0%	0.7%	3.9%
Scott	21	8,140	+0.26%	68.8%	17.3%	2.0%	1.6%	0.1%	0.7%	0.5%	9.1%
Arabi	12	4,545	+0.26%	60.4%	16.5%	4.0%	1.8%	0.0%	2.1%	0.9%	14.2%
Prospect	1	381	+0.26%	91.1%	0.5%	0.5%	3.7%	0.0%	2.1%	1.1%	1.1%
Pierre Part	8	3,032	+0.26%	95.2%	0.5%	0.4%	1.0%	0.0%	0.1%	0.3%	2.4%
Perry	3	1,174	+0.26%	81.2%	7.5%	4.6%	1.0%	0.0%	0.2%	0.3%	5.2%
Metairie	366	143,873	+0.26%	62.1%	11.6%	4.4%	0.9%	0.0%	1.3%	0.5%	19.1%
Gueydan	3	1,168	+0.26%	82.8%	14.1%	0.0%	0.3%	0.0%	0.5%	0.3%	2.0%
St. Francisville	4	1,561	+0.26%	68.1%	22.5%	1.1%	2.1%	0.3%	1.0%	0.6%	4.2%
Melville	2	761	+0.26%	39.7%	57.2%	0.7%	0.5%	0.3%	0.8%	0.7%	0.3%
Folsom	2	771	+0.26%	65.0%	19.0%	0.4%	0.9%	0.0%	1.7%	0.7%	12.4%
Jena	11	4,166	+0.26%	58.6%	11.2%	2.6%	1.9%	0.1%	0.6%	0.2%	24.6%
Chalmette	57	21,619	+0.26%	50.8%	27.0%	3.6%	1.3%	0.1%	1.5%	0.7%	15.0%
Swartz	11	4,365	+0.25%	66.9%	26.5%	0.9%	1.9%	0.0%	0.7%	0.6%	2.4%
Blanchard	9	3,547	+0.25%	76.0%	15.5%	0.8%	2.9%	0.1%	1.0%	0.4%	3.3%
Henderson	4	1,621	+0.25%	61.4%	11.1%	7.4%	0.9%	0.0%	0.8%	0.4%	18.0%
Killian	3	1,180	+0.25%	80.2%	12.1%	0.3%	1.8%	0.2%	1.1%	0.3%	3.9%
Luling	33	13,749	+0.24%	71.1%	16.4%	1.5%	1.6%	0.0%	1.0%	0.5%	7.9%
Mandeville	32	13,224	+0.24%	80.8%	4.8%	3.1%	1.4%	0.1%	1.7%	0.5%	7.8%
Chackbay	13	5,383	+0.24%	88.3%	5.8%	0.5%	1.3%	0.0%	0.7%	0.1%	3.2%
Montz	5	2,111	+0.24%	74.3%	15.4%	1.0%	1.5%	0.0%	1.6%	0.6%	5.6%
St. Joseph	2	833	+0.24%	18.3%	78.3%	0.4%	0.6%	0.0%	0.5%	0.2%	1.7%
Carlyss	12	5,113	+0.24%	81.4%	7.2%	3.4%	2.1%	0.2%	0.5%	0.5%	4.9%
Brusly	6	2,584	+0.23%	69.4%	23.7%	0.7%	0.9%	0.0%	0.7%	0.1%	4.5%
Bayou Gauche	5	2,166	+0.23%	93.4%	1.0%	0.5%	2.2%	0.0%	0.4%	0.2%	2.3%
Village St. George	18	7,695	+0.23%	54.6%	28.7%	4.4%	0.8%	0.0%	1.3%	0.4%	9.8%
Bayou Country Club	3	1,307	+0.23%	91.1%	3.0%	0.9%	1.0%	0.1%	0.5%	0.2%	3.3%
Port Barre	4	1,755	+0.23%	64.9%	31.5%	0.2%	0.7%	0.0%	0.3%	0.9%	1.5%
Leonville	2	870	+0.23%	59.9%	37.0%	0.2%	0.5%	0.0%	0.5%	0.3%	1.6%
Branch	1	432	+0.23%	77.3%	16.2%	0.0%	1.2%	0.0%	0.7%	0.2%	4.4%
Ossun	5	2,150	+0.23%	48.7%	45.2%	0.1%	0.4%	0.0%	1.0%	0.7%	3.9%
Fordoche	2	912	+0.22%	86.7%	11.1%	0.3%	0.5%	0.0%	0.4%	0.1%	0.8%

Census Place	Pop. Change	Adj. Pop.	Change (%)	W%	B+B& W%	AS+ AS& W%	AI+AI& W%	PI+PI &W%	OTH+ OTH& W%	OTH MULT I%	H%
Moss Bluff	27	12,549	+0.22%	80.9%	9.4%	1.8%	1.7%	0.0%	1.1%	0.4%	4.6%
Laplace	64	28,905	+0.22%	31.8%	55.3%	1.2%	0.9%	0.0%	0.8%	0.6%	9.4%
Lutcher	7	3,140	+0.22%	44.8%	52.6%	0.4%	0.2%	0.0%	0.5%	0.2%	1.3%
Mathews	5	2,278	+0.22%	89.8%	2.6%	0.5%	2.8%	0.0%	0.2%	0.3%	3.9%
Cade	4	1,878	+0.21%	55.2%	34.3%	3.7%	0.7%	0.1%	0.7%	0.7%	4.6%
Eden Isle	16	7,798	+0.21%	74.2%	11.8%	4.5%	1.5%	0.0%	1.2%	0.6%	6.2%
Livingston	4	1,881	+0.21%	91.2%	2.7%	0.4%	1.9%	0.1%	0.7%	0.2%	2.9%
Vienna	1	484	+0.21%	84.1%	4.8%	1.0%	2.7%	0.0%	1.0%	0.4%	6.0%
Claiborne	25	12,656	+0.20%	82.2%	7.6%	3.1%	2.1%	0.0%	1.0%	0.3%	3.6%
Erath	4	2,032	+0.20%	83.5%	7.8%	4.6%	0.8%	0.0%	0.2%	0.3%	2.6%
Simmesport	3	1,471	+0.20%	36.0%	60.0%	0.5%	0.8%	0.0%	0.3%	1.0%	1.4%
Sterlington	4	1,984	+0.20%	69.7%	21.6%	1.0%	1.5%	0.1%	1.3%	0.7%	4.1%
Mer Rouge	1	492	+0.20%	57.2%	39.1%	0.2%	1.0%	0.0%	0.4%	0.8%	1.2%
Gretna	34	17,848	+0.19%	41.2%	33.8%	3.3%	1.2%	0.1%	1.0%	0.7%	18.7%
Martin	1	525	+0.19%	90.5%	1.1%	0.0%	3.8%	0.0%	0.8%	0.6%	3.2%
Central	55	29,620	+0.19%	78.9%	12.2%	1.2%	1.8%	0.0%	1.1%	0.3%	4.6%
Belle Chasse	19	10,598	+0.18%	75.8%	6.6%	4.2%	2.2%	0.2%	1.1%	0.4%	9.5%
Eastwood	8	4,398	+0.18%	75.3%	8.9%	1.8%	3.3%	0.1%	1.1%	0.5%	9.2%
Grand Point	4	2,245	+0.18%	76.0%	21.5%	0.1%	0.6%	0.0%	0.2%	0.3%	1.4%
Bourg	4	2,379	+0.17%	86.2%	1.6%	0.4%	7.0%	0.0%	1.1%	0.3%	3.5%
Destrehan	19	11,359	+0.17%	68.7%	17.4%	1.9%	1.2%	0.1%	0.9%	0.5%	9.3%
Zachary	33	19,349	+0.17%	46.7%	46.0%	1.8%	1.2%	0.0%	0.8%	0.5%	2.9%
Woodworth	3	1,765	+0.17%	83.7%	8.7%	1.1%	2.6%	0.1%	0.9%	0.3%	2.7%
Livonia	2	1,214	+0.17%	82.2%	11.6%	0.0%	1.6%	0.0%	0.8%	0.3%	3.5%
Addis	11	6,742	+0.16%	50.9%	40.7%	1.8%	1.2%	0.2%	0.7%	0.4%	4.0%
Elmwood	9	5,658	+0.16%	49.2%	28.8%	9.5%	1.0%	0.0%	1.1%	0.9%	9.6%
Port Allen	-8	4,931	-0.16%	33.6%	60.9%	0.5%	0.7%	0.0%	0.4%	0.9%	2.9%
Prairieville	52	33,249	+0.16%	70.7%	15.2%	3.1%	1.1%	0.1%	1.0%	0.4%	8.3%
Lafourche Crossing	4	2,431	+0.16%	75.3%	15.1%	0.7%	3.6%	0.1%	0.7%	0.5%	4.0%
Egan	1	619	+0.16%	94.8%	0.3%	0.0%	0.6%	0.0%	1.8%	0.0%	2.4%
Lakeshore	3	1,991	+0.15%	49.6%	43.6%	1.5%	1.0%	0.1%	0.7%	0.7%	2.9%
Harahan	14	9,130	+0.15%	81.4%	4.7%	1.8%	1.6%	0.0%	1.2%	0.3%	9.0%
Prien	12	7,757	+0.15%	76.7%	9.1%	5.0%	1.3%	0.3%	1.0%	0.6%	6.1%
Westminster	4	2,795	+0.14%	76.4%	9.2%	6.2%	0.9%	0.0%	1.4%	0.7%	5.2%
Ball	5	3,966	+0.13%	77.2%	12.7%	0.9%	3.3%	0.1%	1.3%	0.4%	4.0%
Grand Coteau	1	777	+0.13%	31.8%	64.0%	0.1%	0.3%	0.0%	0.4%	0.1%	3.2%
Mooringsport	1	749	+0.13%	76.2%	14.0%	0.3%	4.5%	0.7%	1.2%	0.1%	2.9%
Inniswold	7	5,994	+0.12%	65.8%	21.2%	5.4%	0.7%	0.1%	1.0%	0.5%	5.4%
Gillis	1	801	+0.12%	83.9%	5.1%	0.6%	1.2%	0.0%	1.4%	1.1%	6.6%
Madisonville	1	851	+0.12%	87.2%	4.5%	1.9%	0.7%	0.0%	1.8%	0.0%	4.0%
Lafayette	145	121,519	+0.12%	56.9%	31.5%	3.0%	1.0%	0.0%	0.8%	0.6%	6.2%
Delcambre	2	1,795	+0.11%	74.0%	16.7%	0.1%	2.0%	0.1%	0.8%	0.6%	5.7%

Census Place	Pop. Change	Adj. Pop.	Change (%)	W%	B+B& W%	AS+ AS& W%	AI+AI& W%	PI+PI &W%	OTH+ OTH& W%	OTH MULT I%	H%
Lydia	1	893	+0.11%	75.1%	14.1%	3.4%	1.3%	0.0%	1.0%	0.3%	4.7%
Kraemer	1	878	+0.11%	90.5%	1.6%	0.3%	1.0%	0.0%	1.3%	0.1%	5.1%
Paulina	2	1,780	+0.11%	85.5%	10.5%	0.2%	0.7%	0.0%	0.8%	0.2%	2.1%
Jean Lafitte	2	1,811	+0.11%	82.4%	1.8%	3.3%	5.7%	0.1%	0.7%	0.9%	5.1%
Moreauville	1	985	+0.10%	52.5%	39.2%	0.3%	2.3%	0.2%	0.4%	2.6%	2.3%
Start	1	983	+0.10%	89.5%	6.3%	0.0%	2.0%	0.0%	0.5%	0.3%	1.3%
Slaughter	1	1,036	+0.10%	84.8%	7.8%	0.3%	3.1%	0.2%	1.0%	1.0%	1.8%
Watson	1	957	+0.10%	88.7%	2.1%	0.6%	2.4%	0.2%	0.9%	0.4%	4.6%
Arnaudville	1	1,010	+0.10%	83.7%	12.6%	0.4%	0.4%	0.2%	0.2%	0.4%	2.1%
Maurice	2	2,120	+0.09%	80.4%	7.8%	5.4%	0.8%	0.1%	0.6%	0.0%	5.0%
Lockport Heights	1	1,172	+0.09%	89.2%	1.5%	0.5%	3.8%	0.0%	1.6%	0.2%	3.2%
Broussard	12	13,429	+0.09%	72.8%	16.7%	2.6%	1.2%	0.1%	1.0%	0.5%	5.2%
South Vacherie	3	3,391	+0.09%	63.5%	32.7%	0.2%	0.6%	0.0%	0.7%	0.6%	1.7%
Old Jefferson	6	7,345	+0.08%	64.4%	20.6%	4.0%	1.1%	0.1%	1.1%	0.7%	8.0%
Presquille	1	1,704	+0.06%	89.1%	3.0%	0.5%	4.8%	0.1%	0.4%	0.4%	1.8%
Youngsville	10	15,939	+0.06%	78.4%	9.9%	2.8%	1.3%	0.1%	0.6%	0.4%	6.3%
Bastrop	6	9,697	+0.06%	19.8%	77.0%	0.4%	0.8%	0.0%	0.3%	0.7%	1.0%
Shenandoah	12	19,304	+0.06%	68.2%	17.7%	5.6%	1.1%	0.0%	1.1%	0.5%	5.7%
Milton	1	2,591	+0.04%	88.3%	4.7%	1.4%	0.9%	0.0%	0.7%	0.2%	3.7%
St. Martinville	-2	5,377	-0.04%	34.4%	61.5%	0.5%	0.6%	0.0%	0.5%	0.5%	2.0%
Oak Hills Place	4	9,243	+0.04%	72.0%	14.6%	5.8%	0.9%	0.0%	1.0%	0.5%	5.1%
Natchitoches	-6	18,033	-0.03%	35.3%	56.0%	0.8%	1.1%	0.1%	0.8%	0.9%	5.0%
Fort Polk South	1	7,951	+0.01%	53.4%	18.5%	4.2%	1.6%	2.0%	1.4%	1.4%	17.6%
Fort Jesup	0	494	+0.00%	79.4%	7.1%	0.2%	5.9%	0.0%	0.4%	0.6%	6.5%
Fort Polk North	0	2,179	+0.00%	55.9%	13.8%	3.1%	2.5%	0.7%	0.4%	1.2%	22.3%
Bayou Corne	0	32	+0.00%	93.8%	6.2%	0.0%	0.0%	0.0%	0.0%	0.0%	0.0%
Wallace	0	755	+0.00%	8.1%	89.7%	0.0%	0.4%	0.0%	0.3%	0.5%	1.1%
Forest	0	304	+0.00%	85.2%	3.9%	0.0%	1.0%	0.0%	0.3%	0.0%	9.5%
Atlanta	0	149	+0.00%	71.8%	22.1%	0.0%	2.0%	2.0%	0.7%	0.0%	1.3%
Triumph	0	268	+0.00%	56.7%	17.9%	14.9 %	4.9%	0.0%	1.9%	0.0%	3.7%
Hall Summit	0	268	+0.00%	74.6%	20.1%	0.0%	3.0%	0.0%	0.0%	0.7%	1.5%
Delta	0	232	+0.00%	83.2%	11.6%	0.0%	0.0%	0.0%	1.7%	0.0%	3.4%
Mermentau	0	516	+0.00%	78.3%	19.0%	0.0%	1.2%	0.0%	0.0%	0.0%	1.6%
Midland	0	249	+0.00%	94.0%	0.8%	0.0%	1.2%	0.0%	1.2%	0.0%	2.8%
Mount Lebanon	0	66	+0.00%	56.1%	42.4%	0.0%	0.0%	0.0%	0.0%	1.5%	0.0%
Mound	0	12	+0.00%	75.0%	8.3%	0.0%	0.0%	0.0%	0.0%	0.0%	16.7%

Census Place	Pop. Change	Adj. Pop.	Change (%)	W%	B+B& W%	AS+ AS& W%	AI+AI& W%	PI+PI &W%	OTH+ OTH& W%	OTH MULT I%	H%
Ashland	0	194	+0.00%	83.0%	11.3%	0.0%	1.0%	1.5%	0.0%	0.0%	3.1%
Moonshine	0	168	+0.00%	4.8%	89.9%	0.0%	0.0%	0.0%	0.0%	1.8%	3.6%
Athens	0	237	+0.00%	66.7%	28.7%	0.8%	1.7%	0.0%	0.4%	0.4%	1.3%
Morrow	0	149	+0.00%	14.8%	81.9%	1.3%	0.0%	0.0%	0.0%	2.0%	0.0%
Goldonna	0	428	+0.00%	95.6%	0.2%	0.0%	1.6%	0.2%	1.2%	0.2%	0.9%
Grand Cane	0	217	+0.00%	77.4%	17.1%	0.0%	1.4%	0.0%	1.8%	0.5%	1.8%
Glencoe	0	132	+0.00%	10.6%	84.8%	0.0%	0.8%	0.0%	0.0%	0.0%	3.8%
Lillie	0	111	+0.00%	51.4%	40.5%	0.0%	0.9%	0.0%	0.0%	0.0%	7.2%
Creola	0	242	+0.00%	72.7%	16.9%	0.8%	1.7%	0.0%	0.8%	2.5%	4.5%
Longstreet	0	115	+0.00%	78.3%	11.3%	0.9%	8.7%	0.0%	0.0%	0.9%	0.0%
Bordelonville	0	458	+0.00%	89.7%	8.7%	0.2%	0.2%	0.0%	0.2%	0.4%	0.4%
Shongaloo	0	151	+0.00%	93.4%	2.0%	0.7%	1.3%	0.0%	1.3%	1.3%	0.0%
Elizabeth	0	417	+0.00%	91.4%	2.6%	0.5%	3.8%	0.0%	1.2%	0.0%	0.5%
Ruston	1	22,167	+0.00%	50.5%	40.8%	3.1%	1.1%	0.1%	0.5%	0.4%	3.4%
Edgefield	0	204	+0.00%	60.3%	35.3%	0.0%	2.0%	0.0%	0.0%	1.5%	1.0%
Robeline	0	117	+0.00%	82.9%	6.0%	0.0%	2.6%	0.0%	1.7%	1.7%	5.1%
Roanoke	0	491	+0.00%	74.5%	22.6%	0.0%	0.6%	0.0%	0.4%	0.2%	1.6%
Rio	0	137	+0.00%	86.9%	0.7%	0.7%	5.8%	0.0%	4.4%	0.0%	1.5%
Bryceland	0	87	+0.00%	74.7%	14.9%	1.1%	0.0%	1.1%	3.4%	2.3%	2.3%
Taft	0	61	+0.00%	82.0%	3.3%	0.0%	6.6%	0.0%	0.0%	1.6%	6.6%
Reeves	0	221	+0.00%	94.6%	1.4%	0.9%	1.8%	0.0%	0.9%	0.0%	0.5%
Quitman	0	160	+0.00%	92.5%	1.2%	0.6%	0.0%	0.0%	2.5%	0.0%	3.1%
Provencal	0	528	+0.00%	90.2%	1.5%	0.9%	2.8%	0.0%	1.7%	0.4%	2.5%
Powhatan	0	101	+0.00%	22.8%	73.3%	1.0%	0.0%	0.0%	0.0%	0.0%	3.0%
Echo	0	352	+0.00%	87.8%	4.8%	0.0%	2.8%	0.0%	2.3%	0.9%	1.4%
Calvin	0	242	+0.00%	73.6%	22.3%	0.8%	3.3%	0.0%	0.0%	0.0%	0.0%
Cankton	0	583	+0.00%	81.8%	12.3%	0.2%	1.0%	0.0%	0.2%	0.2%	4.3%
Lisbon	0	173	+0.00%	65.9%	33.5%	0.0%	0.0%	0.0%	0.0%	0.0%	0.6%
Junction City	0	437	+0.00%	48.1%	46.9%	0.2%	0.2%	0.0%	1.1%	0.5%	3.0%
Sikes	0	112	+0.00%	85.7%	1.8%	0.9%	3.6%	0.0%	0.0%	1.8%	6.2%
Oak Grove	0	1,441	+0.00%	64.0%	28.9%	0.1%	1.4%	0.0%	0.5%	0.3%	4.8%
Downsville	0	120	+0.00%	84.2%	0.0%	4.2%	4.2%	0.0%	0.8%	0.0%	6.7%
Heflin	0	213	+0.00%	84.0%	7.0%	0.0%	2.3%	0.0%	2.3%	1.4%	2.8%
New Orleans Station	0	2,508	+0.00%	46.3%	25.4%	4.9%	1.9%	1.0%	1.2%	1.2%	18.1%
Sugartown	0	33	+0.00%	87.9%	3.0%	0.0%	0.0%	0.0%	0.0%	3.0%	6.1%
Hester	0	483	+0.00%	94.4%	2.9%	0.0%	0.2%	0.0%	0.2%	0.4%	1.9%
Belcher	0	248	+0.00%	78.2%	20.6%	0.0%	0.8%	0.0%	0.0%	0.0%	0.4%
Fisher	0	197	+0.00%	57.9%	33.0%	0.0%	2.5%	0.0%	1.5%	1.5%	3.6%
Hornbeck	0	430	+0.00%	94.7%	0.2%	0.2%	2.3%	0.5%	1.2%	0.7%	0.2%
Choudrant	0	989	+0.00%	85.1%	7.0%	0.7%	2.7%	0.4%	0.7%	0.4%	2.9%
Marthaville	0	90	+0.00%	90.0%	0.0%	0.0%	2.2%	0.0%	1.1%	3.3%	3.3%

Census Place	Pop. Change	Adj. Pop.	Change (%)	W%	B+B& W%	AS+ AS& W%	AI+AI& W%	PI+PI &W%	OTH+ OTH& W%	OTH MULT I%	H%
Pleasure Bend	0	212	+0.00%	88.2%	4.7%	0.0%	2.4%	0.0%	0.9%	0.0%	3.8%
Belmont	0	305	+0.00%	81.6%	4.3%	2.6%	7.2%	0.0%	1.6%	0.3%	2.3%
Spokane	0	378	+0.00%	93.4%	4.5%	0.0%	0.3%	0.0%	0.3%	0.0%	1.6%
Eros	0	130	+0.00%	86.2%	2.3%	0.0%	8.5%	0.0%	0.0%	0.0%	3.1%
North Hodge	0	296	+0.00%	57.1%	24.3%	4.4%	3.0%	0.0%	8.4%	0.3%	2.4%
Dorseyville	0	159	+0.00%	0.0%	100.0 %	0.0%	0.0%	0.0%	0.0%	0.0%	0.0%
Sorrel	0	711	+0.00%	46.8%	47.1%	0.1%	0.7%	0.0%	1.0%	0.4%	3.8%
Jamestown	0	100	+0.00%	94.0%	2.0%	0.0%	2.0%	1.0%	1.0%	0.0%	0.0%
Noble	0	200	+0.00%	51.0%	2.0%	0.0%	35.0%	0.0%	0.0%	1.5%	10.5%