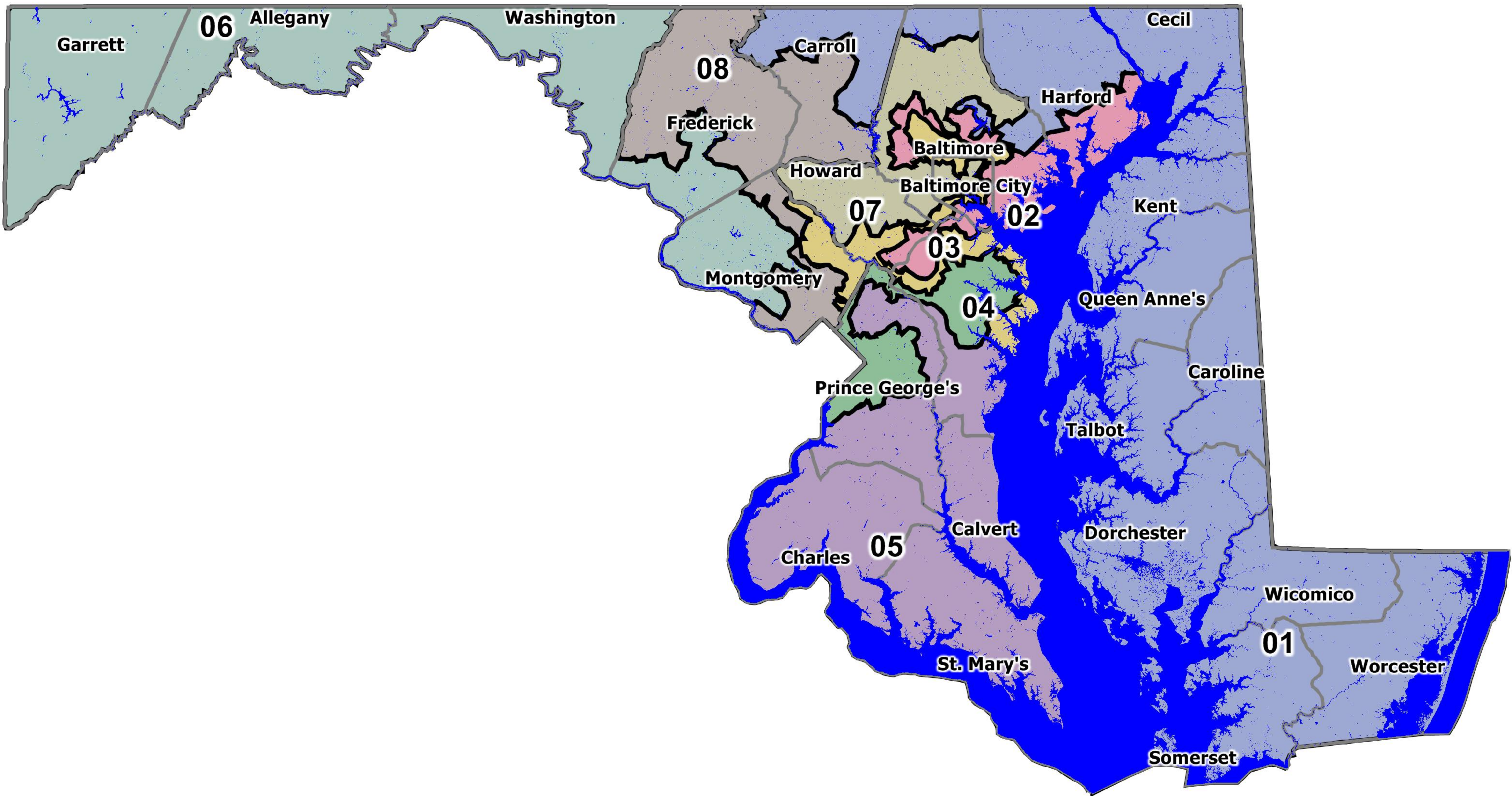
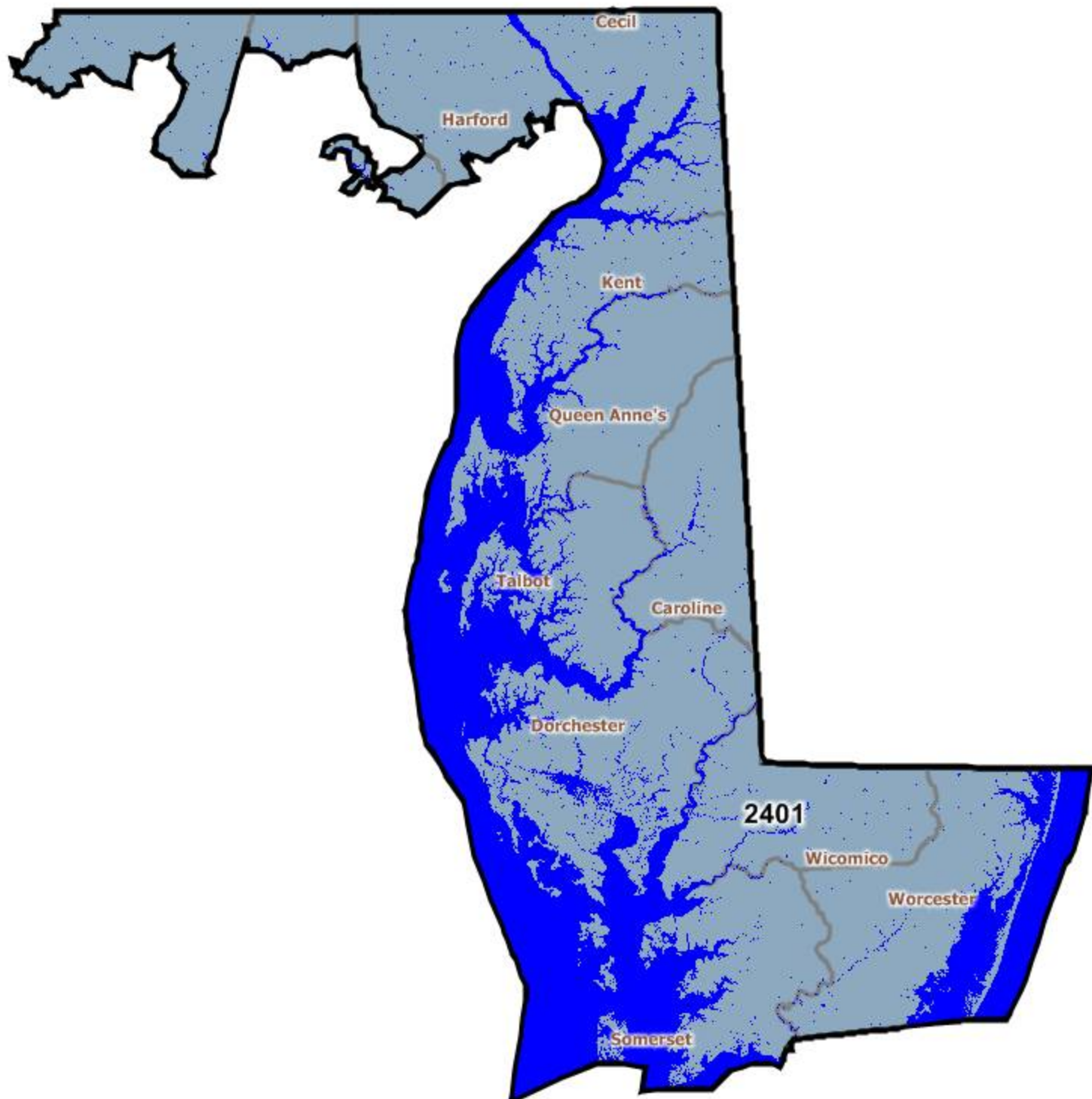
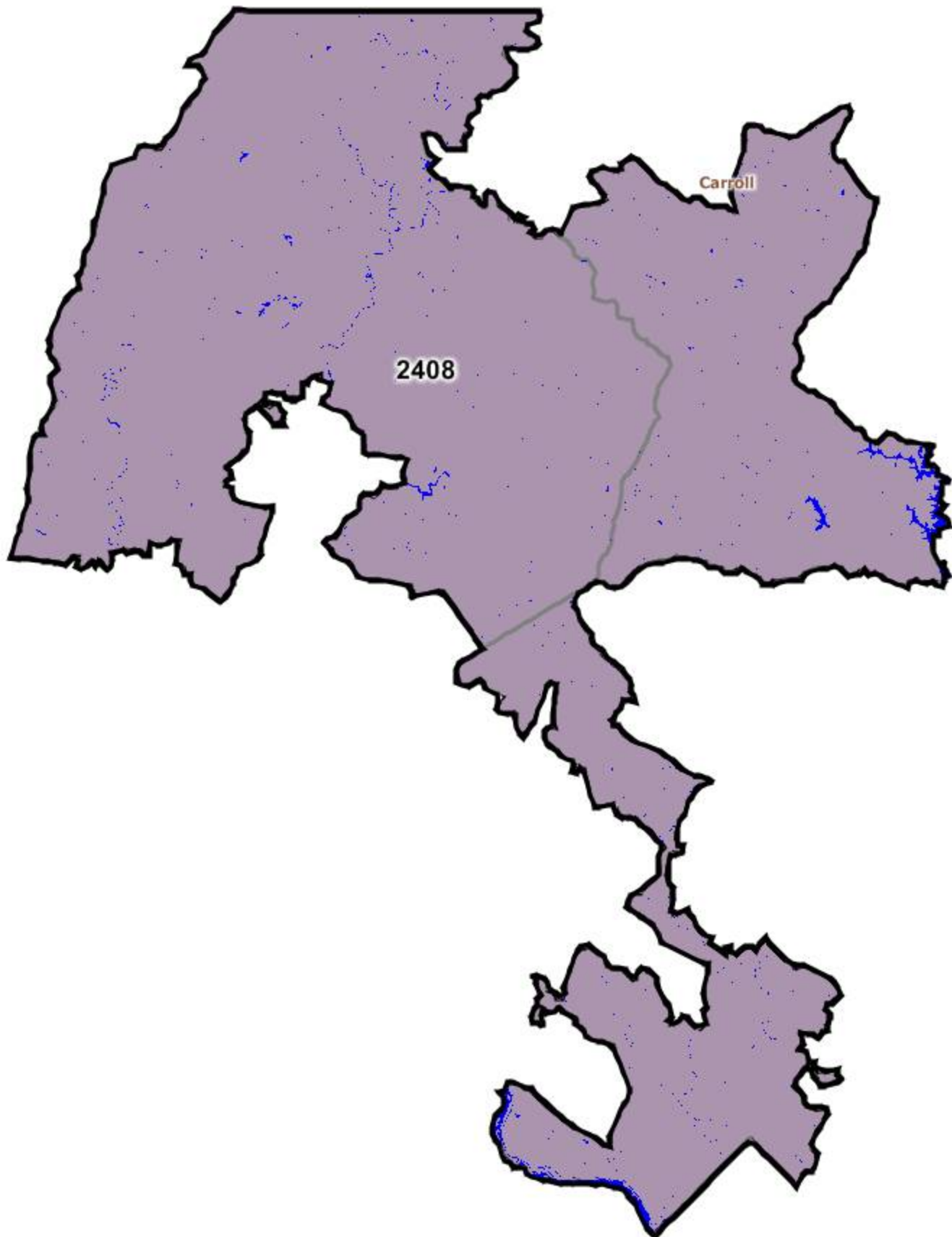


Attachment C

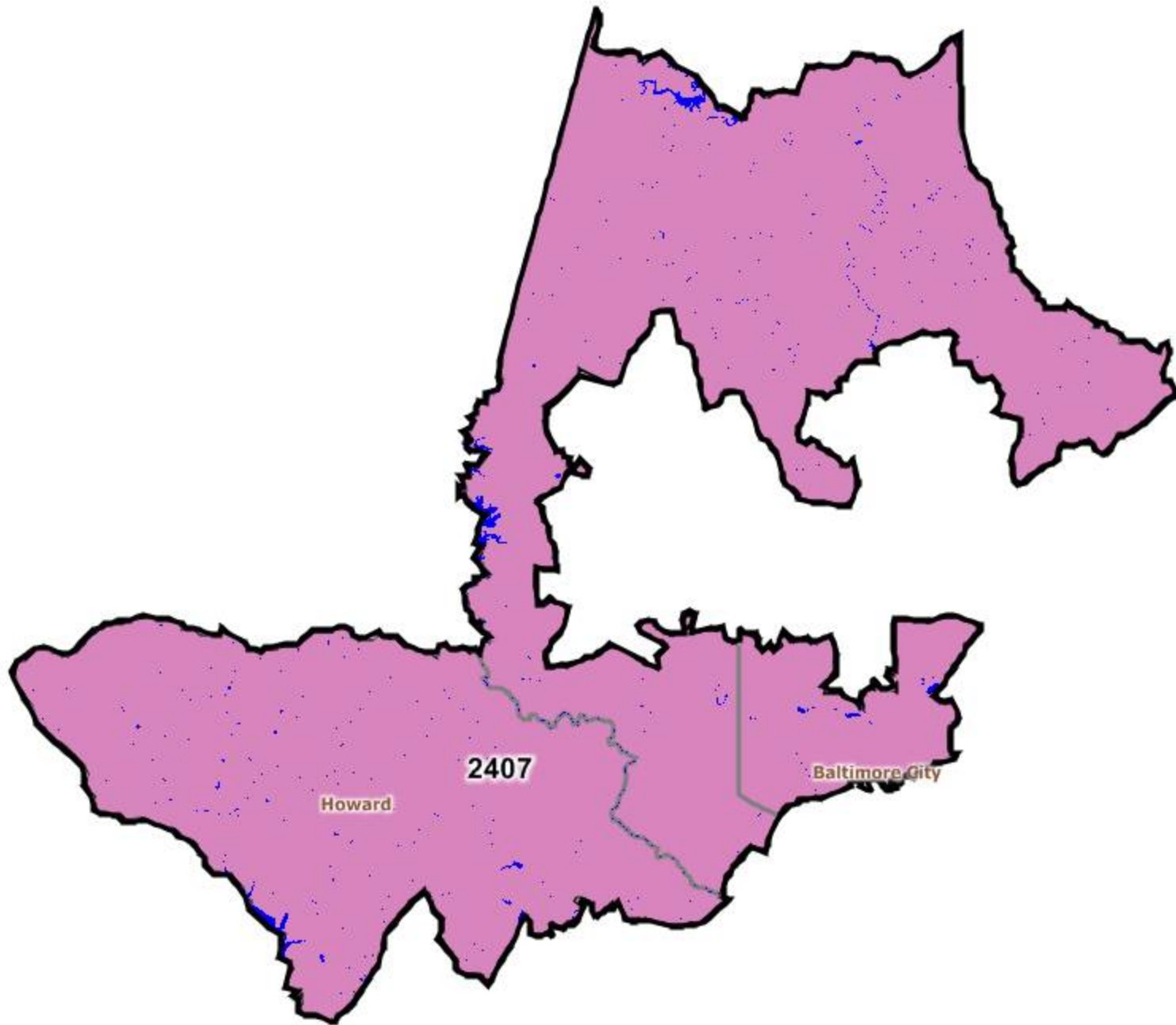


District: 2401

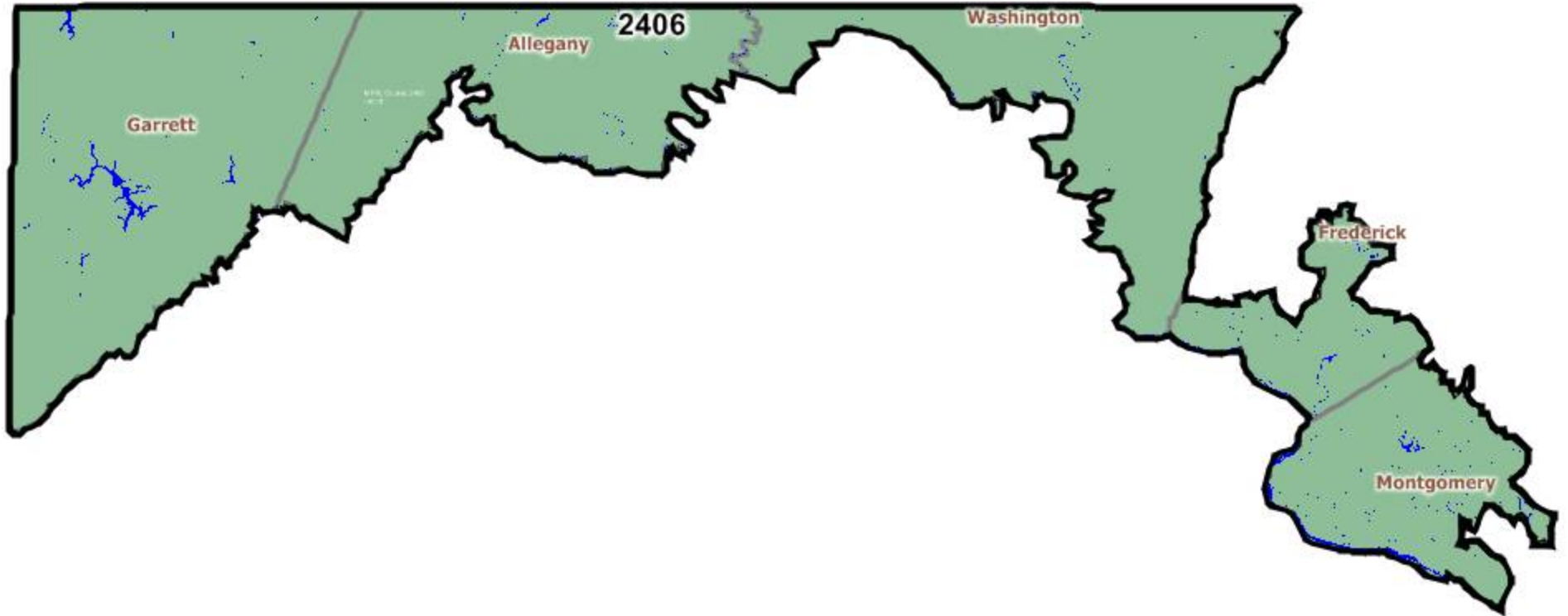


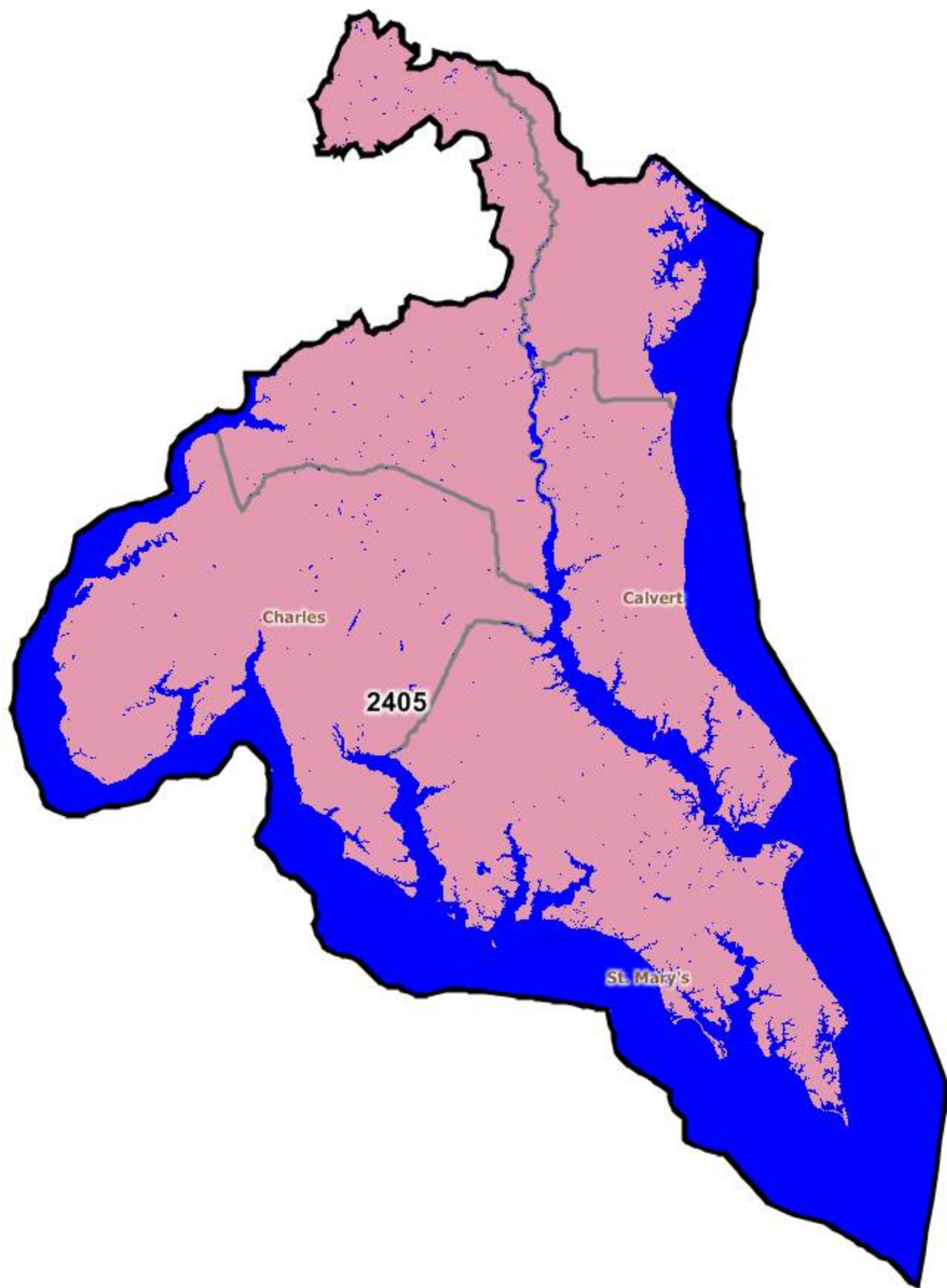


District: 2407

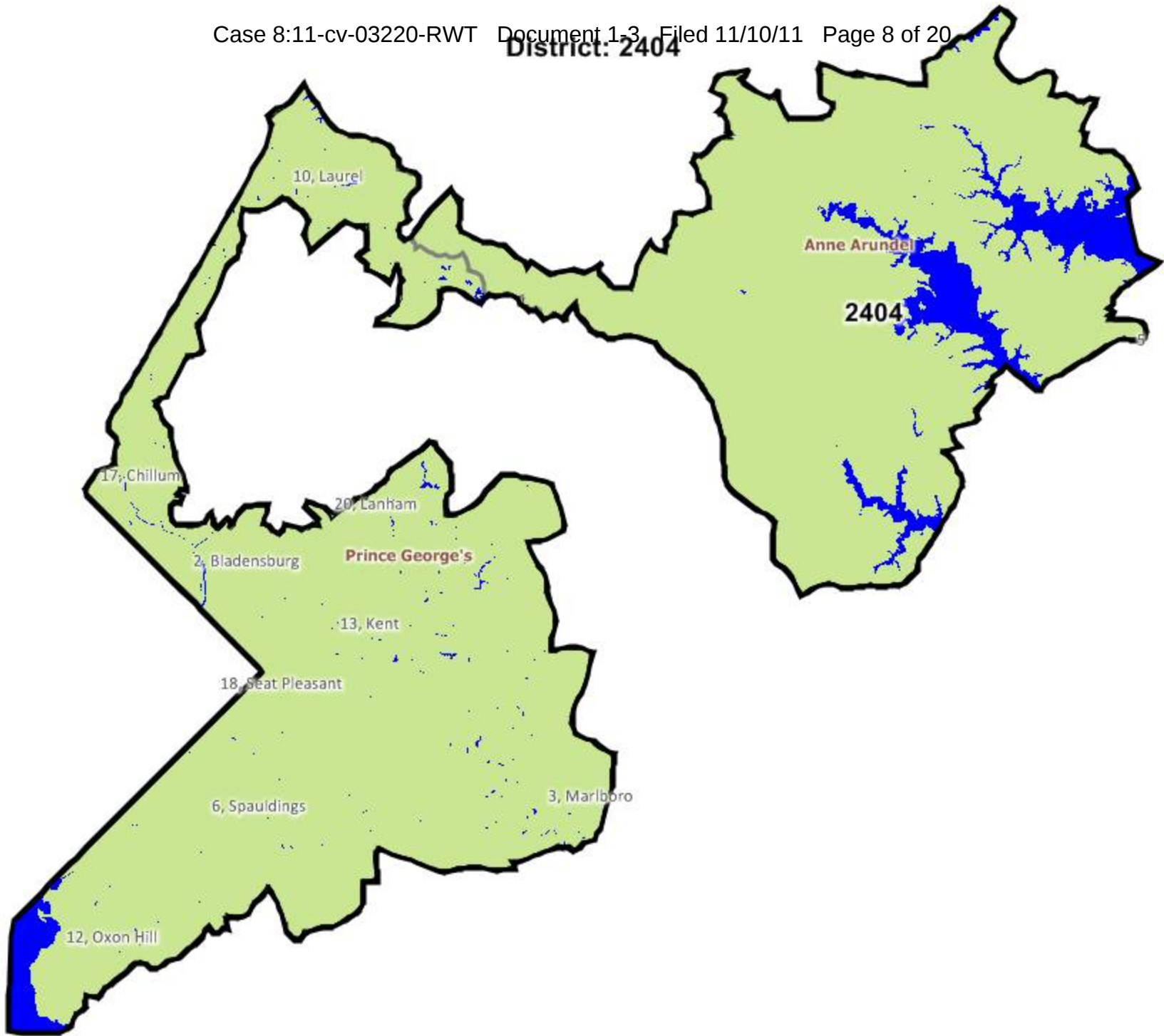


District: 2406

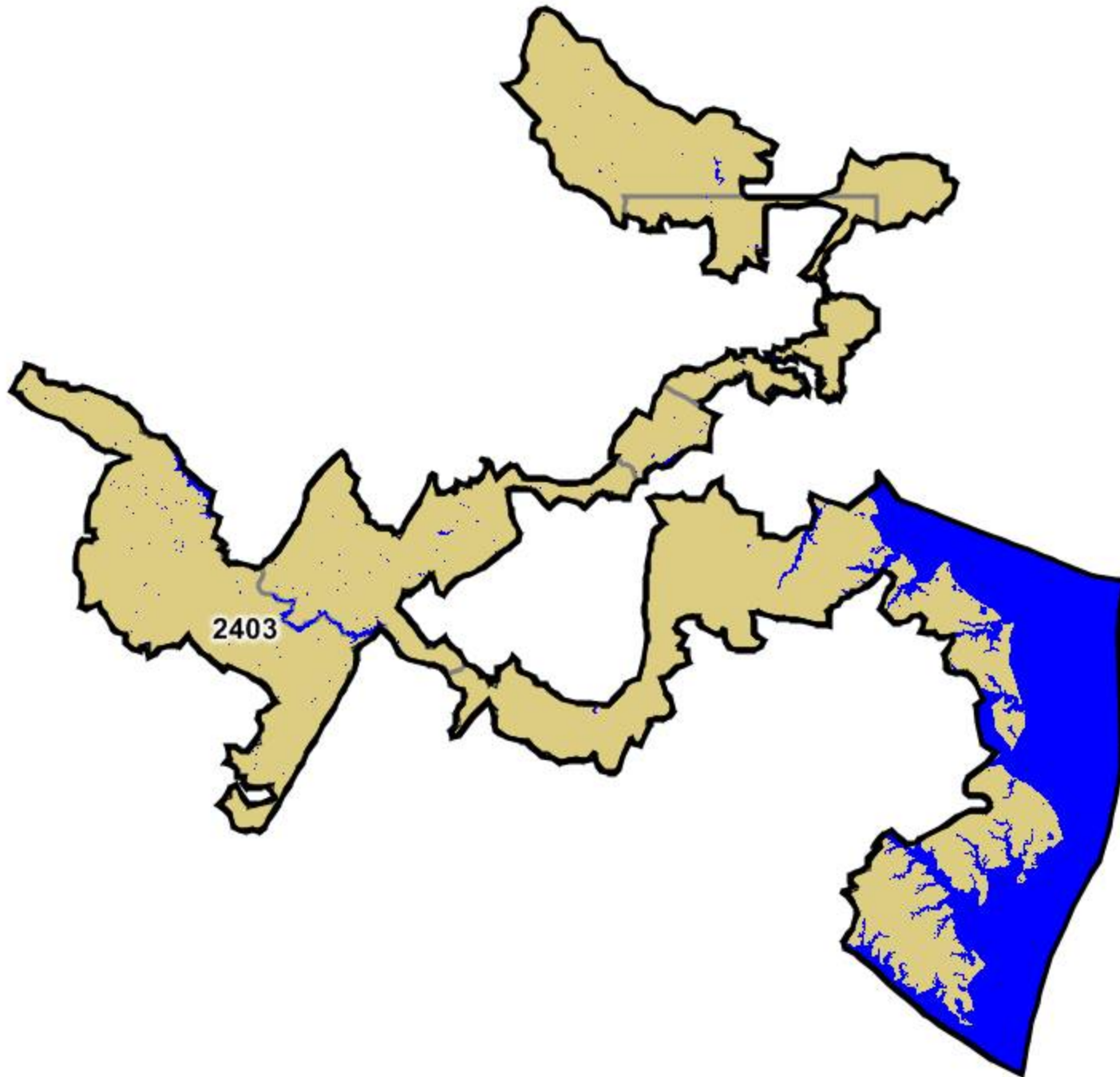




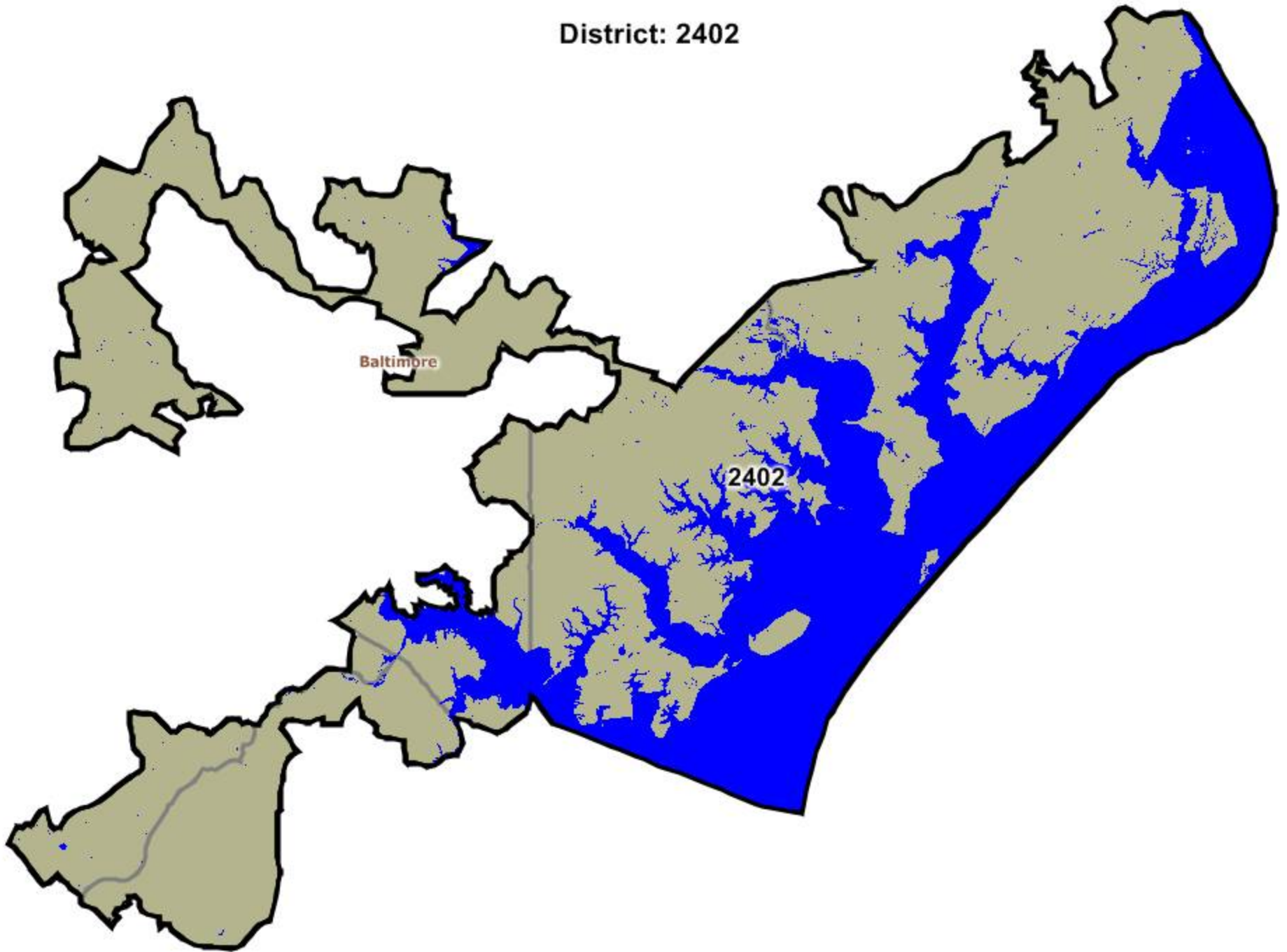
District: 2404



District: 2403



District: 2402



Measures of Compactness

11/1/2011

Sum	N/A	N/A	N/A
Min	0.20	0.13	0.10
Max	0.77	0.65	0.43
Mean	0.49	0.35	0.22
Std. Dev.	0.19	0.15	0.10

DISTRICT	Population Polygon	Population Circle	Ehrenburg
01	0.20	0.13	0.23
02	0.36	0.31	0.24
03	0.31	0.20	0.10
04	0.63	0.37	0.21
05	0.60	0.38	0.43
06	0.77	0.65	0.19
07	0.53	0.38	0.15
08	0.53	0.34	0.21

Measures of Compactness

11/1/2011

Sum	N/A	N/A	3,081.51	N/A
Min	0.14	1.69	N/A	0.03
Max	0.36	5.09	N/A	0.31
Mean	0.27	3.16	N/A	0.11
Std. Dev.	0.08	0.99	N/A	0.09

DISTRICT	Reock	Schwartzberg	Perimeter	Polsby-Popper
01	0.27	2.37	657.20	0.16
02	0.25	3.65	319.97	0.06
03	0.22	5.09	392.10	0.03
04	0.25	3.15	205.58	0.09
05	0.36	1.69	303.13	0.31
06	0.14	3.17	576.03	0.08
07	0.36	3.02	264.94	0.09
08	0.33	3.12	362.56	0.08

SBI Adjusted Population

District	Adj_White	% Adj_White	Adj_AP_Wht	% Adj_AP_Wht	Adj_Black	% Adj_Black	Adj_AP_Blk	% Adj_AP_Blk	Adj_AmIndian	% Adj_AmIndian	Adj_AP_Ind	% Adj_AP_Ind	Adj_Asian	% Adj_Asian	Adj_AP_Asn	% Adj_AP_Asn
01	601,502	83.36%	613,405	85.01%	82,401	11.42%	89,154	12.36%	1,747	0.24%	5,282	0.73%	13,340	1.85%	16,630	2.30%
02	415,117	57.53%	432,784	59.98%	232,443	32.22%	245,855	34.07%	2,928	0.41%	8,456	1.17%	33,284	4.61%	39,301	5.45%
03	478,526	66.32%	495,473	68.67%	149,217	20.68%	159,060	22.04%	2,360	0.33%	7,023	0.97%	46,330	6.42%	53,554	7.42%
04	224,916	31.17%	239,211	33.15%	394,687	54.70%	406,357	56.32%	3,373	0.47%	8,826	1.22%	22,175	3.07%	26,828	3.72%
05	375,798	52.08%	393,273	54.51%	266,813	36.98%	280,332	38.85%	3,262	0.45%	9,686	1.34%	27,603	3.83%	34,227	4.74%
06	503,603	69.80%	524,295	72.66%	87,435	12.12%	98,056	13.59%	2,213	0.31%	6,288	0.87%	72,088	9.99%	80,528	11.16%
07	252,206	34.95%	263,670	36.54%	401,552	55.65%	411,205	56.99%	2,044	0.28%	6,526	0.90%	41,352	5.73%	46,929	6.50%
08	507,248	70.30%	526,408	72.96%	84,811	11.75%	92,941	12.88%	2,492	0.35%	6,569	0.91%	62,676	8.69%	72,042	9.98%

SBI Adjusted Population

District	Adj_Hawaiian	% Adj_Hawaiian	Adj_AP_Hwn	% Adj_AP_Hwn	Adj_Other	% Adj_Other	Adj_AP_Oth	% Adj_AP_Oth
01	301	0.04%	759	0.11%	8,903	1.23%	10,672	1.48%
02	459	0.06%	1,417	0.20%	14,875	2.06%	18,406	2.55%
03	537	0.07%	1,393	0.19%	23,651	3.28%	27,923	3.87%
04	479	0.07%	1,518	0.21%	54,974	7.62%	62,186	8.62%
05	429	0.06%	1,307	0.18%	24,677	3.42%	28,488	3.95%
06	354	0.05%	1,171	0.16%	31,293	4.34%	37,556	5.21%
07	254	0.04%	939	0.13%	7,949	1.10%	10,415	1.44%
08	344	0.05%	1,322	0.18%	40,502	5.61%	47,729	6.61%

SBP Adjusted VAP

District	White	% White	Adj_18+_AP_Wht	% Adj_18+_AP_Wht	Black	% Black	Adj_18+_AP_Blk	% Adj_18+_AP_Blk	Indian	% Indian	Adj_18+_AP_Ind	% Adj_18+_AP_Ind	Asian	% Asian	Adj_18+_AP_Asn	% Adj_18+_AP_Asn
01	472,646	84.85%	477,601	85.74%	61,205	10.99%	63,295	11.36%	1,350	0.24%	3,824	0.69%	9,729	1.75%	11,296	2.03%
02	338,080	61.39%	345,720	62.78%	163,783	29.74%	169,051	30.70%	2,181	0.40%	5,838	1.06%	25,383	4.61%	28,529	5.18%
03	391,070	69.19%	399,623	70.71%	108,181	19.14%	112,529	19.91%	1,761	0.31%	5,038	0.89%	35,925	6.36%	39,848	7.05%
04	175,815	32.29%	184,191	33.83%	296,783	54.51%	303,561	55.76%	2,493	0.46%	6,466	1.19%	17,721	3.26%	20,285	3.73%
05	297,167	54.43%	305,592	55.97%	195,358	35.78%	201,408	36.89%	2,439	0.45%	6,770	1.24%	22,379	4.10%	25,825	4.73%
06	393,802	72.25%	403,309	73.99%	61,486	11.28%	65,293	11.98%	1,603	0.29%	4,353	0.80%	54,323	9.97%	58,522	10.74%
07	204,503	36.70%	210,470	37.77%	303,798	54.51%	309,185	55.48%	1,598	0.29%	4,880	0.88%	32,085	5.76%	35,196	6.32%
08	395,747	71.48%	405,761	73.29%	64,519	11.65%	68,560	12.38%	1,812	0.33%	4,707	0.85%	49,464	8.93%	54,081	9.77%

SBP Adjusted VAP

District	Hawaiin	% Hawaiin	Adj_18+_AP_Hwn	% Adj_18+_AP_Hwn	Other	% Other	Adj_18+_AP_Oth	% Adj_18+_AP_Oth
01	228	0.04%	499	0.09%	5,997	1.08%	6,958	1.25%
02	353	0.06%	964	0.18%	10,276	1.87%	12,333	2.24%
03	428	0.08%	1,016	0.18%	16,658	2.95%	19,415	3.44%
04	385	0.07%	1,127	0.21%	38,313	7.04%	43,287	7.95%
05	348	0.06%	866	0.16%	16,498	3.02%	18,795	3.44%
06	268	0.05%	814	0.15%	21,687	3.98%	25,576	4.69%
07	204	0.04%	685	0.12%	5,751	1.03%	7,427	1.33%
08	277	0.05%	1,004	0.18%	28,786	5.20%	33,731	6.09%

SB1 Non Adjusted Population

District	Deviation	% Deviation	Hispanic Origin	% Hispanic Origin	White	% White	AP_Wht	% AP_Wht	Black	% Black	AP_BlK	% AP_BlK	AmIndian	% AmIndian	AP_Ind
1	1121	0.16%	23,821	3.30%	601,474	83.23%	613,377	84.88%	83,551	11.56%	90,304	12.50%	1,746	0.24%	5,281
2	1918	0.27%	39,538	5.47%	415,277	57.40%	432,944	59.84%	234,180	32.37%	247,592	34.22%	2,929	0.40%	8,457
3	-1435	-0.20%	55,563	7.72%	477,913	66.37%	494,860	68.72%	148,404	20.61%	158,247	21.98%	2,360	0.33%	7,023
4	-1464	-0.20%	98,109	13.63%	224,699	31.21%	238,994	33.19%	393,453	54.64%	405,123	56.26%	3,372	0.47%	8,825
5	-1057	-0.15%	52,126	7.23%	375,415	52.11%	392,890	54.53%	266,141	36.94%	279,660	38.82%	3,262	0.45%	9,686
6	6919	0.96%	82,118	11.27%	505,160	69.35%	525,852	72.19%	92,769	12.74%	103,390	14.19%	2,216	0.30%	6,291
7	-4667	-0.65%	22,508	3.14%	252,265	35.19%	263,729	36.79%	396,835	55.36%	406,488	56.70%	2,043	0.28%	6,525
8	-15	0.00%	96,849	13.42%	507,081	70.28%	526,241	72.94%	84,965	11.78%	93,095	12.90%	2,492	0.35%	6,569

SB1 Non Adjusted Population

District	% AP_Ind	Asian	% Asian	AP_Asn	% AP_Asn	Hawaiian	% Hawaiian	AP_Hwn	% AP_Hwn	Other	% Other	AP_Oth	% AP_Oth
1	0.73%	13,340	1.85%	16,630	2.30%	301	0.04%	759	0.11%	8,903	1.23%	10,672	1.48%
2	1.17%	33,291	4.60%	39,308	5.43%	459	0.06%	1,417	0.20%	14,888	2.06%	18,419	2.55%
3	0.98%	46,324	6.43%	53,548	7.44%	537	0.07%	1,393	0.19%	23,648	3.28%	27,920	3.88%
4	1.23%	22,174	3.08%	26,827	3.73%	479	0.07%	1,518	0.21%	54,963	7.63%	62,175	8.63%
5	1.34%	27,602	3.83%	34,226	4.75%	429	0.06%	1,307	0.18%	24,676	3.42%	28,487	3.95%
6	0.86%	72,096	9.90%	80,536	11.06%	354	0.05%	1,171	0.16%	31,310	4.30%	37,573	5.16%
7	0.91%	41,349	5.77%	46,926	6.55%	254	0.04%	939	0.13%	7,944	1.11%	10,410	1.45%
8	0.91%	62,677	8.69%	72,043	9.98%	344	0.05%	1,322	0.18%	40,500	5.61%	47,727	6.61%

SBI Non Adjusted Voting Age Population

District	18+_Wht	% 18+_Wht	18+_AP_Wht	% 18+_AP_Wht	18+_Blk	% 18+_Blk	18+_AP_Blk	% 18+_AP_Blk	% 18+_Ind	18+_Ind	18+_AP_Ind	% 18+_AP_Ind	18+_Asn	% 18+_Asn	18+_AP_Asn	% 18+_AP_Asn
01	472,618	84.67%	477,573	85.56%	62,355	11.17%	64,445	11.55%	0.24%	1,349	3,823	0.68%	9,729	1.74%	11,296	2.02%
02	338,240	61.21%	345,880	62.59%	165,520	29.95%	170,788	30.91%	0.39%	2,182	5,839	1.06%	25,390	4.59%	28,536	5.16%
03	390,457	69.26%	399,010	70.78%	107,368	19.05%	111,716	19.82%	0.31%	1,761	5,038	0.89%	35,919	6.37%	39,842	7.07%
04	175,598	32.34%	183,974	33.88%	295,549	54.43%	302,327	55.68%	0.46%	2,492	6,465	1.19%	17,720	3.26%	20,284	3.74%
05	296,784	54.47%	305,209	56.01%	194,686	35.73%	200,736	36.84%	0.45%	2,439	6,770	1.24%	22,378	4.11%	25,824	4.74%
06	395,359	71.62%	404,866	73.35%	66,820	12.11%	70,627	12.80%	0.29%	1,606	4,356	0.79%	54,331	9.84%	58,530	10.60%
07	204,562	37.02%	210,529	38.10%	299,081	54.12%	304,468	55.10%	0.29%	1,597	4,879	0.88%	32,082	5.81%	35,193	6.37%
08	395,580	71.45%	405,594	73.26%	64,673	11.68%	68,714	12.41%	0.33%	1,812	4,707	0.85%	49,465	8.93%	54,082	9.77%

SBI Non Adjusted Voting Age Population

District	18+_Hwn	% 18+_Hwn	18+_AP_Hwn	% 18+_AP_Hwn	18+_Oth	% 18+_Oth	18+_AP_Oth	% 18+_AP_Oth
01	228	0.04%	499	0.09%	5,997	1.07%	6,958	1.25%
02	353	0.06%	964	0.17%	10,289	1.86%	12,346	2.23%
03	428	0.08%	1,016	0.18%	16,655	2.95%	19,412	3.44%
04	385	0.07%	1,127	0.21%	38,302	7.05%	43,276	7.97%
05	348	0.06%	866	0.16%	16,497	3.03%	18,794	3.45%
06	268	0.05%	814	0.15%	21,704	3.93%	25,593	4.64%
07	204	0.04%	685	0.12%	5,746	1.04%	7,422	1.34%
08	277	0.05%	1,004	0.18%	28,784	5.20%	33,729	6.09%