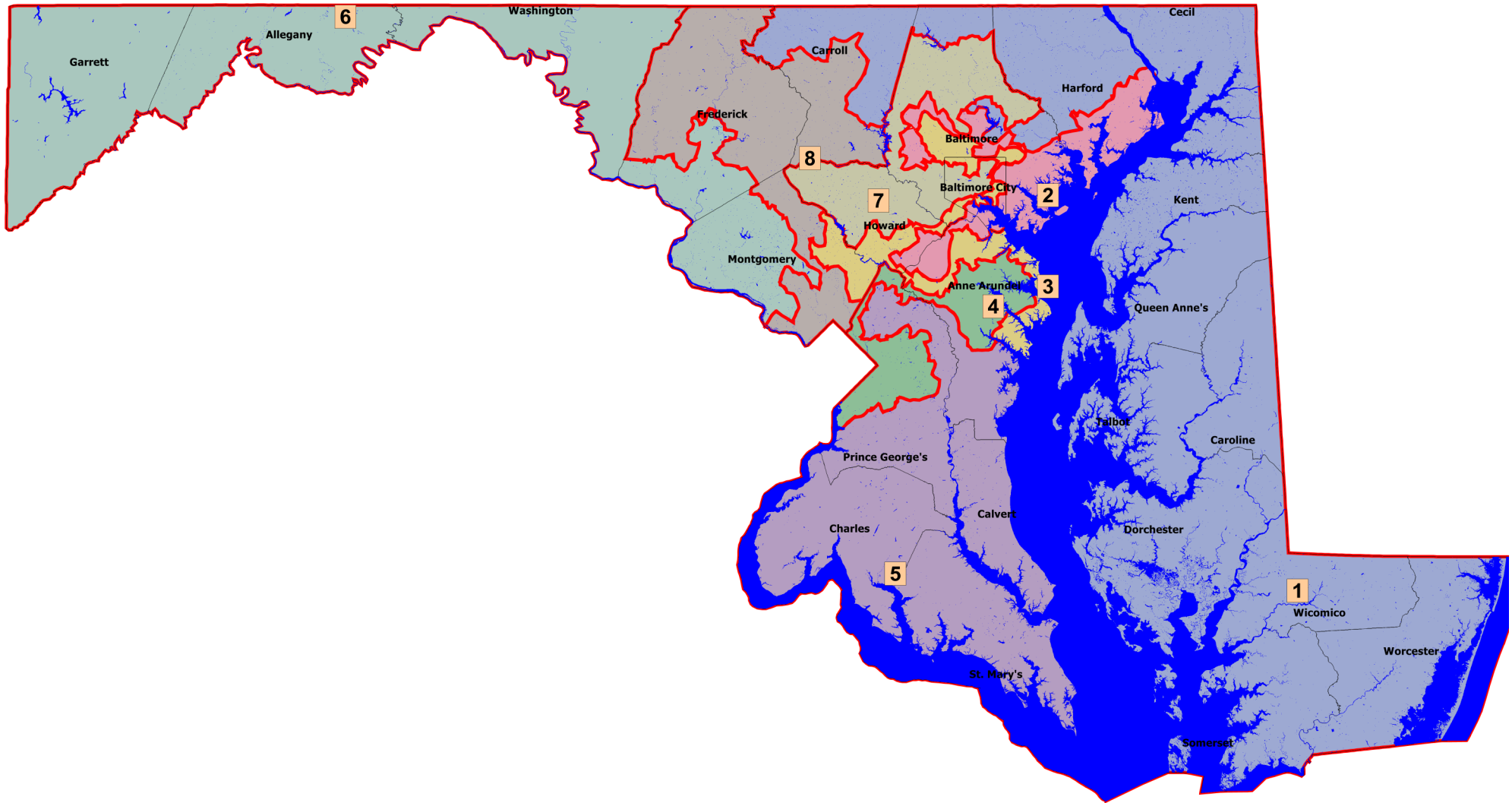
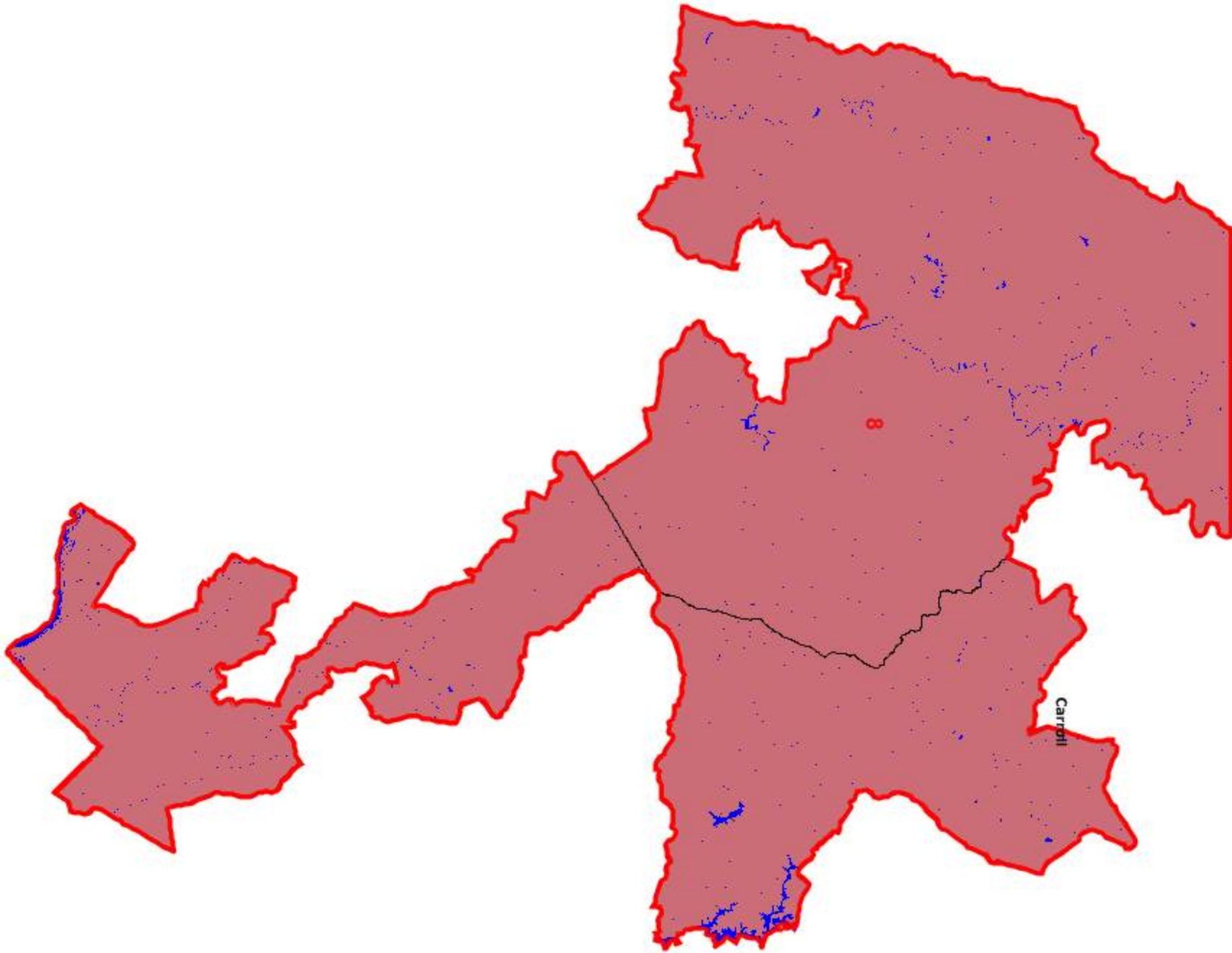


Attachment B

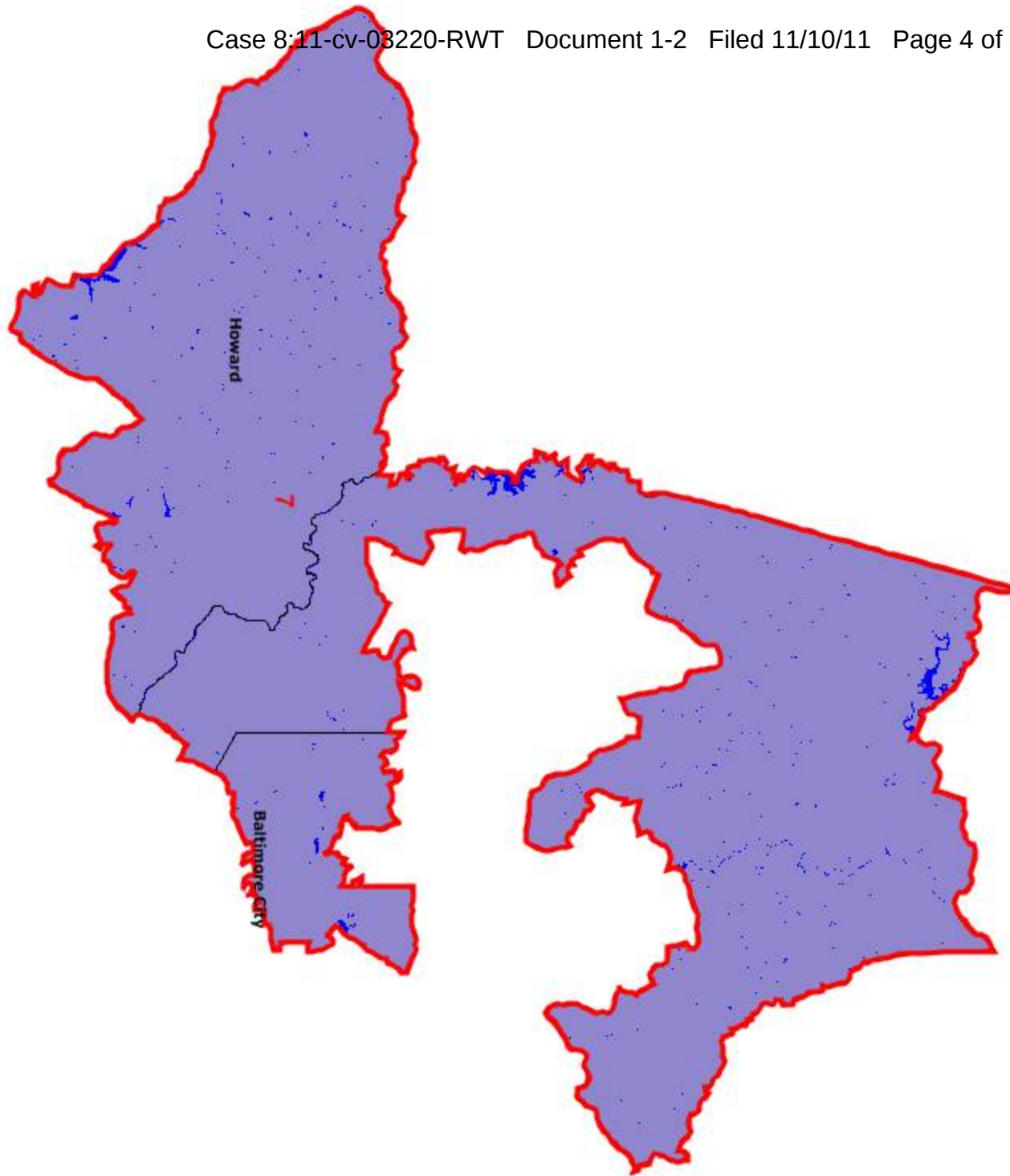
GRAC Congressional Proposal



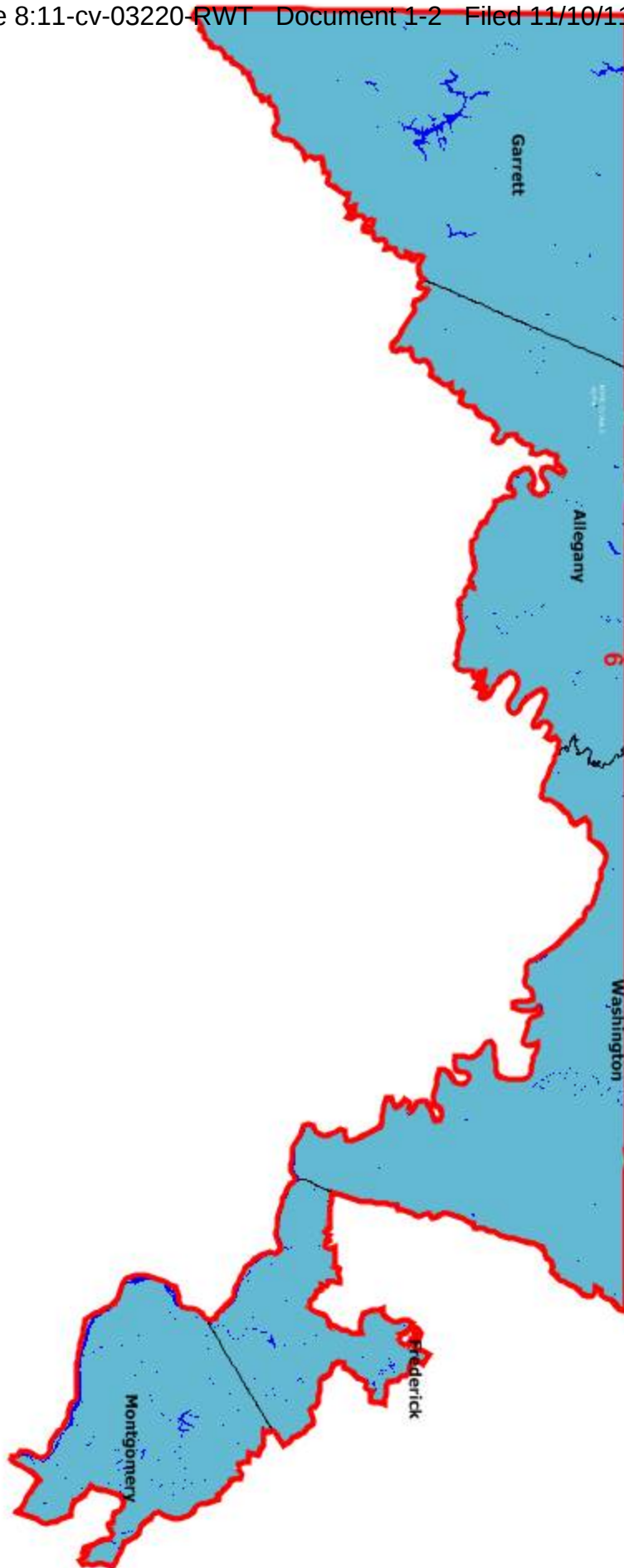


District: 8

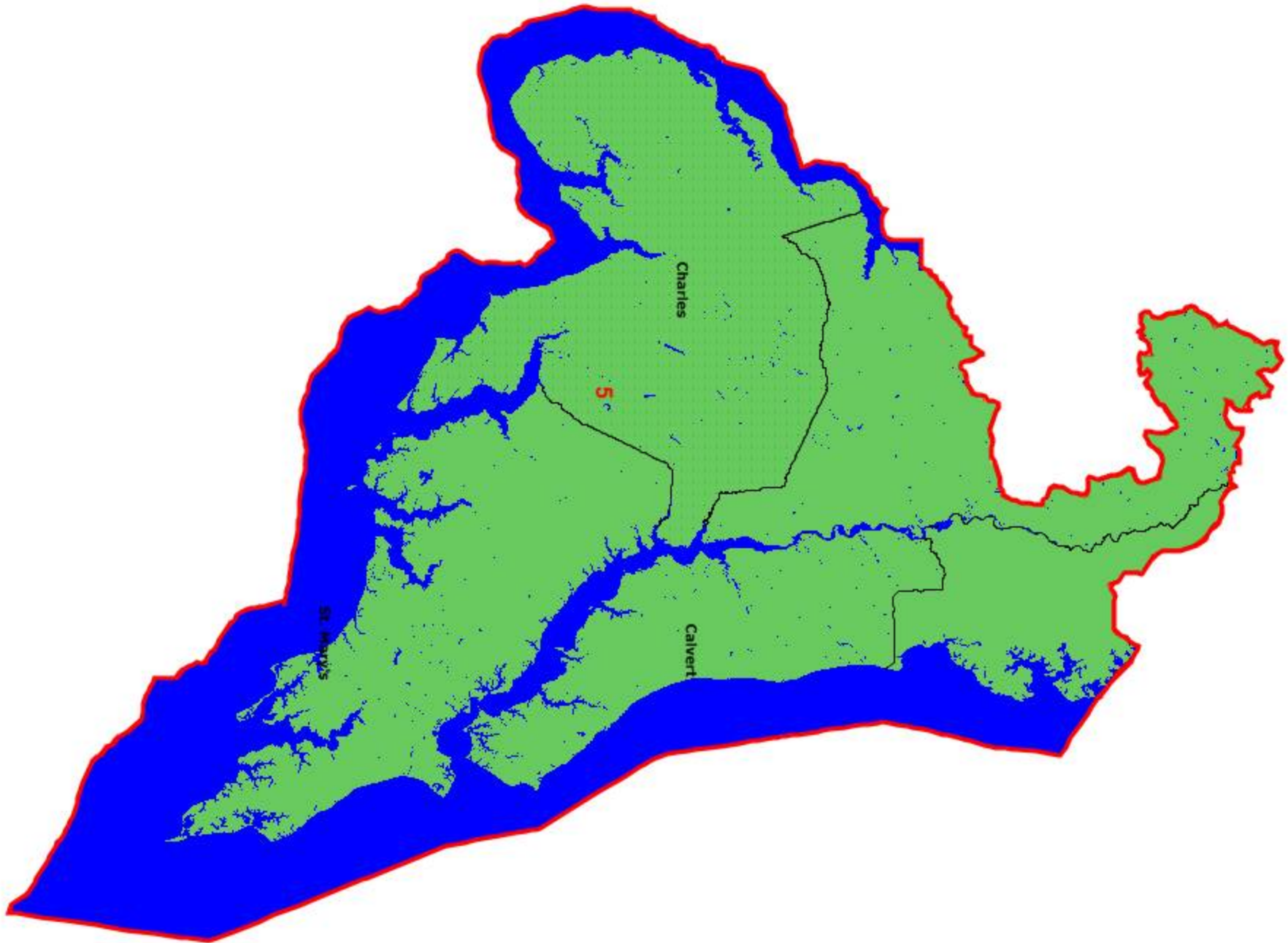
Carroll



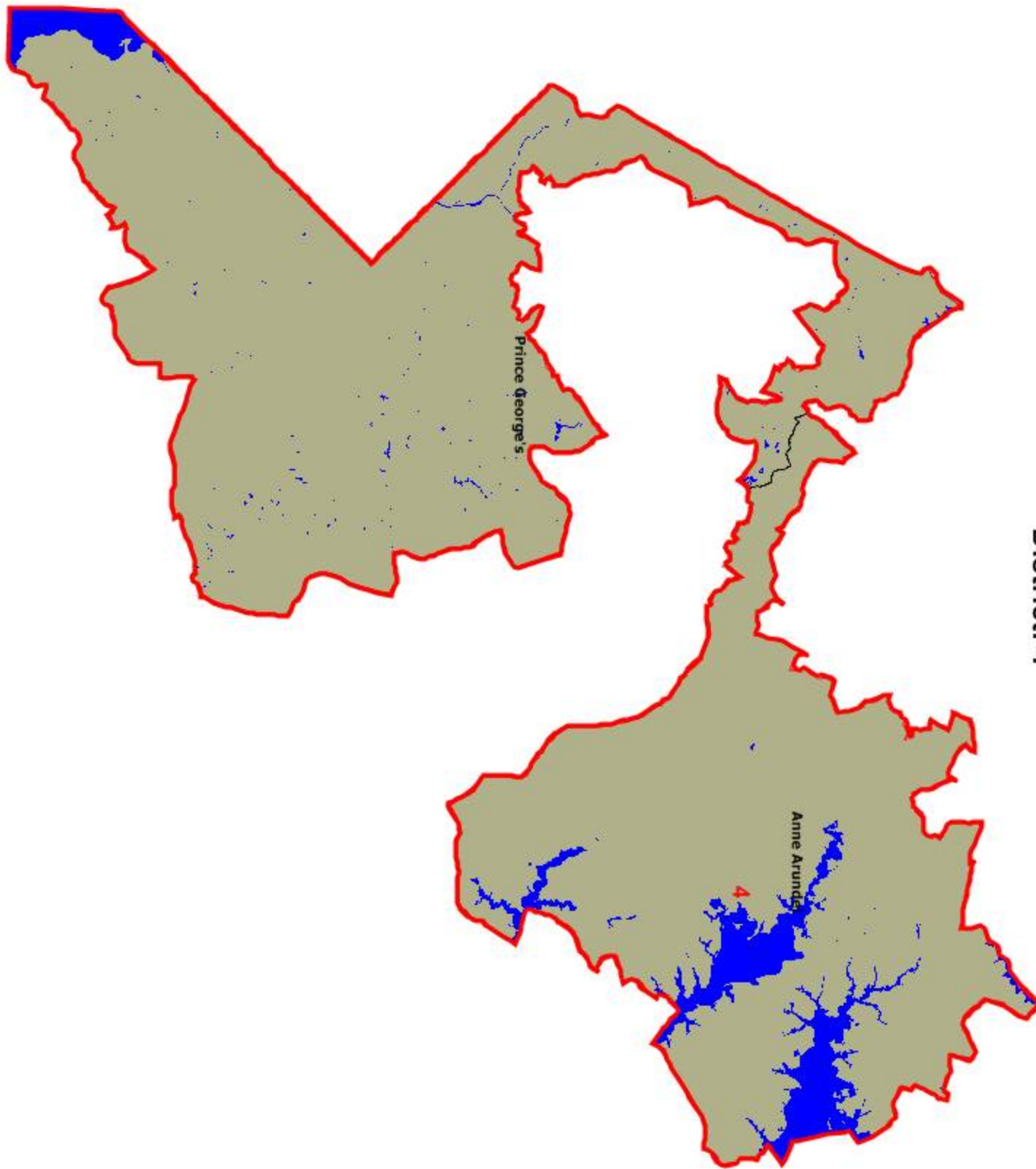
District: 7



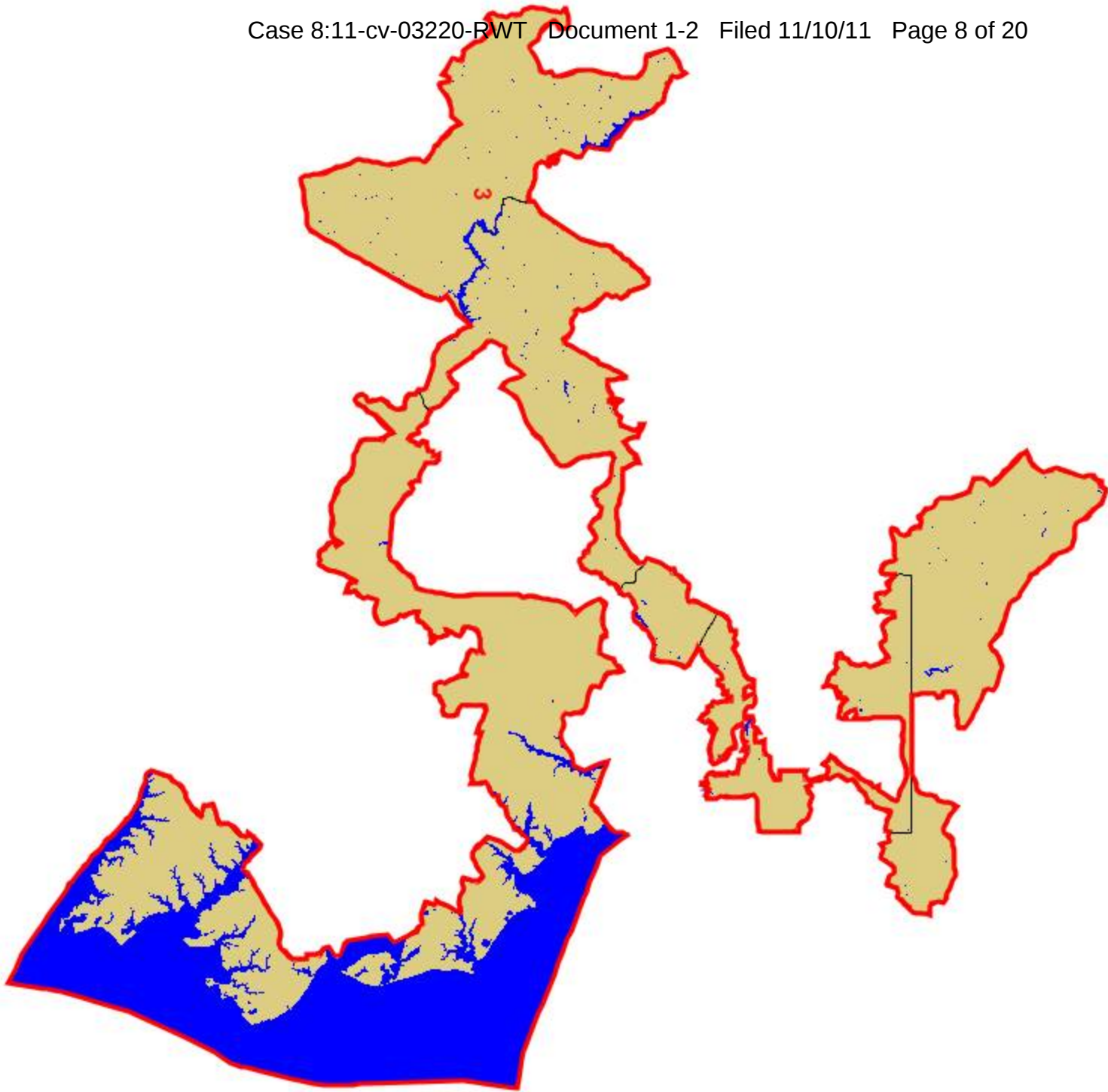
District: 6



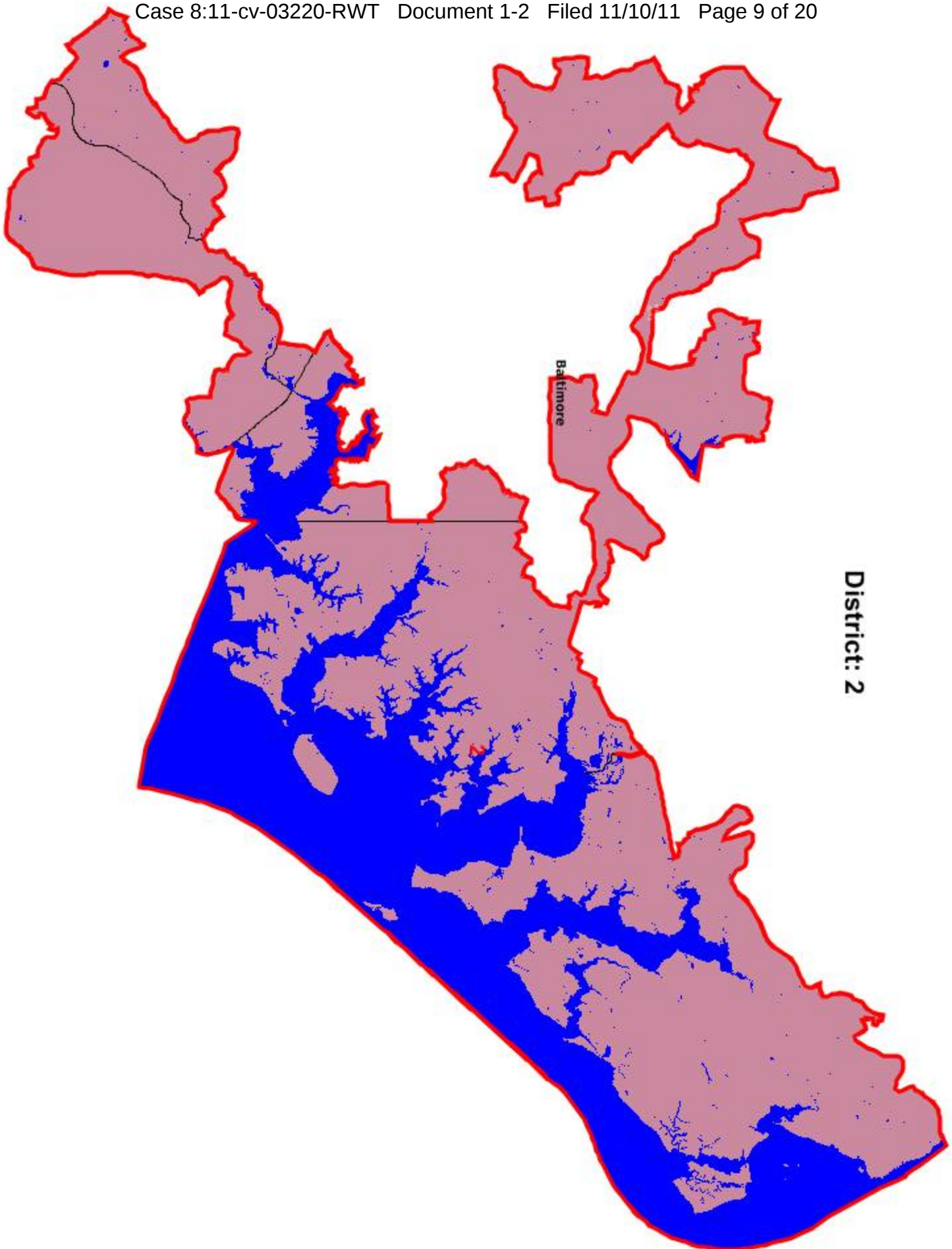
District: 5



District: 4

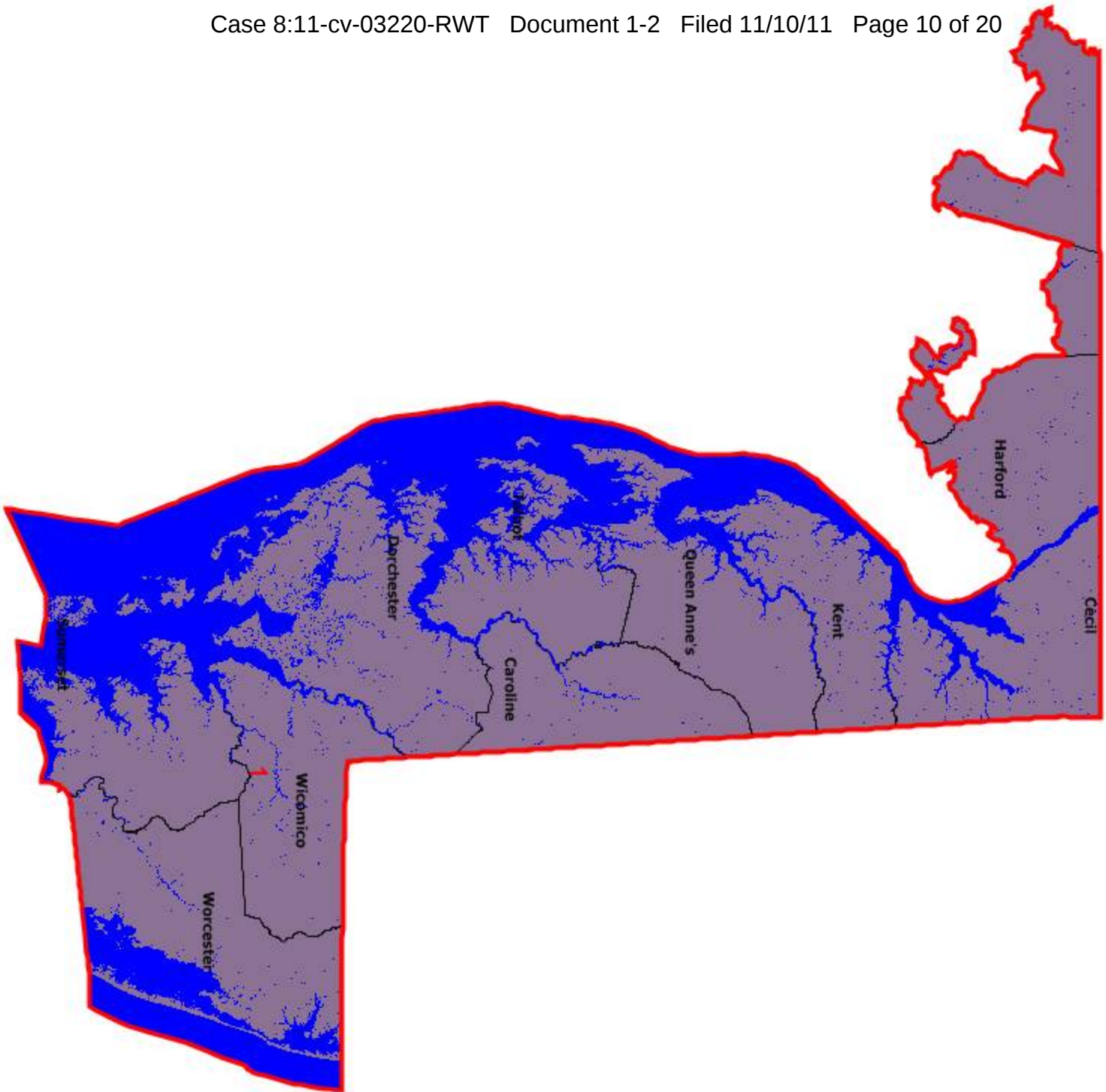


District: 3



District: 2

District: 1



Measures of Compactness

11/1/2011

Sum	N/A	N/A	N/A
Min	0.20	0.13	0.10
Max	0.77	0.65	0.43
Mean	0.49	0.35	0.22
Std. Dev.	0.19	0.15	0.10

DISTRICT	Population Polygon	Population Circle	Ehrenburg
1	0.20	0.13	0.23
2	0.36	0.31	0.25
3	0.32	0.23	0.10
4	0.63	0.37	0.21
5	0.60	0.38	0.43
6	0.77	0.65	0.19
7	0.53	0.38	0.15
8	0.52	0.34	0.21

Measures of Compactness

11/1/2011

Sum	N/A	N/A	3,015.24	N/A
Min	0.14	1.69	N/A	0.03
Max	0.36	4.95	N/A	0.31
Mean	0.27	3.09	N/A	0.12
Std. Dev.	0.07	0.94	N/A	0.09

DISTRICT	Reock	Schwartzberg	Perimeter	Polsby-Popper
1	0.27	2.35	648.73	0.16
2	0.26	3.50	308.22	0.07
3	0.23	4.95	375.39	0.03
4	0.25	3.17	206.60	0.09
5	0.36	1.69	303.13	0.31
6	0.14	3.11	566.85	0.08
7	0.36	3.02	264.94	0.09
8	0.34	2.91	341.38	0.10

GRAC Adjusted Population

District	Hispanic Origin	% Hispanic Origin	Adj_White	% Adj_White	Adj_AP_Wht	% Adj_AP_Wht	Adj_Black	% Adj_Black	Adj_AP_Blk	% Adj_AP_Blk	Adj_AmIndian	% Adj_AmIndian	Adj_AP_Ind	% Adj_AP_Ind	Adj_Asian
1	23,789	3.29%	601,630	83.38%	613,536	85.03%	82,220	11.40%	88,966	12.33%	1,734	0.24%	5,253	0.73%	13,417
2	39,604	5.47%	416,406	57.71%	433,976	60.15%	231,594	32.10%	244,961	33.95%	2,948	0.41%	8,477	1.17%	32,857
3	55,597	7.72%	474,707	65.79%	491,780	68.16%	151,458	20.99%	161,487	22.38%	2,354	0.33%	7,067	0.98%	47,658
4	98,116	13.63%	225,460	31.25%	239,739	33.23%	394,285	54.65%	405,916	56.26%	3,372	0.47%	8,810	1.22%	22,110
5	52,126	7.23%	375,798	52.08%	393,273	54.51%	266,813	36.98%	280,332	38.85%	3,262	0.45%	9,686	1.34%	27,603
6	81,376	11.17%	501,793	69.55%	522,374	72.40%	86,881	12.04%	97,364	13.49%	2,193	0.30%	6,234	0.86%	74,924
7	22,508	3.14%	252,206	34.95%	263,670	36.54%	401,552	55.65%	411,205	56.99%	2,044	0.28%	6,526	0.90%	41,352
8	97,516	13.52%	510,916	70.81%	530,171	73.48%	84,556	11.72%	92,729	12.85%	2,512	0.35%	6,603	0.92%	58,927

GRAC Adjusted Population

District	% Adj_Asian	Adj_AP_Asn	% Adj_AP_Asn	Adj_Hawaiian	% Adj_Hawaiian	Adj_AP_Hwn	% Adj_AP_Hwn	Adj_Other	% Adj_Other	Adj_AP_Oth	% Adj_AP_Oth
1	1.86%	16,727	2.32%	300	0.04%	759	0.11%	8,893	1.23%	10,660	1.48%
2	4.55%	38,814	5.38%	460	0.06%	1,418	0.20%	14,964	2.07%	18,443	2.56%
3	6.61%	54,946	7.62%	531	0.07%	1,405	0.19%	23,637	3.28%	28,018	3.88%
4	3.06%	26,782	3.71%	478	0.07%	1,513	0.21%	54,934	7.61%	62,136	8.61%
5	3.83%	34,227	4.74%	429	0.06%	1,307	0.18%	24,677	3.42%	28,488	3.95%
6	10.38%	83,454	11.57%	346	0.05%	1,163	0.16%	30,956	4.29%	37,169	5.15%
7	5.73%	46,929	6.50%	254	0.04%	939	0.13%	7,949	1.10%	10,415	1.44%
8	8.17%	68,160	9.45%	359	0.05%	1,322	0.18%	40,814	5.66%	48,046	6.66%

GRAC Adjusted VAP

District	Adj_18+_Wht	% Adj_18+_Wht	Adj_18+_AP_Wht	% Adj_18+_AP_Wht	Adj_18+_Blk	% Adj_18+_Blk	Adj_18+_AP_Blak	% Adj_18+_AP_Blak	Adj_18+_Ind	% Adj_18+_Ind	Adj_18+_AP_Ind	% Adj_18+_AP_Ind	Adj_18+_Asn	% Adj_18+_Asn	Adj_18+_AP_Asn
1	472,663	84.86%	477,608	85.75%	61,080	10.97%	63,167	11.34%	1,338	0.24%	3,799	0.68%	9,812	1.76%	11,382
2	339,466	61.59%	347,102	62.97%	163,221	29.61%	168,497	30.57%	2,198	0.40%	5,864	1.06%	25,040	4.54%	28,177
3	388,333	68.72%	396,897	70.24%	109,638	19.40%	114,044	20.18%	1,757	0.31%	5,069	0.90%	36,969	6.54%	40,936
4	175,797	32.32%	184,164	33.85%	296,483	54.50%	303,245	55.74%	2,492	0.46%	6,452	1.19%	17,664	3.25%	20,225
5	297,167	54.43%	305,592	55.97%	195,358	35.78%	201,408	36.89%	2,439	0.45%	6,770	1.24%	22,379	4.10%	25,825
6	392,148	71.99%	401,598	73.72%	61,138	11.22%	64,907	11.92%	1,587	0.29%	4,322	0.79%	56,288	10.33%	60,520
7	204,503	36.70%	210,470	37.77%	303,798	54.51%	309,185	55.48%	1,598	0.29%	4,880	0.88%	32,085	5.76%	35,196
8	398,753	71.98%	408,836	73.80%	64,397	11.62%	68,429	12.35%	1,828	0.33%	4,720	0.85%	46,772	8.44%	51,321

GRAC Adjusted VAP

District	% Adj_18+_AP_Asn	Adj_18+_Hwn	% Adj_18+_Hwn	Adj_18+_AP_Hwn	% Adj_18+_AP_Hwn	Adj_18+_Oth	% Adj_18+_Oth	Adj_18+_AP_Oth	% Adj_18+_AP_Oth
1	2.04%	227	0.04%	500	0.09%	5,993	1.08%	6,950	1.25%
2	5.11%	354	0.06%	966	0.18%	10,334	1.87%	12,364	2.24%
3	7.24%	423	0.07%	1,023	0.18%	16,674	2.95%	19,483	3.45%
4	3.72%	384	0.07%	1,126	0.21%	38,282	7.04%	43,260	7.95%
5	4.73%	348	0.06%	866	0.16%	16,498	3.02%	18,795	3.44%
6	11.11%	263	0.05%	804	0.15%	21,473	3.94%	25,330	4.65%
7	6.32%	204	0.04%	685	0.12%	5,751	1.03%	7,427	1.33%
8	9.26%	288	0.05%	1,005	0.18%	28,961	5.23%	33,913	6.12%

GRAC Non Adjusted Population

District	Deviation	% Deviation	White	% White	AP_Wht	% AP_Wht	Black	% Black	AP_BlK	% AP_BlK	AmIndian	% AmIndian	AP_Ind	% AP_Ind	Asian
1	967	0.13%	601,609	83.25%	613,515	84.90%	83,374	11.54%	90,120	12.47%	1,733	0.24%	5,252	0.73%	13,417
2	1,750	0.24%	416,561	57.58%	434,131	60.01%	233,333	32.25%	246,700	34.10%	2,949	0.41%	8,478	1.17%	32,864
3	-1,615	-0.22%	474,091	65.84%	491,164	68.21%	150,634	20.92%	160,663	22.31%	2,354	0.33%	7,067	0.98%	47,652
4	-1,626	-0.23%	225,244	31.28%	239,523	33.26%	393,053	54.59%	404,684	56.20%	3,371	0.47%	8,809	1.22%	22,109
5	-1,222	-0.17%	375,415	52.11%	392,890	54.53%	266,141	36.94%	279,660	38.82%	3,262	0.45%	9,686	1.34%	27,602
6	6,759	0.94%	503,352	69.10%	523,933	71.92%	92,218	12.66%	102,701	14.10%	2,196	0.30%	6,237	0.86%	74,932
7	-4,832	-0.67%	252,265	35.19%	263,729	36.79%	396,835	55.36%	406,488	56.70%	2,043	0.28%	6,525	0.91%	41,349
8	-181	-0.03%	510,747	70.79%	530,002	73.46%	84,710	11.74%	92,883	12.87%	2,512	0.35%	6,603	0.92%	58,928

GRAC Non Adjusted Population

District	% Asian	AP_Asn	% AP_Asn	Hawaiian	% Hawaiian	AP_Hwn	% AP_Hwn	Other	% Other	AP_Oth	% AP_Oth
1	1.86%	16,727	2.31%	300	0.04%	759	0.11%	8,893	1.23%	10,660	1.48%
2	4.54%	38,821	5.37%	460	0.06%	1,418	0.20%	14,977	2.07%	18,456	2.55%
3	6.62%	54,940	7.63%	531	0.07%	1,405	0.20%	23,634	3.28%	28,015	3.89%
4	3.07%	26,781	3.72%	478	0.07%	1,513	0.21%	54,923	7.63%	62,125	8.63%
5	3.83%	34,226	4.75%	429	0.06%	1,307	0.18%	24,676	3.42%	28,487	3.95%
6	10.29%	83,462	11.46%	346	0.05%	1,163	0.16%	30,973	4.25%	37,186	5.10%
7	5.77%	46,926	6.55%	254	0.04%	939	0.13%	7,944	1.11%	10,410	1.45%
8	8.17%	68,161	9.45%	359	0.05%	1,322	0.18%	40,812	5.66%	48,044	6.66%

GRAC Non Adjusted VAP

District	H18+_Pop	% H18+_Pop	18+_Wht	% 18+_Wht	18+_AP_Wht	% 18+_AP_Wht	18+_Blk	% 18+_Blk	18+_AP_Blak	% 18+_AP_Blak	18+_Ind	% 18+_Ind	18+_AP_Ind	% 18+_AP_Ind	18+_Asn
1	15,366	2.75%	472,642	84.68%	477,587	85.57%	62,234	11.15%	64,321	11.52%	1,337	0.24%	3,798	0.68%	9,812
2	26,160	4.73%	339,621	61.40%	347,257	62.78%	164,960	29.82%	170,236	30.78%	2,199	0.40%	5,865	1.06%	25,047
3	38,401	6.81%	387,717	68.79%	396,281	70.31%	108,814	19.31%	113,220	20.09%	1,757	0.31%	5,069	0.90%	36,963
4	67,800	12.50%	175,581	32.36%	183,948	33.90%	295,251	54.42%	302,013	55.67%	2,491	0.46%	6,451	1.19%	17,663
5	34,345	6.30%	296,784	54.47%	305,209	56.01%	194,686	35.73%	200,736	36.84%	2,439	0.45%	6,770	1.24%	22,378
6	55,423	10.05%	393,707	71.37%	403,157	73.08%	66,475	12.05%	70,244	12.73%	1,590	0.29%	4,325	0.78%	56,296
7	15,898	2.88%	204,562	37.02%	210,529	38.10%	299,081	54.12%	304,468	55.10%	1,597	0.29%	4,879	0.88%	32,082
8	68,915	12.44%	398,584	71.95%	408,667	73.77%	64,551	11.65%	68,583	12.38%	1,828	0.33%	4,720	0.85%	46,773

GRAC Non Adjusted VAP

District	% 18+_Asn	18+_AP_Asn	% 18+_AP_Asn	18+_Hwn	% 18+_Hwn	18+_AP_Hwn	% 18+_AP_Hwn	18+_Oth	% 18+_Oth	18+_AP_Oth	% 18+_AP_Oth
1	1.76%	11,382	2.04%	227	0.04%	500	0.09%	5,993	1.07%	6,950	1.25%
2	4.53%	28,184	5.10%	354	0.06%	966	0.17%	10,347	1.87%	12,377	2.24%
3	6.56%	40,930	7.26%	423	0.08%	1,023	0.18%	16,671	2.96%	19,480	3.46%
4	3.26%	20,224	3.73%	384	0.07%	1,126	0.21%	38,271	7.05%	43,249	7.97%
5	4.11%	25,824	4.74%	348	0.06%	866	0.16%	16,497	3.03%	18,794	3.45%
6	10.20%	60,528	10.97%	263	0.05%	804	0.15%	21,490	3.90%	25,347	4.59%
7	5.81%	35,193	6.37%	204	0.04%	685	0.12%	5,746	1.04%	7,422	1.34%
8	8.44%	51,322	9.26%	288	0.05%	1,005	0.18%	28,959	5.23%	33,911	6.12%