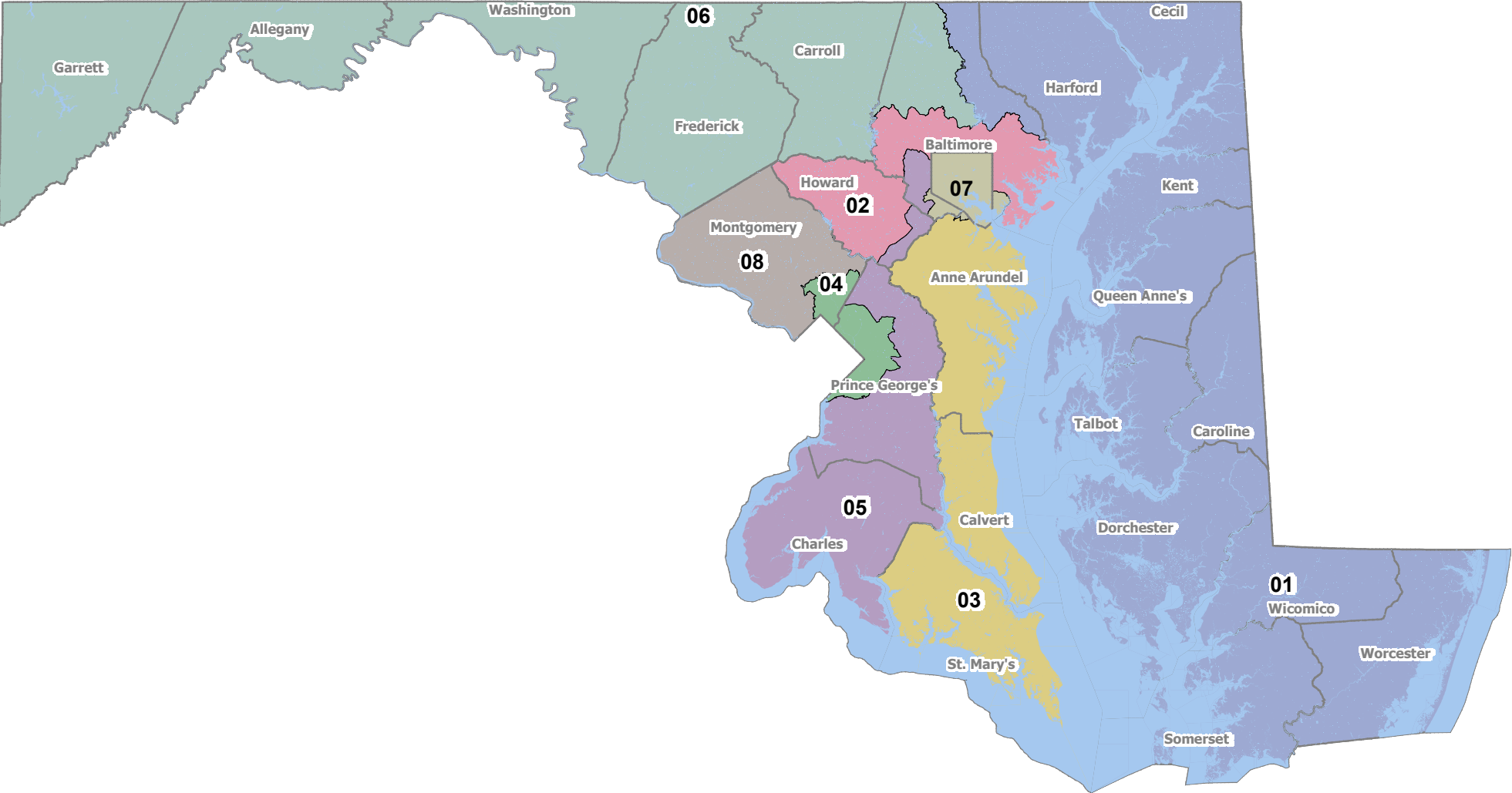


ATTACHMENT G



FLH (Zeroed to Census) Population

District	Hispanic Origin	% Hispanic Origin	White	% White	AP_Wht	% AP_Wht	Black	% Black	AP_BlK	% AP_BlK	AmIndian	% AmIndian	AP_Ind	% AP_Ind	Asian
01	26869	3.72%	577,249	79.99%	590,809	81.86%	104,561	14.49%	112,989	15.66%	1,910	0.26%	5,883	0.82%	12,209
02	33213	4.60%	481,159	66.67%	497,023	68.87%	146,662	20.32%	156,739	21.72%	2,193	0.30%	6,545	0.91%	59,907
03	38656	5.36%	553,069	76.63%	571,047	79.13%	108,922	15.09%	118,890	16.47%	2,371	0.33%	7,508	1.04%	21,926
04	157824	21.87%	184,244	25.53%	202,350	28.04%	378,260	52.41%	391,051	54.19%	4,181	0.58%	9,998	1.39%	40,499
05	47781	6.62%	230,863	31.99%	246,961	34.22%	405,325	56.16%	421,021	58.34%	2,901	0.40%	9,586	1.33%	37,504
06	30741	4.26%	622,662	86.28%	636,592	88.21%	51,744	7.17%	59,374	8.23%	1,670	0.23%	5,046	0.70%	19,022
07	30997	4.30%	260,470	36.09%	272,167	37.71%	410,152	56.83%	420,012	58.20%	2,868	0.40%	7,877	1.09%	18,406
08	104551	14.49%	449,568	62.29%	471,938	65.39%	94,672	13.12%	103,823	14.39%	2,326	0.32%	6,214	0.86%	109,380

FLH (Zeroed to Census) Population

District	% Asian	AP_Asn	% AP_Asn	Hawaiian	% Hawaiian	AP_Hwn	% AP_Hwn	Other	% Other	AP_Oth	% AP_Oth
01	1.69%	15,858	2.20%	421	0.06%	1,000	0.14%	9,873	1.37%	11,899	1.65%
02	8.30%	67,212	9.31%	286	0.04%	972	0.13%	11,695	1.62%	14,950	2.07%
03	3.04%	28,882	4.00%	596	0.08%	1,575	0.22%	13,937	1.93%	16,678	2.31%
04	5.61%	46,626	6.46%	526	0.07%	1,813	0.25%	87,850	12.17%	98,884	13.70%
05	5.20%	44,104	6.11%	375	0.05%	1,337	0.19%	21,220	2.94%	25,539	3.54%
06	2.64%	23,409	3.24%	280	0.04%	787	0.11%	10,799	1.50%	13,080	1.81%
07	2.55%	22,327	3.09%	329	0.05%	1,047	0.15%	13,394	1.86%	16,156	2.24%
08	15.16%	121,626	16.85%	344	0.05%	1,295	0.18%	38,064	5.27%	46,197	6.40%

FLH (Zeroed to Census) Non Adjusted VAP

District	H18+_Pop	% H18+_Pop	18+_Wht	% 18+_Wht	18+_AP_Wht	% 18+_AP_Wht	18+_Blk	% 18+_Blk	18+_AP_Blk	% 18+_AP_Blk	18+_Ind	% 18+_Ind	18+_AP_Ind	% 18+_AP_Ind	18+_Asn
01	17,307	3.11%	455,059	81.85%	460,621	82.85%	76,660	13.79%	79,310	14.26%	1,479	0.27%	4,243	0.76%	9,064
02	22,331	4.02%	387,628	69.74%	394,780	71.03%	104,335	18.77%	108,655	19.55%	1,609	0.29%	4,568	0.82%	44,172
03	25,453	4.64%	429,954	78.43%	437,859	79.87%	79,697	14.54%	83,236	15.18%	1,785	0.33%	5,182	0.95%	17,014
04	109,976	19.97%	151,002	27.42%	162,452	29.50%	284,795	51.72%	292,561	53.13%	3,013	0.55%	7,319	1.33%	33,384
05	31,895	5.84%	188,074	34.44%	196,101	35.91%	298,808	54.72%	306,696	56.16%	2,222	0.41%	6,830	1.25%	29,408
06	19,925	3.61%	484,587	87.69%	490,335	88.73%	38,697	7.00%	41,025	7.42%	1,276	0.23%	3,542	0.64%	13,848
07	22,292	3.94%	221,975	39.26%	228,312	40.38%	305,715	54.07%	310,891	54.99%	2,211	0.39%	5,863	1.04%	15,986
08	73,129	13.40%	350,919	64.30%	362,175	66.36%	67,345	12.34%	71,447	13.09%	1,643	0.30%	4,330	0.79%	84,138

District	% 18+_Asn	18+_AP_Asn	% 18+_AP_Asn	18+_Hwn	% 18+_Hwn	18+_AP_Hwn	% 18+_AP_Hwn	18+_Oth	% 18+_Oth	18+_AP_Oth	% 18+_AP_Oth
01	1.63%	10,816	1.95%	311	0.06%	646	0.12%	6,660	1.20%	7,753	1.39%
02	7.95%	47,733	8.59%	226	0.04%	701	0.13%	8,129	1.46%	10,190	1.83%
03	3.10%	20,361	3.71%	461	0.08%	1,034	0.19%	9,666	1.76%	11,181	2.04%
04	6.06%	37,103	6.74%	428	0.08%	1,392	0.25%	60,985	11.07%	68,787	12.49%
05	5.39%	32,937	6.03%	309	0.06%	925	0.17%	14,536	2.66%	17,191	3.15%
06	2.51%	15,858	2.87%	205	0.04%	529	0.10%	7,298	1.32%	8,563	1.55%
07	2.83%	18,570	3.28%	272	0.05%	789	0.14%	9,759	1.73%	11,576	2.05%
08	15.42%	90,209	16.53%	279	0.05%	959	0.18%	26,941	4.94%	32,289	5.92%

FLH Map - Deviations from Census's Ideal Populations (Non-adjusted)

District	Population	Deviation	% Deviation
01	721,694	0.00%	0
02	721,694	0.00%	0
03	721,694	0.00%	0
04	721,694	0.00%	0
05	721,694	0.00%	0
06	721,694	0.00%	0
07	721,694	0.00%	0
08	721,694	0.00%	0

FLH (Zeroed to Census) Population

District	Population	Deviation	% Deviation	Hispanic Origin	% Hispanic Origin	White	% White	AP_Wht	% AP_Wht	Black	% Black	AP_BlK	% AP_BlK	AmIndian	% AmIndian	AP_Ind
01	721,694	0	0.00%	26,869	3.72%	577,249	79.99%	590,809	81.86%	104,561	14.49%	112,989	15.66%	1,910	0.26%	5,883
02	721,694	0	0.00%	33,213	4.60%	481,159	66.67%	497,023	68.87%	146,662	20.32%	156,739	21.72%	2,193	0.30%	6,545
03	721,694	0	0.00%	38,656	5.36%	553,069	76.63%	571,047	79.13%	108,922	15.09%	118,890	16.47%	2,371	0.33%	7,508
04	721,694	0	0.00%	157,824	21.87%	184,244	25.53%	202,350	28.04%	378,260	52.41%	391,051	54.19%	4,181	0.58%	9,998
05	721,694	0	0.00%	47,781	6.62%	230,863	31.99%	246,961	34.22%	405,325	56.16%	421,021	58.34%	2,901	0.40%	9,586
06	721,694	0	0.00%	30,741	4.26%	622,662	86.28%	636,592	88.21%	51,744	7.17%	59,374	8.23%	1,670	0.23%	5,046
07	721,694	0	0.00%	30,997	4.30%	260,470	36.09%	272,167	37.71%	410,152	56.83%	420,012	58.20%	2,868	0.40%	7,877
08	721,694	0	0.00%	104,551	14.49%	449,568	62.29%	471,938	65.39%	94,672	13.12%	103,823	14.39%	2,326	0.32%	6,214

FLH (Zeroed to Census) Population

District	% AP_Ind	Asian	% Asian	AP_Asn	% AP_Asn	Hawaiian	% Hawaiian	AP_Hwn	% AP_Hwn	Other	% Other	AP_Oth	% AP_Oth
01	0.82%	12,209	1.69%	15,858	2.20%	421	0.06%	1,000	0.14%	9,873	1.37%	11,899	1.65%
02	0.91%	59,907	8.30%	67,212	9.31%	286	0.04%	972	0.13%	11,695	1.62%	14,950	2.07%
03	1.04%	21,926	3.04%	28,882	4.00%	596	0.08%	1,575	0.22%	13,937	1.93%	16,678	2.31%
04	1.39%	40,499	5.61%	46,626	6.46%	526	0.07%	1,813	0.25%	87,850	12.17%	98,884	13.70%
05	1.33%	37,504	5.20%	44,104	6.11%	375	0.05%	1,337	0.19%	21,220	2.94%	25,539	3.54%
06	0.70%	19,022	2.64%	23,409	3.24%	280	0.04%	787	0.11%	10,799	1.50%	13,080	1.81%
07	1.09%	18,406	2.55%	22,327	3.09%	329	0.05%	1,047	0.15%	13,394	1.86%	16,156	2.24%
08	0.86%	109,380	15.16%	121,626	16.85%	344	0.05%	1,295	0.18%	38,064	5.27%	46,197	6.40%